



Abbey Mansion Mews SE24  
£975,000

0208 702 9555  
[pedderproperty.com](https://pedderproperty.com)

**pedder**



# In general

- Architecturally designed end terrace home
- Three bedrooms
- Two bathrooms
- Gated development
- Oak flooring throughout
- Off street car park
- Triple glazed windows throughout
- Underfloor heating throughout
- Prime location
- Offered chain free

# In detail

We are delighted to offer to the market this modern architecturally designed three bedroom, two bathroom end terrace home situated within Abbey Mansions Mews, a gated development just off Milkwood Road in the very heart of Herne Hill.

The property is neutrally decorated throughout comprising 19ft triple aspect reception room with double doors to rear garden, entrance hall with built-in coats cupboard, cloakroom, and on the first floor two bedrooms and stylish family bathroom. On the lower ground floor is a further double bedroom with sliding patio doors to inner courtyard and having an en suite bathroom with Whirlpool suite.

The kitchen is fitted with a modern range of wall and base units, integrated oven/hob and slimline dishwasher, and sliding doors to another courtyard.

The property further benefits from underfloor heating and oak flooring throughout, an allocated off street car parking space, triple glazed windows affording excellent light throughout the house.

The property is set in the centre of Herne Hill, with the railway moments away (Victoria, Blackfriars & Thameslink) and the popular range of restaurant & shopping amenities, together with the vast expanse of Brockwell Park with its lido and café.

Early viewings of this fine home are highly recommended.

EPC: C | Council Tax Band: E



# Floorplan

## Abbey Mansion Mews, SE24

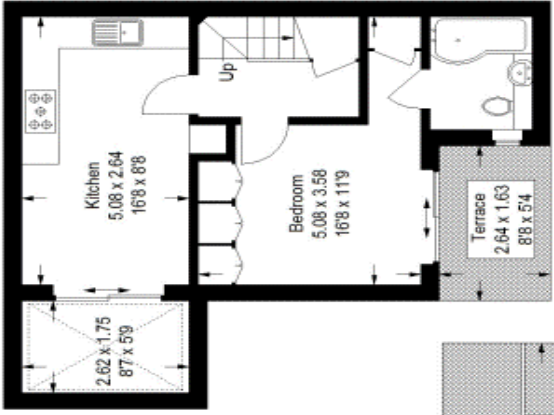
Approximate Gross Internal Area

Basement = 42.7 sq m / 460 sq ft

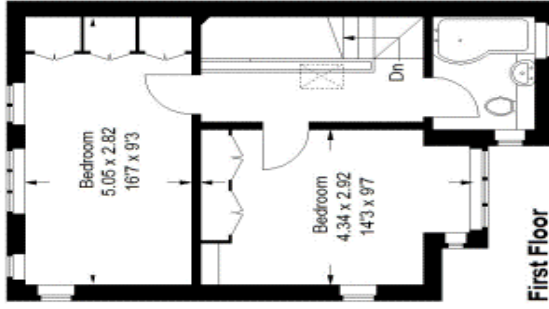
Ground Floor = 31.7 sq m / 341 sq ft

First Floor = 38.2 sq m / 411 sq ft

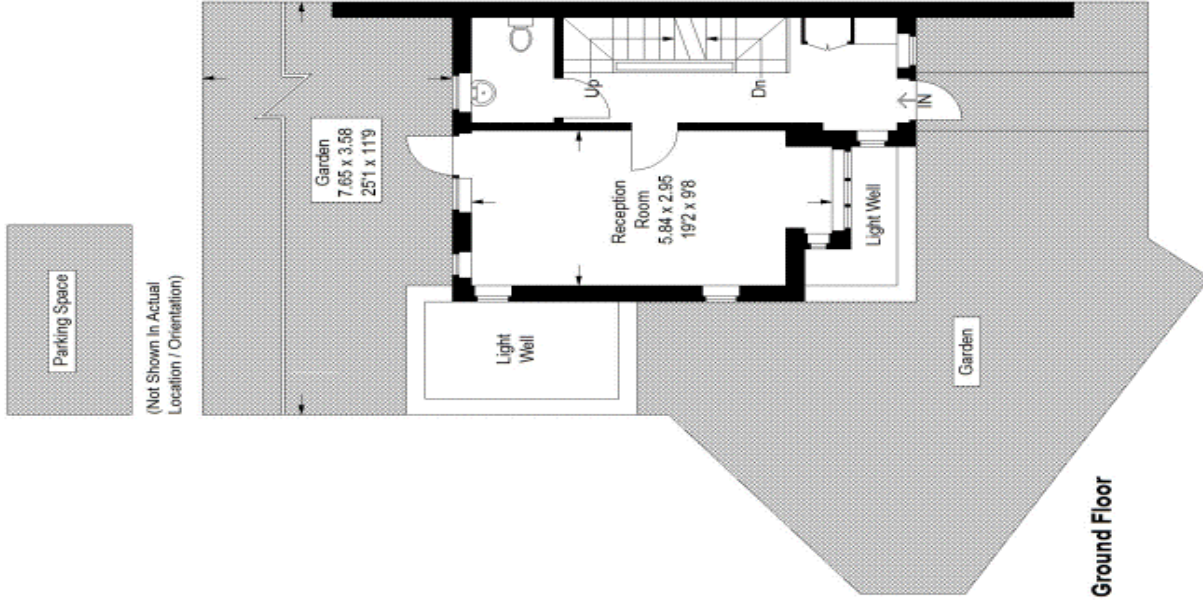
Total = 112.6 sq m / 1212 sq ft



Basement



First Floor



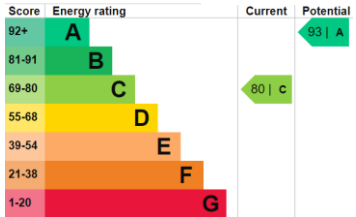
Ground Floor

Parking Space

(Not Shown In Actual Location / Orientation)

Copyright www.pedderproperty.com © 2020

These plans are for representation purposes only as defined by RICS - Code of Measuring Practice. Not drawn to Scale. Windows and door openings are approximate. Please check all dimensions, shapes and compass bearings before making any decisions reliant upon them.



Pedder Property Ltd trading as Pedder for themselves and for the vendor/landlord of this property whose agents they are, give notice that (1) these particulars do not constitute any part of an offer or contract, (2) all statements contained within these particulars are made without responsibility on the part of Pedder or the vendor/landlord, (3) whilst made in good faith, none of the statements contained within these particulars are to be relied upon as a statement of representation or fact, (4) any intending purchaser/tenant must satisfy him/herself by inspection or otherwise as to the correctness of each of the statements contained within these particulars, (5) the vendor/landlord does not make or give either Pedder or any person in their employment any authority to make or give representation or warranty whatsoever in relation to this property.