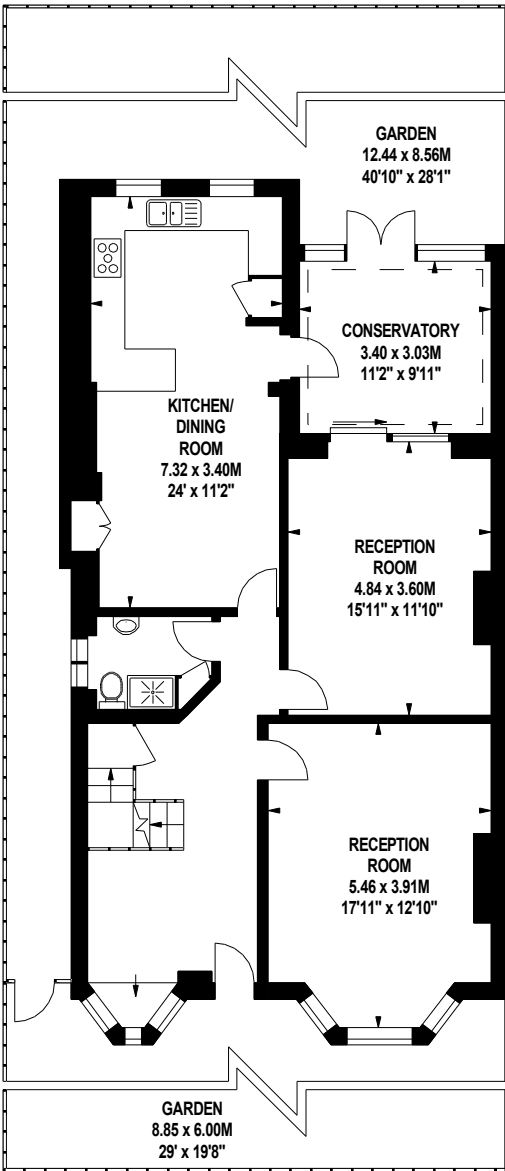


Dukes Avenue, W4

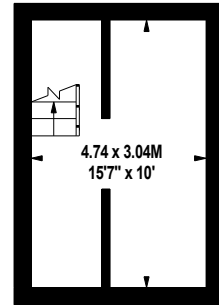
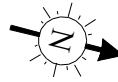
Approximate gross internal area

241.45 sq m / 2599 sq ft
(Including Eaves Storage)

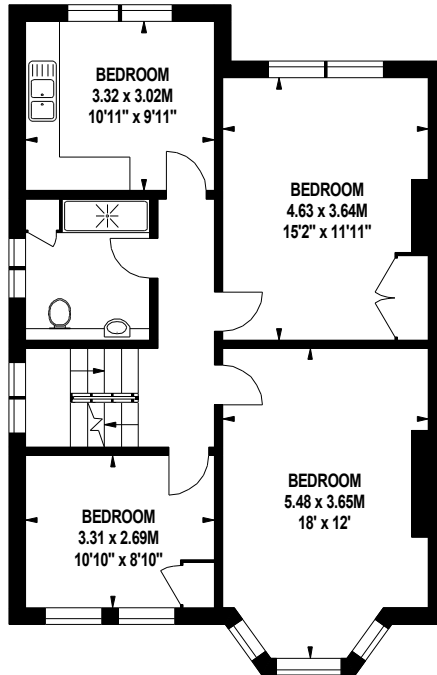
Eaves Storage
10.59 sq m / 114 sq ft



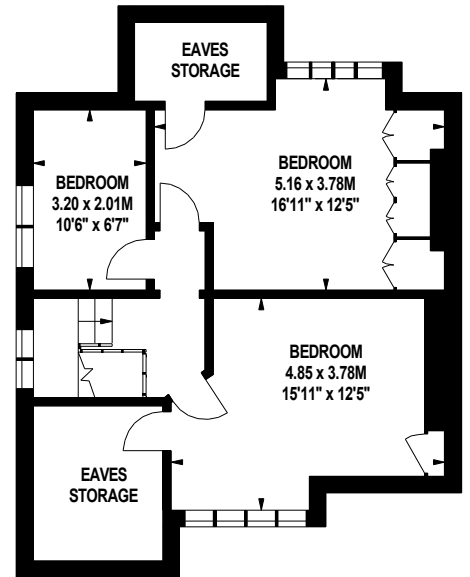
Ground Floor
1046 sq ft



Lower Ground Floor
159 sq ft



First Floor
779 sq ft



Second Floor
501 sq ft

The floor plan is not to scale and measurements and areas shown are approximate and therefore should be used for illustrative purposes only. The plan has been prepared in accordance with the RICS code of Measuring Practice and whilst we have confidence in the information produced, it must be not be relied on. If there is any aspect of particular importance, you should carry out or commission your own inspection of the property.
Copyright of FeaturePRO.