



St. Marys Grove, London, W4 3LN

Guide Price £3,500,000

**WHITMAN & CO.**

SALES · LETTINGS · COMMERCIAL



- Stunning double-fronted detached period house
- Large 68' x 38' garden and off street parking
- Six beds/four baths
- Architecturally designed by world renowned architect Scott Brownrigg
- 31' Kitchen/dining/family room
- Sought after road in Grove Park area of Chiswick

Tenure - Freehold  
Local Authority - Hounslow  
Council Tax - Band G

## THE PROPERTY

A stunning six-bedroom double-fronted detached period house offering over 3,500 sq ft of well-balanced living and entertaining space architecturally designed by world renowned architect Scott Brownrigg. The accommodation comprises two large reception rooms, 31' family room and kitchen, media room, fully fitted laundry room with large load capacity machines, basement, six bedrooms, four bathrooms plus cloakroom, large 68' x 38' garden, off-street parking, monitored security, cinematic facilities, bespoke built in furniture including fully fitted bespoke wardrobes to all bedrooms, fully integrated audio and video systems, underfloor heating, air conditioning, Rako lighting system, top of the range Hacker kitchen, Miele appliances and Hansgrohe fittings. St Mary's Grove is perfectly located within a short walk of the River, Chiswick House and Grounds and Chiswick High Road's extensive facilities whilst also being in the catchment of OFSTED rated 'outstanding' Grove Park and Strand on the Green schools. Transport links include Gunnersbury and Chiswick stations, local bus routes and the A4/M4 for routes in and out of London.

## SITUATION



### St. Marys Grove, W4

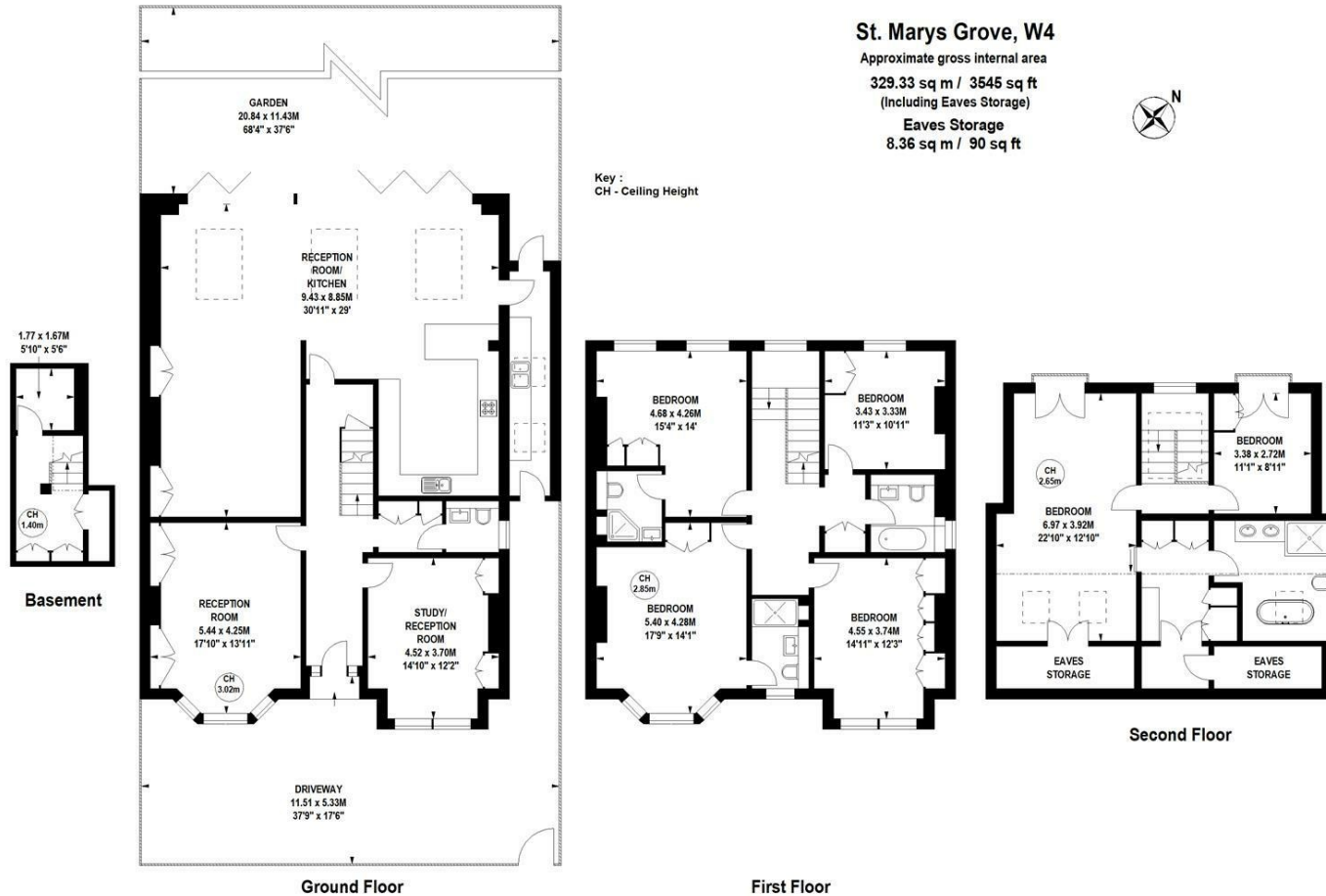
Approximate gross internal area

329.33 sq m / 3545 sq ft  
(Including Eaves Storage)

Eaves Storage  
8.36 sq m / 90 sq ft



Key :  
CH - Ceiling Height



Not to scale, for guidance only and must not be relied upon as a statement of fact.  
All measurements and areas are approximate only