



149 Upper Richmond Road, Putney, London, SW15 2TX

t: 0208 788 8822

e: putney@allanfuller.co.uk

www.allanfuller.co.uk

Lytton Grove London, SW15

A unique and well-proportioned property set on a quiet street in the heart of Putney.

The flat offers vast living and entertaining space, with lots of period features. The kitchen is extremely modern, with high quality appliances and gorgeous Corian counter tops. The double bedroom offers a wealth of storage. There is also a good sized bathroom, with a shower over the bath.

Located just a short walk from Putney High Street with East Putney tube station easily accessible via a footbridge from Lytton Grove, as well as the nearby green open spaces of Putney Heath, Wimbledon Common and Wandsworth Park. This superb property is one not to be missed and is offered for sale with a share of the freehold.

EPC - D Council Tax Band C



Asking Price £465,000
Leasehold - Share of Freehold

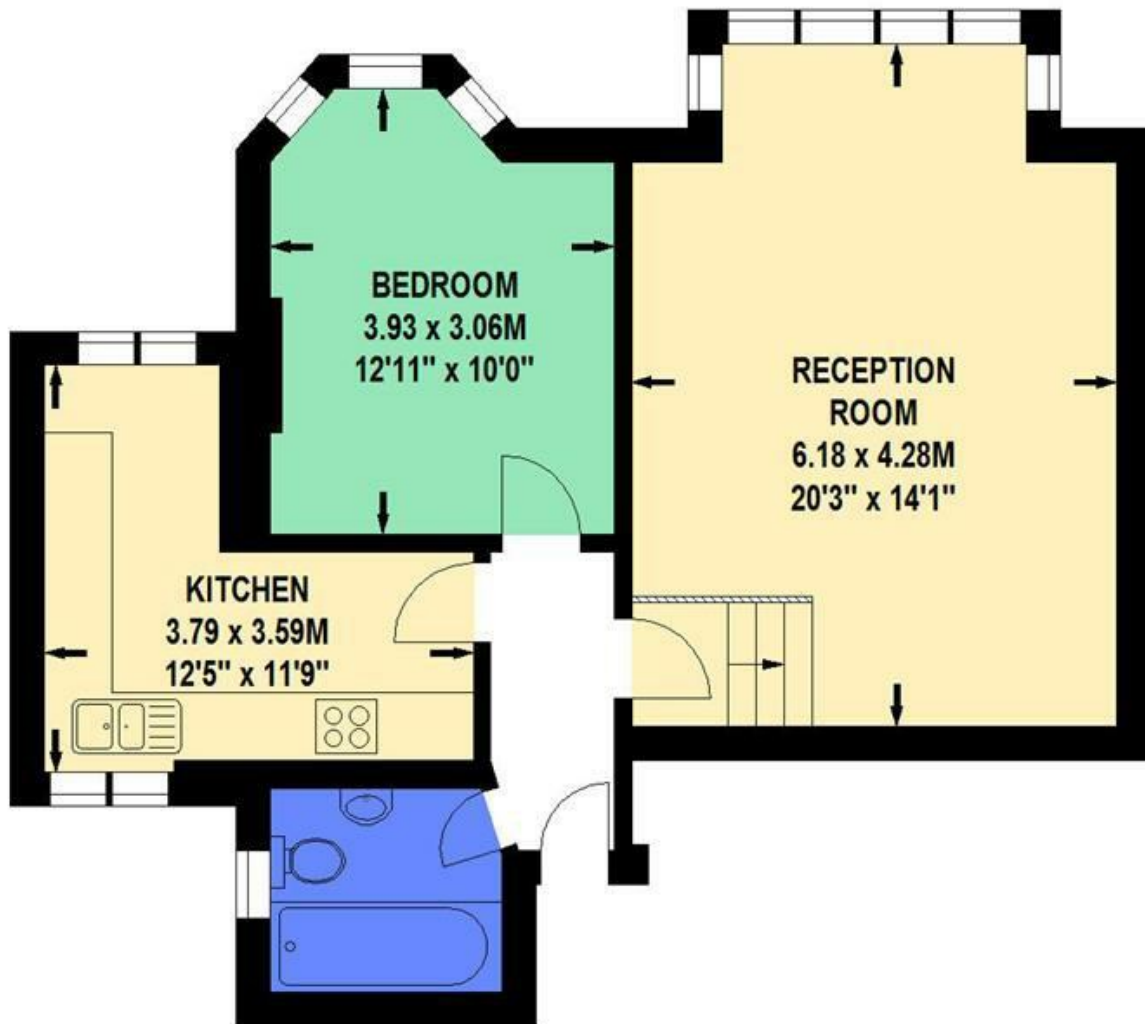
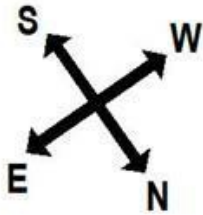




Lytton Grove, SW15

Approximate gross internal area

54 sq.m / 581 sq.ft



Ground Floor

Illustration for identification purposes only, not to scale

All measurements are maximum, and includes wardrobes and window bays where applicable

Prepared by Mays Floorplans © . Tel 020 8871 4668

With regards to any information supplied by us in relation to lease, ground rent and service charge it is essential that you have this information checked by your solicitor. We have transmitted information supplied to us by the vendor of the property but we have not been able to inspect the lease to check its accuracy. Please note that we have not tested any of the equipment or utilities at this property, nothing in these particulars shall be deemed a statement that the property is in good condition or otherwise nor that any of the services or facilities are in good working order. Measurements are approximate they were taken with a sonic tape, are as accurate as possible and usually measured from the widest point of any room. Description provided herein represents the opinion of the author, is given in good faith but should not be constructed as statements of fact. The particulars and photograph are for guidance only.