



149 Upper Richmond Road, Putney, London, SW15 2TX

t: 0208 788 8822

e: putney@allanfuller.co.uk

www.allanfuller.co.uk

Tildesley Road London, SW15

Delightful two double bedroom apartment offering spacious accommodation, charming reception room with laminate flooring with doors to its own private balcony overlooking the gardens, kitchen, bathroom and the benefit of a separate wc. This contemporary home is located on the first floor of this development with the benefit of a lift and off street parking.

Tildesley Road is quietly located next to Putney Heath, with its attractive open spaces. There are good bus links providing easy access to Putney town centre with its shops, bars, restaurants and excellent transport links of Putney Mainline Station.

Available furnished from the 2nd August - would suit sharers ideally

Sorry no pets !

No smokers!

Wandsworth Council Tax Band: B



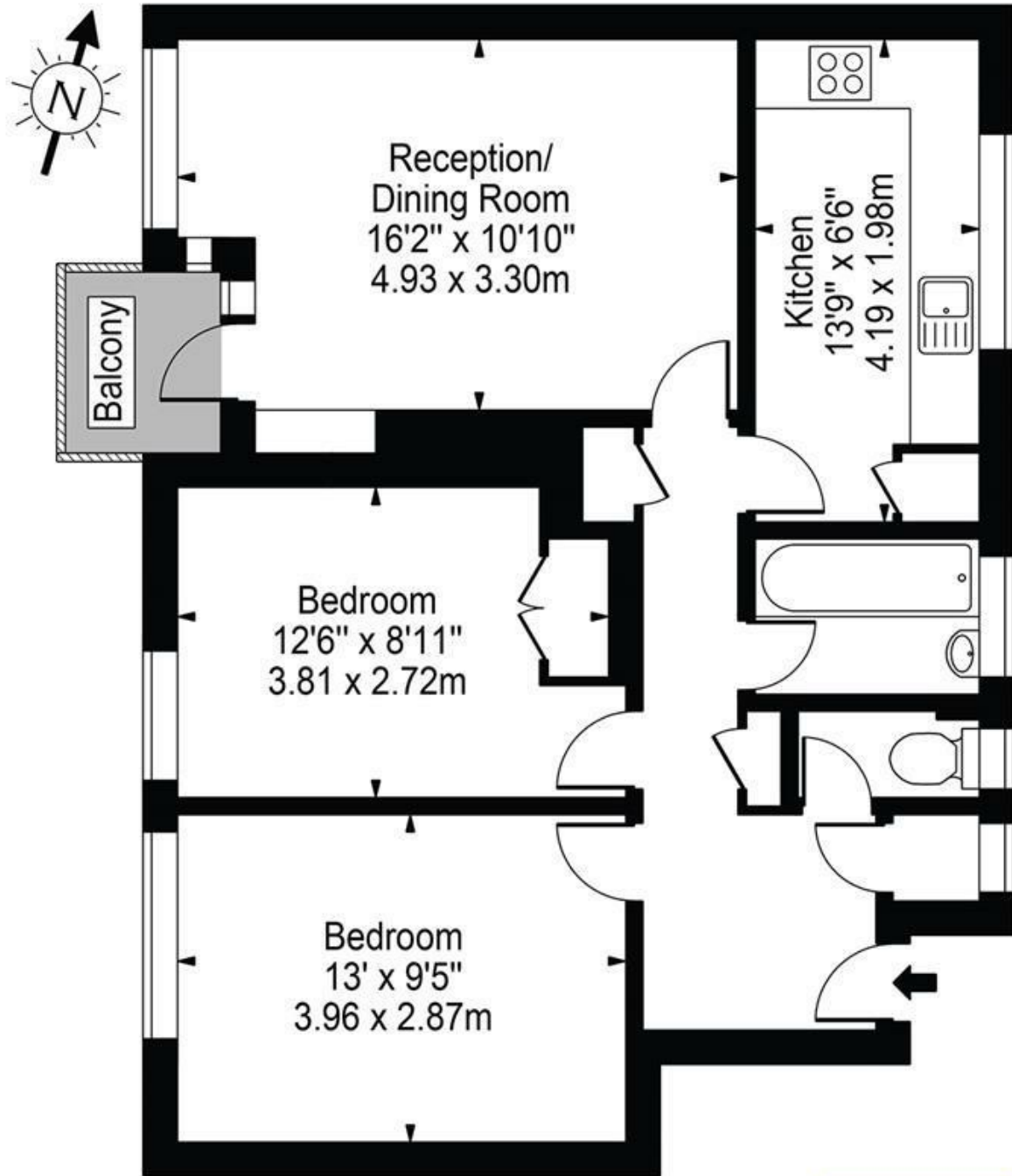
£1,550





Tildesley Road, SW15

Approx. Gross Internal Area 683 Sq Ft - 63.45 Sq M



First Floor

ALLAN FULLER
EST. 1983

©

For Illustration Purposes Only - Not To Scale Floor Plan by Mira Nikolova Photography

This floor plan should be used as a general outline for guidance only and does not constitute in whole or in part an offer or contract. Any intending purchaser or lessee should satisfy themselves by inspection, searches, enquiries and full survey as to the correctness of each statement. Any areas, measurements or distances quoted are approximate and should not be used to value a property or be the basis of any sale or let.

With regards to any information supplied by us in relation to lease, ground rent and service charge it is essential that you have this information checked by your solicitor. We have transmitted information supplied to us by the vendor of the property but we have not been able to inspect the lease to check its accuracy. Please note that we have not tested any of the equipment or utilities at this property, nothing in these particulars shall be deemed a statement that the property is in good condition or otherwise nor that any of the services or facilities are in good working order. Measurements are approximate they were taken with a sonic tape, are as accurate as possible and usually measured from the widest point of any room. Description provided herein represents the opinion of the author, is given in good faith but should not be constructed as statements of fact. The particulars and photograph are for guidance only.