



Fisher Close, Rotherhithe

Asking Price £500,000 Leasehold

OLIVER  JACQUES
EST. 1986



Fisher Close, Rotherhithe

Enjoying views across Mayflower Park, this two bedroomed apartment offers scenic accommodation on the first floor of a recent Fairview Homes development. Fisher Close dates from 2016 and consists of a mixture of houses and apartments surrounded by a surprising amount of green space. This property is located on the first floor of a four storey building and enjoys a south west facing balcony from the reception room, floor to ceiling windows throughout and gas central heating. Ideal for commuters, the property lies within half a mile of both Rotherhithe and Canada Water stations offering Jubilee and Overground lines to various parts of the City while the 381 bus stops at the entrance to the development.

- Two Bedroom Apartment
- Views Over Mayflower Park
- First Floor Position
- "Jack & Jill" Style Bathroom
- South Facing Balcony
- Gas Central Heating

South East London
020 7231 5050

Email southeast@o-j.co.uk

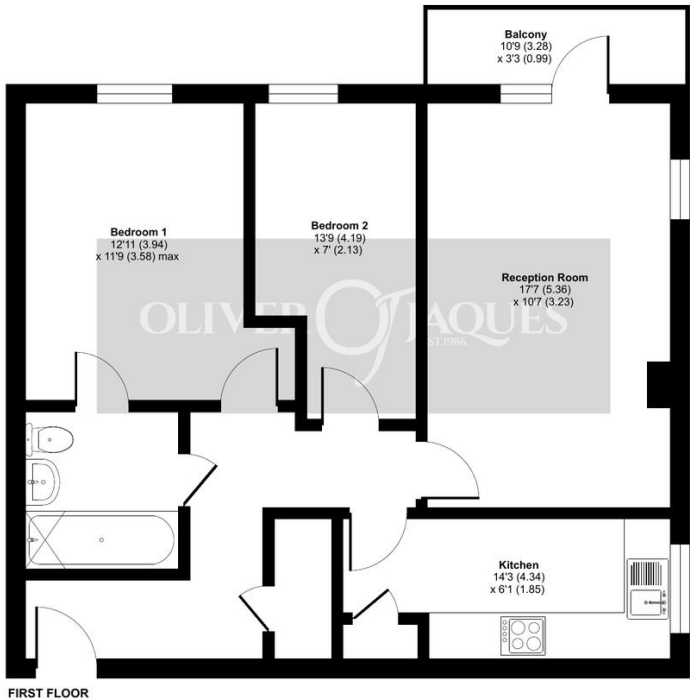
229-231 Lower Road, London, SE16 2LW

web www.o-j.co.uk

Every care has been taken with the preparation of this brochure but it is for general guidance only and complete accuracy cannot be guaranteed. If there is any point, which is of importance professional verification should be sought. This brochure does not constitute a contract or part of a contract. We are not qualified to verify tenure of property. Prospective purchasers should seek clarification from their solicitor or verify the tenure of this property for themselves by visiting www.gov.uk/government/organisations/land-registry. The mention of any appliances, fixtures or fittings does not imply they are in full working order. Photographs are reproduced for general information and it cannot be inferred that any item shown is included in the sale. All dimensions are approximate. Walking times are taken from Google Maps and measured from the centre of the postcode, which may differ from the individual property. We always refer prospective buyers to our panelled conveyancers and Chancery Mortgage Services Ltd. It is your decision whether to use them. Should you decide to do so you should know that we could receive a referral fee from them for recommending them to you.



Fisher Close, London
Approximate Area = 679 sq ft / 63 sq m
For identification only - Not to scale



RICS Certified Property Measurer
Floor plan produced in accordance with RICS Property Measurement Standards incorporating International Property Measurement Standards (IPMS2 Residential). © richcom 2022. Produced for Oliver Jacques. REF: 814542

