



## A 2 BEDROOM APARTMENT CLOSE TO NORTHWOOD TOWN CENTRE

---

Myrtleside Close, Northwood, Middlesex

**ROBSONS**



## A 2 BEDROOM APARTMENT CLOSE TO NORTHWOOD TOWN CENTRE

Myrtleside Close, Northwood, Middlesex HA6 2XQ

**COMMUNAL ENTRANCE HALL • ENTRANCE HALL • LIVING/DINING ROOM WITH ACCESS TO BALCONY • KITCHEN • TWO DOUBLE BEDROOMS • TWO BATHROOMS • GARAGE IN A BLOCK • COMMUNAL GROUNDS • NO UPPER CHAIN**

### Description

Positioned in a popular private development close to the centre of Northwood, this first floor two bedroom two bathroom spacious apartment has the benefit of a private balcony accessed via the living/dining room, a garage in a nearby block, long lease and a share of freehold.

The property has recently undergone a schedule of refurbishment and has two modern fitted bathrooms and a fresh and neutral décor.

The property is being marketed with the advantage of no onward chain.







## Location

Nearby Northwood provides a range of shopping facilities including Waitrose supermarket, a variety of restaurants and other amenities with the Metropolitan Line station providing access to Baker Street and the City. There is a plethora of state and private schooling together with a wide choice of recreational facilities, which include golf courses and fitness centres. The M1, M40 and M25 motorways are also accessible.

## Additional Information

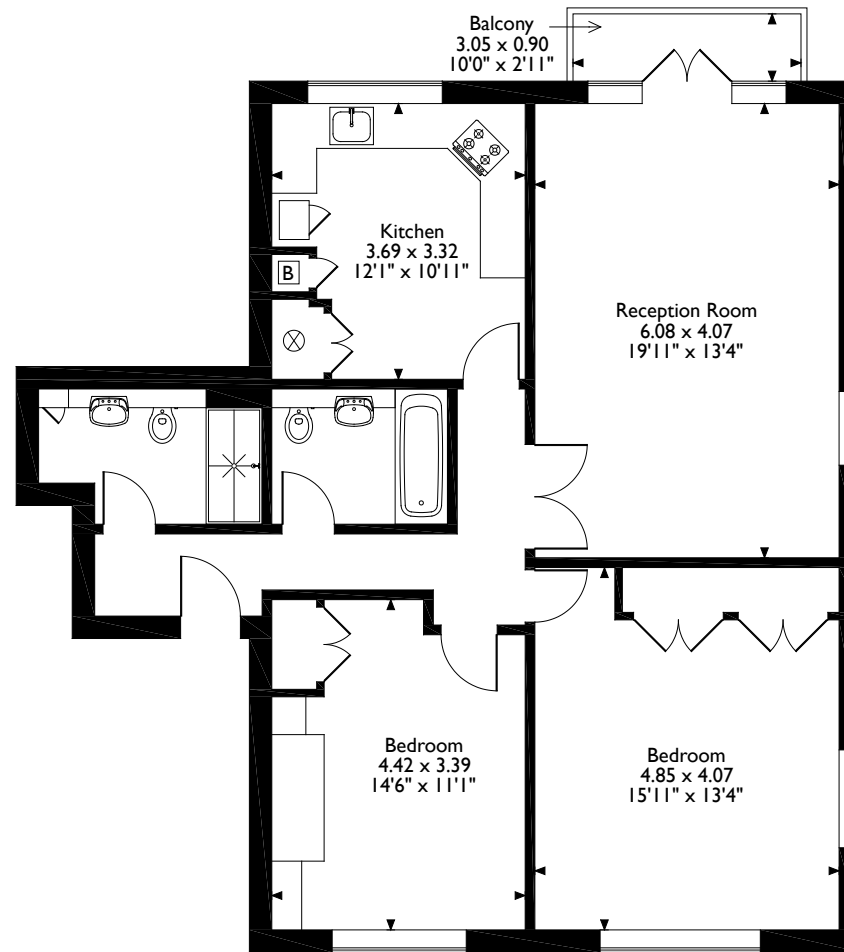
Tenure: Leasehold (share of freehold)

Local Authority: London Borough of Hillingdon

Energy Efficiency Rating: Band D



Myrtleside Close, Northwood, HA6 2XQ  
Approximate Gross Internal Area  
92 Sq M/990 Sq Ft



Please note that the location of doors, windows and other items are approximate and this floorplan is to be used for illustrative purposes only. Unauthorized reproduction is prohibited.

**ROBSONS**

7 Clive Parade, Northwood, Middlesex HA6 2QF  
Tel: 01923 820622 northwood@robsonswb.com

[www.robsonswb.com](http://www.robsonswb.com)

[www.the-londonoffice.co.uk](http://www.the-londonoffice.co.uk)  
40 ST JAMES'S PLACE SW1

Important notice: Robsons, their clients and any joint agents give notice that 1: They are not authorised to make or give any representations or warranties in relation to the property either here or elsewhere, either on their own behalf or on behalf of their client or otherwise. They assume no responsibility for any statement that may be made in these particulars. These particulars do not form part of any offer or contract and must not be relied upon as statements or representations of fact. 2: Any areas, measurements or distances are approximate. Plot sizes and dimensions are taken from Promap and are approximate. The text, photographs and plans are for guidance only and are not necessarily comprehensive. It should not be assumed that the property has all necessary planning, building regulation or other consents and Robsons have not tested any services, equipment or facilities. Purchasers must satisfy themselves by inspection or otherwise.