

Rockley Court, Rockley Road

Hammersmith, London, W14





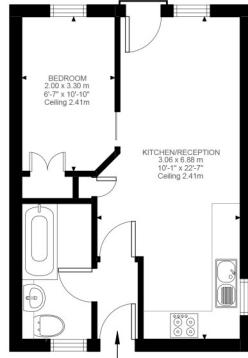
Rockley Court, Rockley Road

Hammersmith, London, W14

O.I.E.O. £300,000

A superb one bedroom third floor flat that is beautifully presented throughout. The flat has been recently refurbished and benefits from a spacious 22'7 x 10'1 open plan reception room with a stylish fully fitted kitchen and ample space for dining and entertaining, a double bedroom with built in wardrobes and a stunning bathroom suite.

Further benefits include a lift and a south facing Juliet balcony. Rockley Court is a much sought after location with close proximity to excellent transport links (Kensington Olympia, Shepherds Bush & Goldhawk Road underground stations) as well as the superb recreational amenities of Westfield, Shepherd's Bush Green and West Kensington. Long lease (180 years) and no onward chain.



Third Floor
350 sq. ft.

Rockley Road, W14
Approximate Gross Internal Area
32.47 SQ.M / 350 SQ.FT

Illustration for identification purposes only. Not to scale.
Floor Plan Drawn According To RICS Guidelines.

Superb, one double bedroom third floor flat which is beautifully presented throughout

Popular location | Open plan reception room | Stylish fully fitted kitchen | Stunning bathroom suite

Recently refurbished throughout | Long Lease (180 years) | South facing Juliette balcony

Excellent links to Kensington Olympia, Shepherds Bush & Goldhawk road stations | No onward chain

Close to transport & amenities | 350 Sq. Ft. (32.47 Sq. M.) Leasehold

Full Energy Performance Certificate available on

All viewings by appointment
through our **Hammersmith Office:**

T: 020 7385 7000
E: hammersmith@lawsonrutter.com

192 Fulham Palace Road, London
W6 9PA

In accordance with the Property Misdescription Act 1991, we wish to emphasise that the information given in these particulars is intended to help you decide whether you wish to view this property. Whilst every care is taken to ensure the accuracy of these particulars please note that all measurements are approximate and we are, for the accuracy of other information, reliant on what the seller has provided. We strongly recommend that you rely on your own inspections and those of your advisors to establish the details of any aspects which are of particular importance. Please note that we have not undertaken any survey of the property or the appliances within it and the buyer must rely on their own investigations prior to exchange of contracts.

