

Anerley Park Road SE20
£277,500

0208 702 9333
[pedderproperty.com](https://www.pedderproperty.com)

pedder



In general

- No onward chain
- A share of the freehold
- Opposite Crystal Palace Park
- Fitted storage
- Residents parking
- Close to multiple transport links

In detail

A one bedroom ground floor purpose built property forming part of a small low-rise development opposite Crystal Palace Park and available for sale with no onward chain.

This well presented apartment benefits from a share of the freehold and could make for an ideal first time or investment purchase.

Highlights include a separate kitchen with plenty of storage and work space, a double bedroom with fitted wardrobes, a generous reception room, double glazing throughout, a modern shower room, and residents off street parking.

This sought after location is opposite 200 acres of parkland and is exceptionally well connected for multiple transport links, including Penge East / West, Anerley and Crystal Palace.

Also, ease of access to a variety of shopping and leisure options at the High Street, Anerley Parade, and central Crystal Palace.

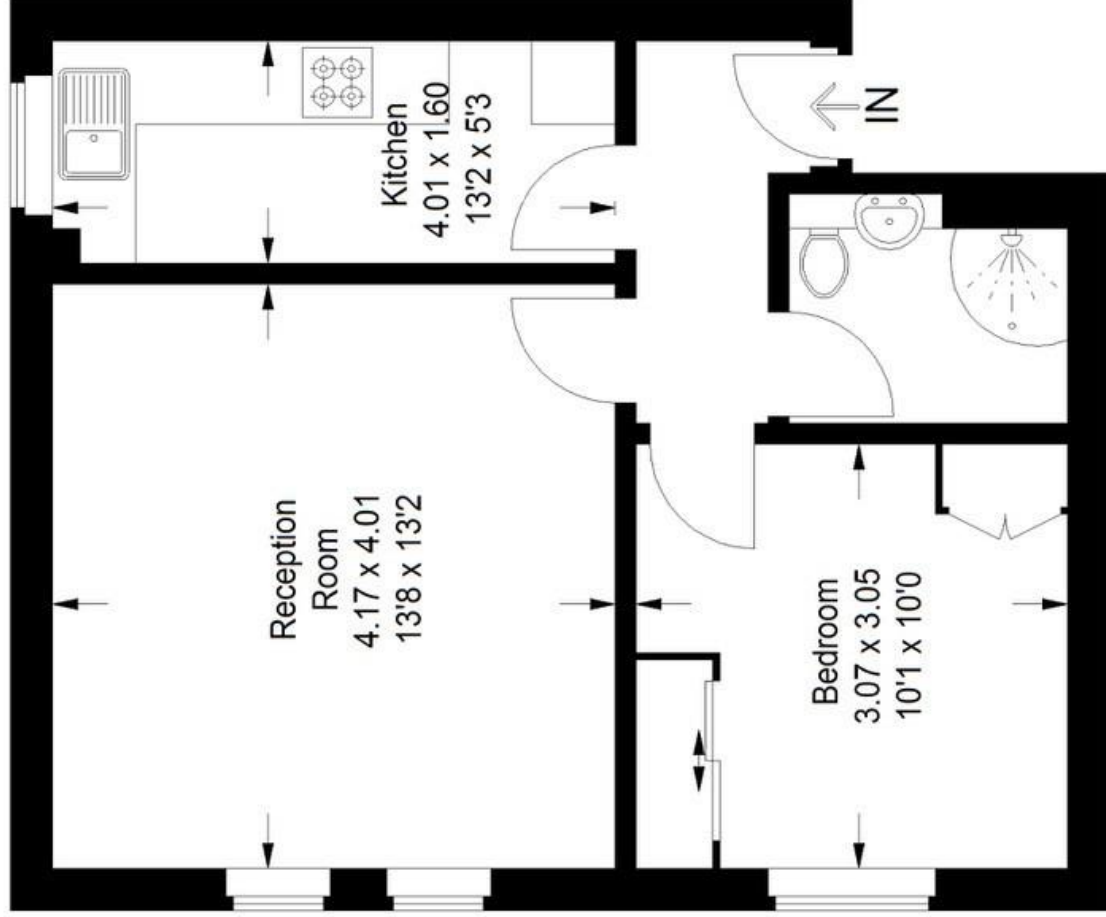
EPC: C | Council Tax Band C | Lease: TBC years remaining | SC: £110pm | GR: N/A | BI: Included in SC



Floorplan

Avery Court, SE20

Approximate Gross Internal Area
41.6 sq m / 448 sq ft



Basement

Copyright www.pedderproperty.com © 2022
These plans are for representation purposes only
as defined by RICS - Code of Measuring Practice.
Not drawn to Scale. Windows and door openings
are approximate. Please check all dimensions,
shapes and compass bearings before making
any decisions reliant upon them.

Score	Energy rating	Current	Potential
92+	A		
81-91	B		
69-80	C	70 c	76 c
55-68	D		
39-54	E		
21-38	F		
1-20	G		

Pedder Property Ltd trading as Pedder for themselves and for the vendor/landlord of this property whose agents they are, give notice that (1) these particulars do not constitute any part of an offer or contract, (2) all statements contained within these particulars are made without responsibility on the part of Pedder or the vendor/landlord, (3) whilst made in good faith, none of the statements contained within these particulars are to be relied upon as a statement of representation or fact, (4) any intending purchaser/tenant must satisfy him/herself by inspection or otherwise as to the correctness of each of the statements contained within these particulars, (5) the vendor/landlord does not make or give either Pedder or any person in their employment any authority to make or give representation or warranty whatsoever in relation to this property.