



Dog Kennel Hill, SE22  
£2,150 pcm

0208 702 8222  
[pedderproperty.com](https://pedderproperty.com)

**pedder**





# In general

- Two double bedrooms
- Split-level
- Modern block
- Part-furnished
- Available early April
- EPC Rating: C

# In detail

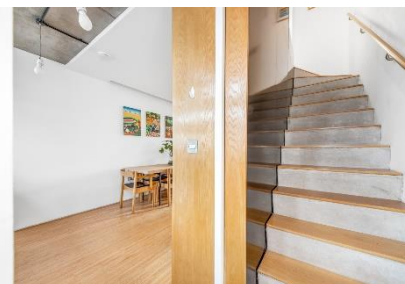
Stunning, split-level two-double bedroom apartment available to rent in this award-winning modern building ideally located between East Dulwich and Denmark Hill.

Boasting over 720 Sq Ft of internal space – including a beautifully bright 27-ft open plan kitchen reception which leads onto a private south-facing balcony with skyline views. On the upper floor – there are two comfortable double bedrooms and a modern bathroom.

The building benefits from underground car parking, secure bike storage and a lift.

Enviably located for the strong transport links into The City and West End from East Dulwich station (0.2 miles) and Denmark Hill station (0.5) as well as bus connections into the neighbouring Herne Hill, Peckham and Camberwell. There are a host of parks and green spaces nearby as well as the independent shops, restaurants and bars of Lordship Lane and Bellenden Road.

Available early April.





Score	Energy rating	Current	Potential
92+	<b>A</b>		
81-91	<b>B</b>		
69-80	<b>C</b>	76   c	78   c
55-68	<b>D</b>		
39-54	<b>E</b>		
21-38	<b>F</b>		
1-20	<b>G</b>		

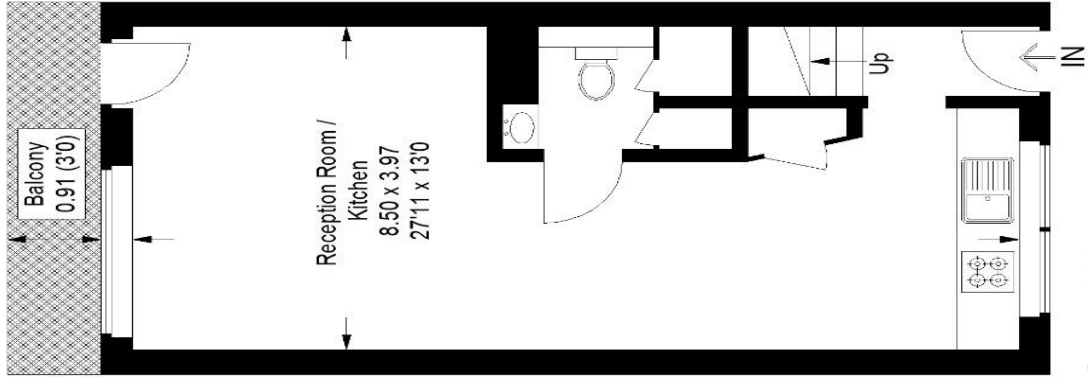
## Dog Kennel Hill SE22

Approximate Gross Internal Area

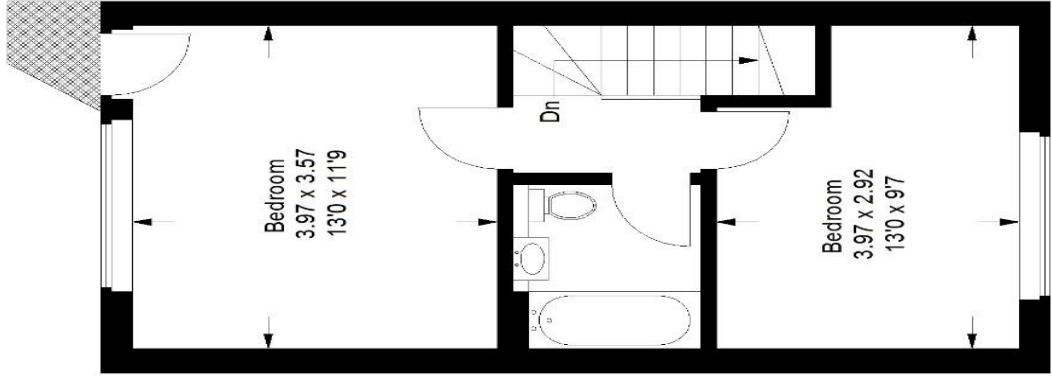
Second Floor = 33.9 sq m / 365 sq ft

Third Floor = 33.8 sq m / 364 sq ft

Total = 67.7 sq m / 729 sq ft



**Second Floor**



**Third Floor**

Copyright www.pedderproperty.com © 2022

These plans are for representation purposes only as defined by RICS - Code of Measuring Practice. Not drawn to Scale. Windows and door openings are approximate. Please check all dimensions, shapes and compass bearings before making any decisions reliant upon them.

Pedder Property Ltd trading as Pedder for themselves and for the vendor/landlord of this property whose agents they are, give notice that (1) these particulars do not constitute any part of an offer or contract, (2) all statements contained within these particulars are made without responsibility on the part of Pedder or the vendor/landlord, (3) whilst made in good faith, none of the statements contained within these particulars are to be relied upon as a statement of representation or fact, (4) any intending purchaser/tenant must satisfy him/herself by inspection or otherwise as to the correctness of each of the statements contained within these particulars, (5) the vendor/landlord does not make or give either Pedder or any person in their employment any authority to make or give representation or warranty whatsoever in relation to this property.