

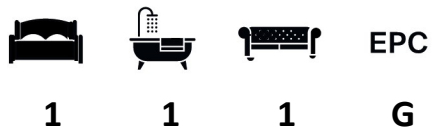


St Johns Wood Park, St Johns Wood NW8 6NJ

**WAYNE
& SILVER**

St Johns Wood Park, St Johns Wood NW8 6NJ

A unique 1 bedroom ground floor apartment situated within the Boydell Court Development, benefitting from 24 hour concierge in a secure gated site with communal parking. The apartment is fully air conditioned and decorated to a very high standard. Boydell Court is conveniently located within easy distance to local amenities and transport facilities of St John's Wood and Swiss Cottage.



Guide price: £650 Per Week

Tenure:

Service Charge: Add text here

Local Authority:

Council Tax Band:



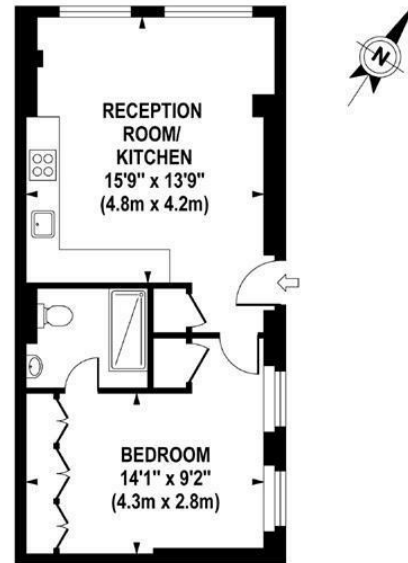






FLAT 108 BOYDELL COURT

Approximate Gross Internal Area 450 sq ft / 41.8 sq m



GROUND FLOOR
GROSS INTERNAL
FLOOR AREA 450 SQ FT

Although every attempt has been made to ensure accuracy, all measurements are approximate.
The floor plan's for illustrative purposes only and not to scale. Measured in accordance to RICS standards.
DE-PHOTOGRAPHY.NET

41 Heath Street
Hampstead
London
NW3 6UA

We would be delighted to tell you more
020 7431 4488
info@wayne-silver.com

wayne-silver.com