



149 Upper Richmond Road, Putney, London, SW15 2TX

t: 0208 788 8822

e: putney@allanfuller.co.uk

www.allanfuller.co.uk

48 Putney Hill London, SW15

An amazing three double bedroom apartment situated within a Central Putney location.

This spacious apartment offers in excess of 1350 sq ft of lateral accommodation and comprises of a generous entrance hall, large reception room with sliding doors to private balcony, separate kitchen, main bedroom with four piece en-suite bathroom and private balcony, two further double bedrooms and family bathroom. The property also benefits from its own private entrance, private wrap-around terrace, two balconies, allocated secure parking space and communal gardens.

Located in a Central Putney location giving easy access to Putney High Street and both Putney station & East Putney tube station as well as the nearby green open spaces of Wandsworth Park and the River Thames as well as Putney Heath and Wimbledon Common.

EPC - C



£650,000

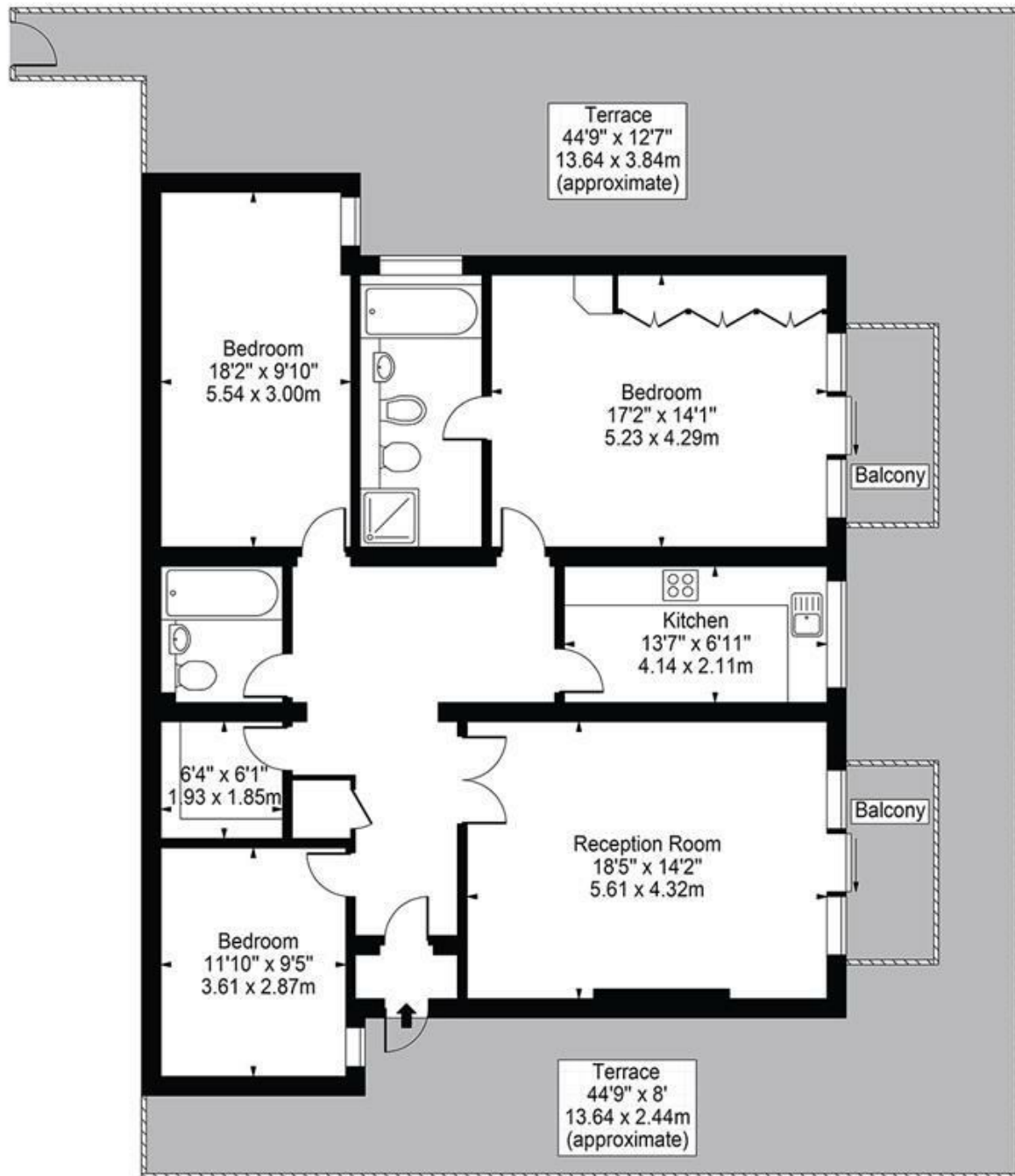
Leasehold - Share of Freehold





Langham Court, SW15

Approx. Gross Internal Area 1353 Sq Ft - 125.70 Sq M



Ground Floor

ALLAN FULLER
EST. 1983

©

For Illustration Purposes Only - Not To Scale Floor Plan by Mira Nikolova Photography

This floor plan should be used as a general outline for guidance only and does not constitute in whole or in part an offer or contract. Any intending purchaser or lessee should satisfy themselves by inspection, searches, enquiries and full survey as to the correctness of each statement. Any areas, measurements or distances quoted are approximate and should not be used to value a property or be the basis of any sale or let.

With regards to any information supplied by us in relation to lease, ground rent and service charge it is essential that you have this information checked by your solicitor. We have transmitted information supplied to us by the vendor of the property but we have not been able to inspect the lease to check its accuracy. Please note that we have not tested any of the equipment or utilities at this property, nothing in these particulars shall be deemed a statement that the property is in good condition or otherwise nor that any of the services or facilities are in good working order. Measurements are approximate they were taken with a sonic tape, are as accurate as possible and usually measured from the widest point of any room. Description provided herein represents the opinion of the author, is given in good faith but should not be constructed as statements of fact. The particulars and photograph are for guidance only.