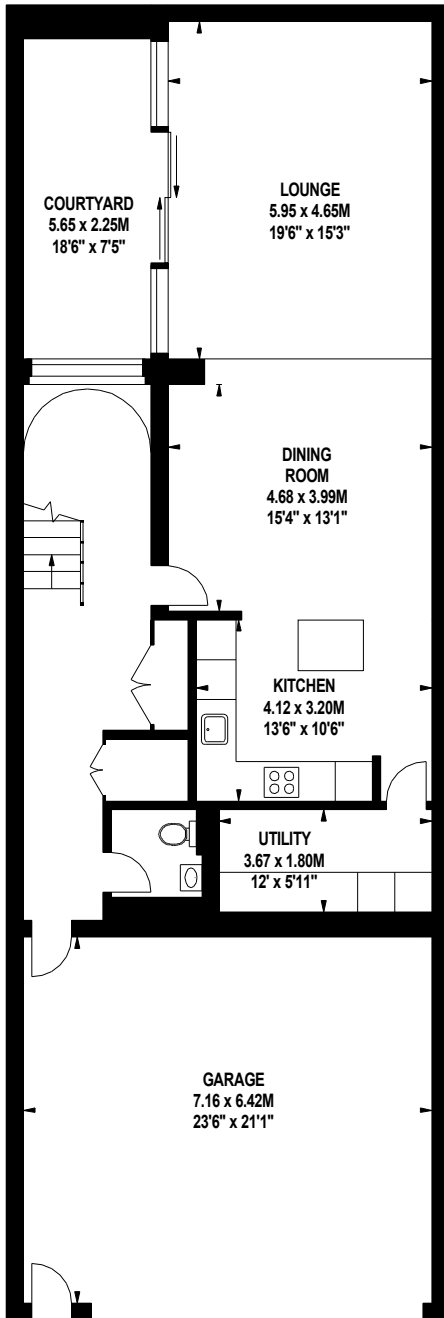
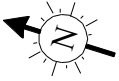


Chiswick High Road, W4

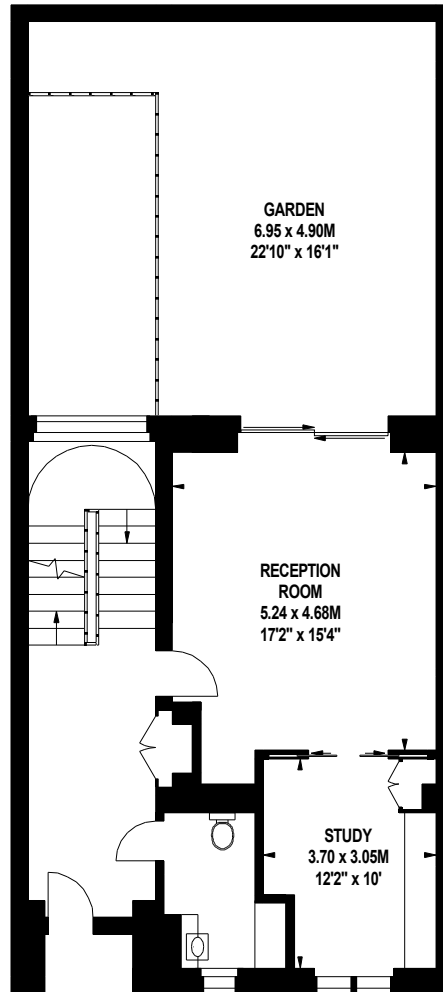
Approximate gross internal area

267.09 sq m / 2875 sq ft
(Excluding Garage)

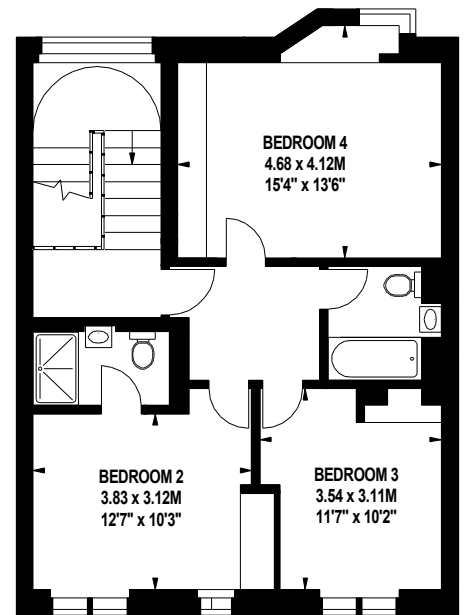
Garage
46.45 sq m / 500 sq ft



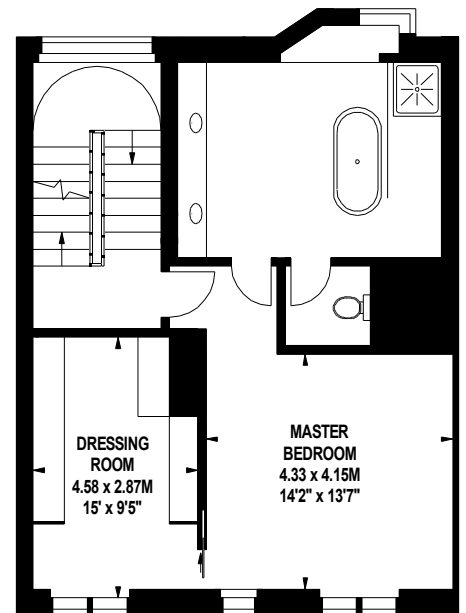
976 sq ft
Lower Ground Floor



595 sq ft
Ground Floor



652 sq ft
Second Floor



652 sq ft
First Floor

The floor plan is not to scale and measurements and areas shown are approximate and therefore should be used for illustrative purposes only. The plan has been prepared in accordance with the RICS code of Measuring Practice and whilst we have confidence in the information produced, it must not be relied on. If there is any aspect of particular importance, you should carry out or commission your own inspection of the property.

Copyright of FeaturePRO.