

ALLAN FULLER
— EST. 1983 —

149 Upper Richmond Road, Putney, London, SW15 2TX

t: 0208 788 8822

e: putney@allanfuller.co.uk

www.allanfuller.co.uk

Woodlawn Close London, SW15

Not only a brilliant house, but also a very private, tucked away location, only a short walk to East Putney tube station and 3 mini-supermarkets. You can park in your own space in front of the house, and that's not something you can guarantee in virtually any Putney Road! Comes with its own garage as well.

The well-designed and generous interior is approx. 1185 sq. ft. Comprising on the ground floor, entrance hall, cloakroom, a superb large living area which stretches from the front to the back to the house, where it opens onto a westerly aspect sunny garden and separate kitchen. Above on the first floor, three excellent bedrooms and two bathrooms. Subject to necessary permission the ground floor has scope to extend at the rear.

There is no onward chain, so the house is ready for early occupation.

EPC – C Council Tax Band: F



£950,000

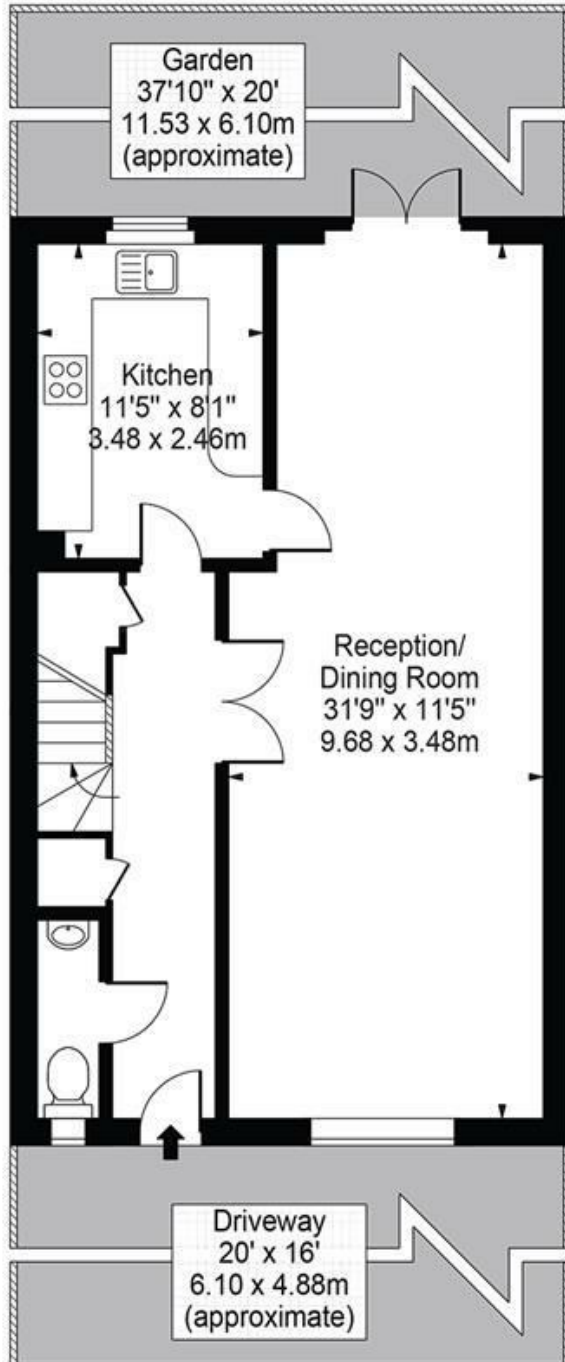
Freehold



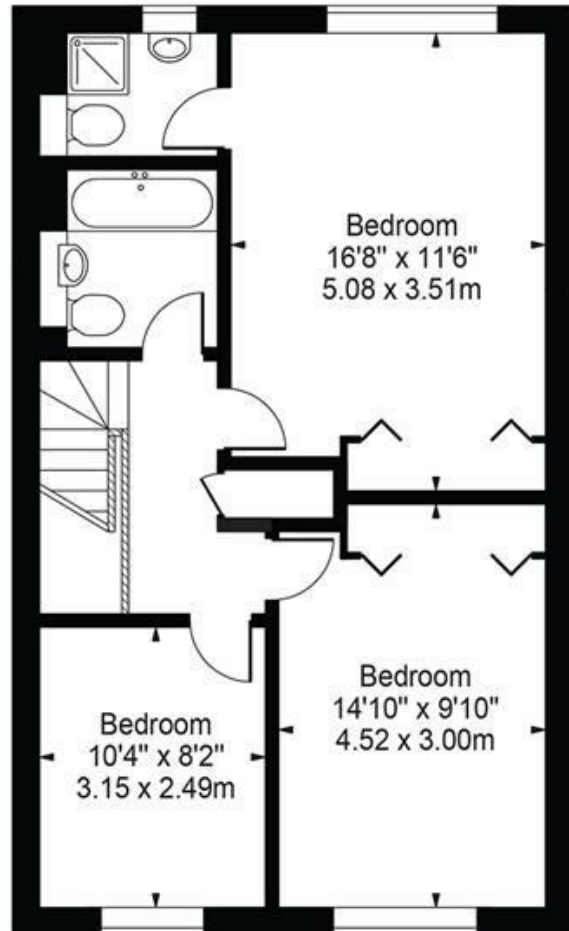
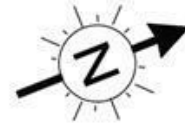


Woodlawn Close, SW15

Approx. Gross Internal Area 1185 Sq Ft - 110.09 Sq M



Ground Floor



First Floor



For Illustration Purposes Only - Not To Scale Floor Plan by Mira Nikolova Photography

This floor plan should be used as a general outline for guidance only and does not constitute in whole or in part an offer or contract. Any intending purchaser or lessee should satisfy themselves by inspection, searches, enquiries and full survey as to the correctness of each statement. Any areas, measurements or distances quoted are approximate and should not be used to value a property or be the basis of any sale or let.

With regards to any information supplied by us in relation to lease, ground rent and service charge it is essential that you have this information checked by your solicitor. We have transmitted information supplied to us by the vendor of the property but we have not been able to inspect the lease to check its accuracy. Please note that we have not tested any of the equipment or utilities at this property, nothing in these particulars shall be deemed a statement that the property is in good condition or otherwise nor that any of the services or facilities are in good working order. Measurements are approximate they were taken with a sonic tape, are as accurate as possible and usually measured from the widest point of any room. Description provided herein represents the opinion of the author, is given in good faith but should not be constructed as statements of fact. The particulars and photograph are for guidance only.