

Aston Road Raynes Park, SW20 8BG

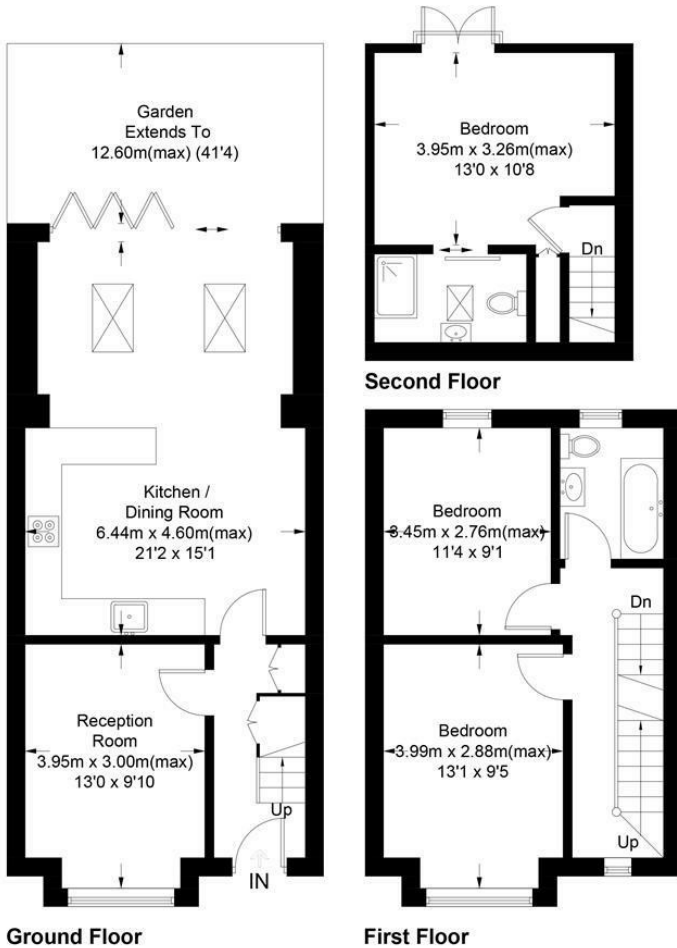
POA Freehold



This fantastic THREE DOUBLE BEDROOM, TWO BATHROOM fully extended Edwardian Apostle house with an attractive brick fronted fascia and bespoke design loft extension is ideally located only 0.2 Miles to Raynes Park High Street and Station. An excellent first or second time purchase entrance hall with under stairs storage, separate front reception room, beautiful extended open plan kitchen/dining/family room with bi folding doors, granite work tops and integrated appliances. On the first floor there is a modern family bathroom and two double bedrooms with chimney stacks removed. The loft has also been converted with a bespoke layout creating a superb master bedroom and modern en-suite shower room.

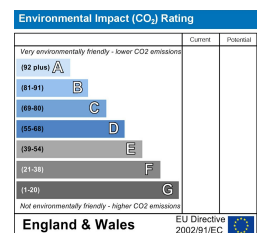
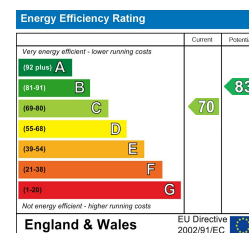
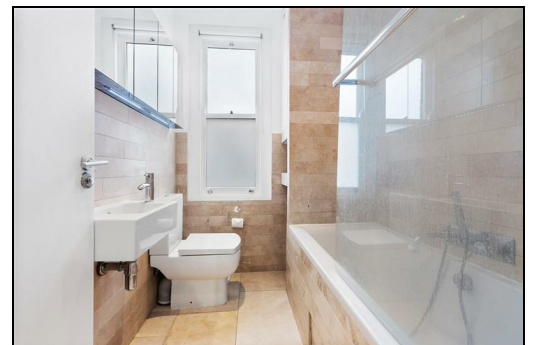
Aston Road

Approximate Gross Internal Area = 99.1 sq m / 1067 sq ft



This floor plan is for representation purposes only and is not drawn to scale.
The Gross Internal Area includes outbuildings shown on the plan.
 Whilst every attempt has been made to ensure the accuracy of the plan measurements of doors, windows and rooms are approximate only and should be checked before making any decisions reliant upon them.
 Copyright Bespokeplans.co.uk (ID822996)

- Three Double Bedroom's
- Two Modern Bathroom's
- Brick Fronted Fascia
- Edwardian Apostle House
- 0.2 Miles To Raynes Park Station
- Bespoke Designed Master Bedroom
- Fantastic Open Plan Kitchen/Family Room
- Separate Front Reception Room
- Fully Extended
- EPC - C



For Free Mortgage Quote and Best Mortgage Rates, call Ellisons Mortgage Advisor on 0208 944 9595



Although these particulars are believed to be correct, their accuracy is not guaranteed and they do not form part of any contract.

Celebrating 30 years of successful Sales and Lettings in Merton

