



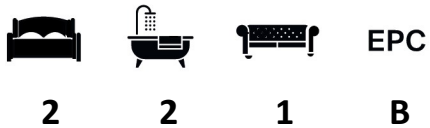
Casson Square, London SE1 7GU

WAYNE
& SILVER

Casson Square, London SE1 7GU

A brand new and luxurious 2 bedroom apartment offered to rent on the 13th floor in the beautifully designed Eight Casson Square development. The apartment features: 2 double bedrooms, 2 bathrooms, a bespoke open plan kitchen/reception room with amazing views overlooking the River Thames.

Welcome to central riverside living in the city's most vibrant destination. Eight Casson Square is in the heart of the city, next door to Waterloo Station and adjacent to the London Eye & Jubilee Gardens. The building has 24-hour concierge, a fully equipped gym, Olympic sized swimming pool, sauna and treatment rooms available to the residence. The location is ideal as it is close to all the attractions and amenities of Central London



Guide price: £1,250 Per Week

Tenure:

Service Charge: Add text here

Local Authority: Lambeth

Council Tax Band: G





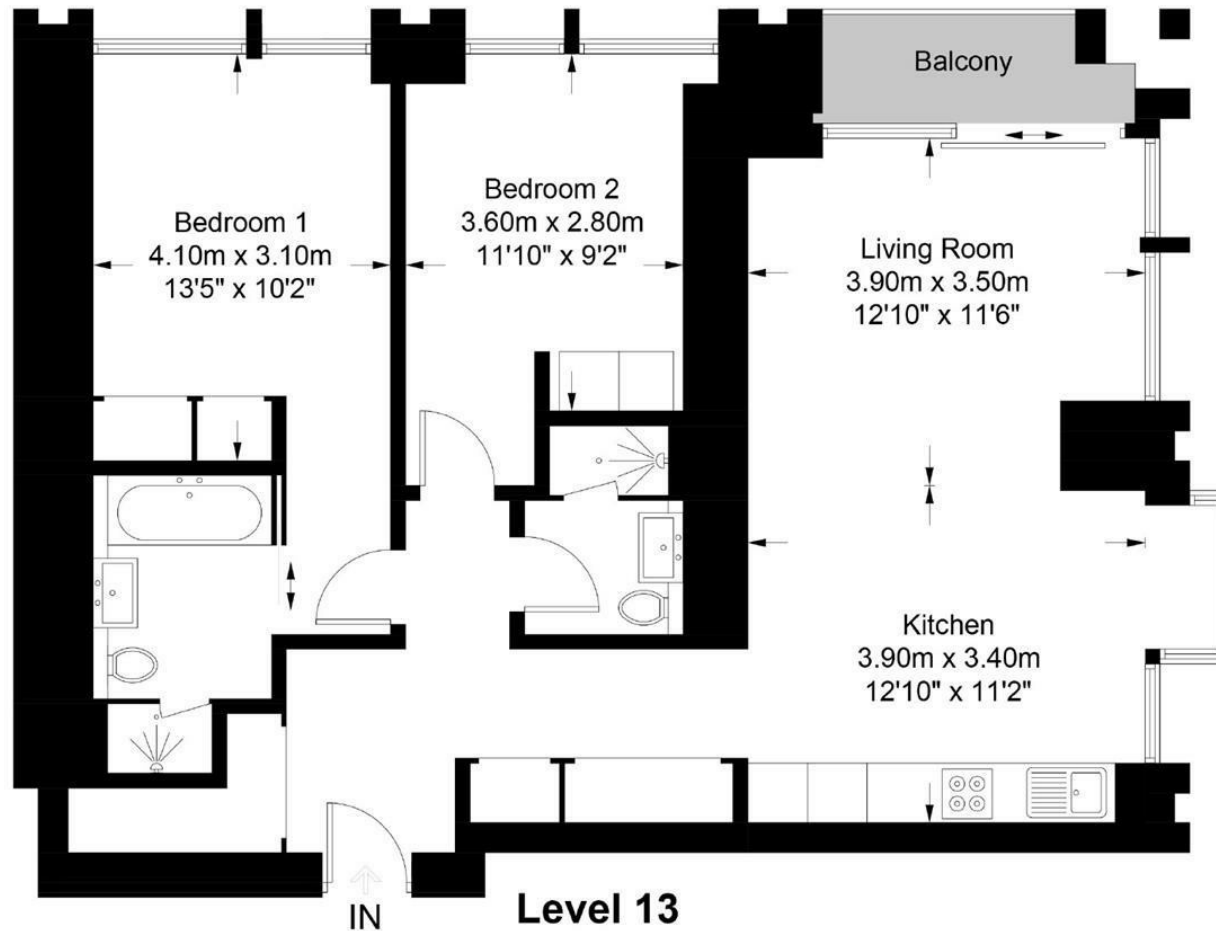






Casson Square, SE1

Approximate Gross Internal Area = 878 sq ft / 82 sq m



This plan is for layout guidance only. Not drawn to scale unless stated. Windows and door openings are approximate. Whilst every care is taken in the preparation of this plan, please check all dimensions, shapes and compass bearings before making any decisions reliant upon them. (ID796868)

41 Heath Street
Hampstead
London
NW3 6UA

We would be delighted to tell you more
020 7431 4488
info@wayne-silver.com

wayne-silver.com