



# Lexington Building, Bow Quarter

Asking Price £525,000 Share of Freehold

OLIVER *OJ* JACQUES  
EST.1986





## Lexington Building, Bow Quarter

This warehouse style two bedroom apartment with share of freehold offers ample living space and a superb location within the prestigious Bow Quarter Development. The apartment is situated on the first floor of the Lexington Building comprising a bright and spacious reception room with two double bedrooms, walk-in-wardrobe, an open-plan kitchen and family size bathroom. Benefiting from all the amenities of The Bow Quarter Development offering a 24 hour concierge, onsite leisure centre with gym, pool, sauna, steam room and Jacuzzi, including an onsite shop and portered mailroom.

- Modern Décor
- Two Double Bedrooms
- Two Factory Windows
- Gated Development
- Swimming Pool & Gym
- Share Of Freehold

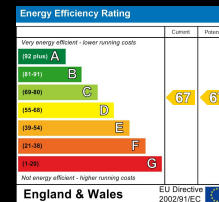
Oliver Jaques Bow  
020 8980 0999

Email [east@o-j.co.uk](mailto:east@o-j.co.uk)

Unit A Arlington Building, 60 Fairfield Road, London, E3 2UB

web [www.o-j.co.uk](http://www.o-j.co.uk)

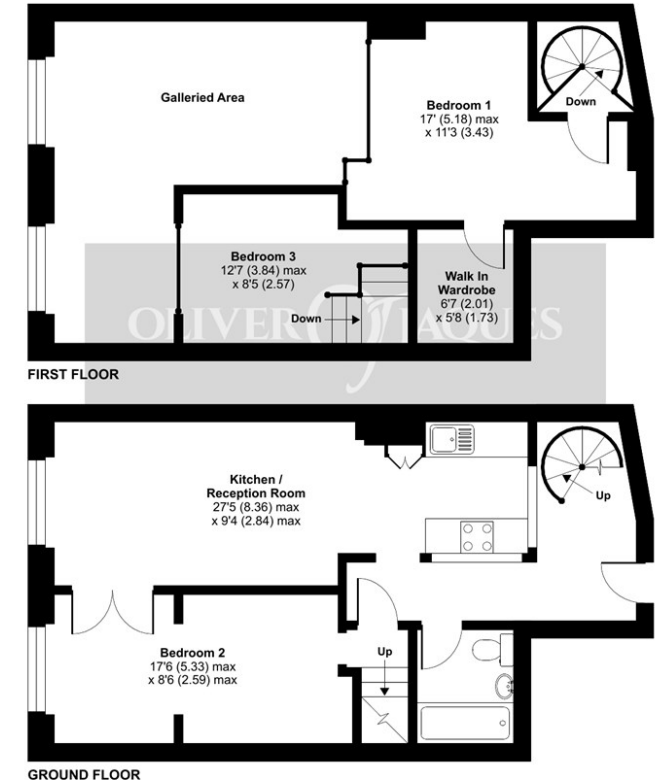
Every care has been taken with the preparation of this brochure but it is for general guidance only and complete accuracy cannot be guaranteed. If there is any point, which is of importance professional verification should be sought. This brochure does not constitute a contract or part of a contract. We are not qualified to verify tenure of property. Prospective purchasers should seek clarification from their solicitor or verify the tenure of this property for themselves by visiting [www.gov.uk/government/organisations/land-registry](http://www.gov.uk/government/organisations/land-registry). The mention of any appliances, fixtures or fittings does not imply they are in full working order. Photographs are reproduced for general information and it cannot be inferred that any item shown is included in the sale. All dimensions are approximate. Walking times are taken from Google Maps and measured from the centre of the postcode, which may differ from the individual property. We routinely refer clients to Chancery Mortgage Services Ltd. It is your decision whether you choose to deal with Chancery Mortgage Services Ltd. In making that decision, you should know that we receive an annual payment benefits from Chancery Mortgage



## Fairfield Road, London, E3

Approximate Area = 894 sq ft / 83 sq m (Excludes Galleried Area)

For identification only - Not to scale



Floor plan produced in accordance with RICS Property Measurement Standards incorporating International Property Measurement Standards (IPMS2 Residential). © nichecom 2022. Produced for Oliver Jaques. REF: 805215

**Tenure:** Share of Freehold

**Ground Rent:** TBC

**Service Charge:** TBC

**Lease Expires:** TBC

**Shared Ownership:** No

**Council Tax Band:** Tower Hamlets London Borough Council (Band )  
£TBC