

## Herbert Road Wimbledon, SW19 3SQ

**£1,375,000 Freehold**



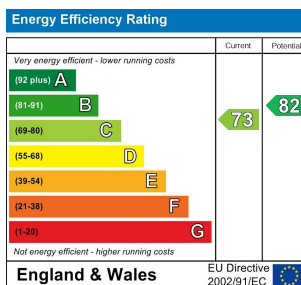
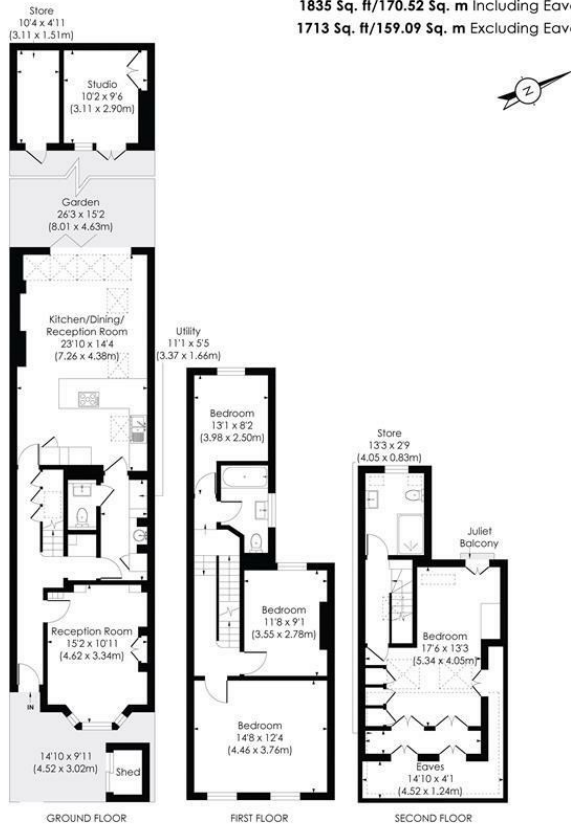
**A fantastic fully extended four bedroom, two bathroom Victorian house offering over 1800 sq/ft of living space with Western aspect garden and superb modern garden room/office. Situated in the heart of Wimbledon Town centre on a quiet no-through road moments from Wimbledon Train Station, amenities and sought-after local schools this well maintained family home, with an EPC Rating of C, offers contemporary living with an abundance of space featuring an open plan kitchen/dining room, front reception room, downstairs utility room and cloakroom. Early viewings highly recommended.**



## HERBERT ROAD, SW19

Approx. Gross Internal Floor Area

1835 Sq. ft/170.52 Sq. m Including Eaves  
1713 Sq. ft/159.09 Sq. m Excluding Eaves



For Free Mortgage Quote and Best Mortgage Rates, call an Ellisons Mortgage Advisor on 020 8944 9494



Although these particulars are believed to be correct, their accuracy is not guaranteed and they do not form part of any contract.

**Celebrating 30 years of successful Sales and Lettings in Merton**

