

Glebe Street, London, W4 2BD

Guide Price £1,100,000

WHITMAN & CO.

SALES · LETTINGS · COMMERCIAL

- Victorian terraced cottage
- 25' Through reception room
- Close to shops, cafes and restaurants
- Sought after Glebe Estate location
- Open aspects front and rear
- No chain

Tenure - Freehold
Local authority - Hounslow
Council Tax - Band F

THE PROPERTY

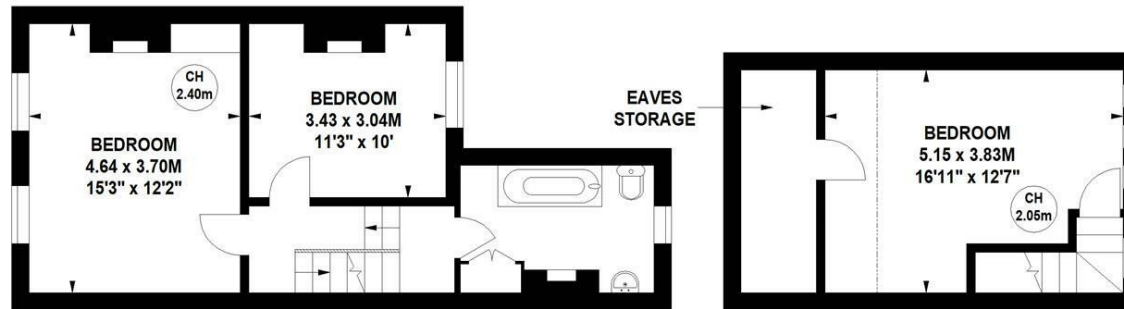
A charming three-bedroom Victorian cottage ideally located in the sought-after Glebe Estate offering close proximity to all amenities. The accommodation comprises three double bedrooms, spacious bathroom, 25' through reception room, 15' kitchen/breakfast room, cloakroom, private 33' garden, open aspect both front and rear, host of original features. Ideally located at the favoured east end of the road within a couple of minutes walk of Devonshire Road and Chiswick High Road's extensive range of shops, cafes and restaurants. No Chain.

Glebe Street, W4

Approximate gross internal area

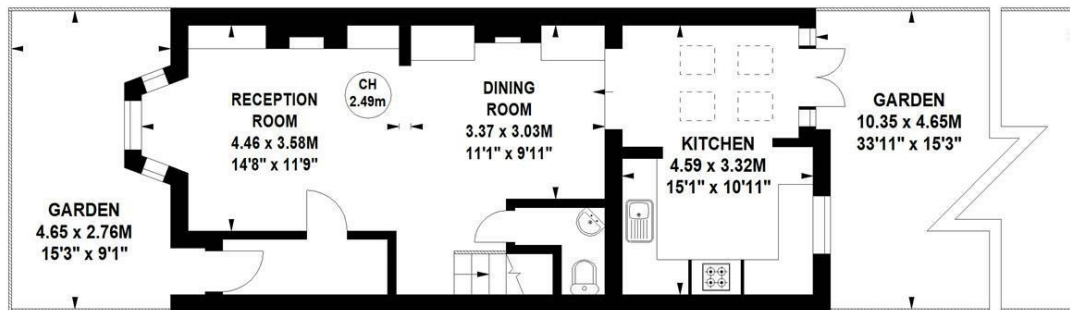
116.96 sq m / 1259 sq ft

Key :
CH - Ceiling Height



First Floor

Second Floor



Ground Floor

Not to scale, for guidance only and must not be relied upon as a statement of fact.
All measurements and areas are approximate only

SITUATION



5-7 Turnham Green Terrace, Chiswick, London, W4 1RG

Tel 020 8747 8800

E-mail sales@whitmanandco.com

Website www.whitmanandco.com