



Princes Riverside Road, Rotherhithe

Asking Price £900,000 Freehold

OLIVER  JACQUES
EST. 1986



Princes Riverside Road, Rotherhithe

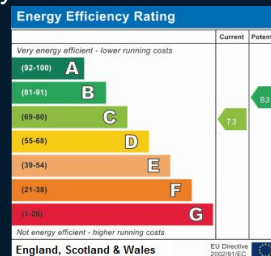
A 1,418sqft terraced townhouse affording direct views of the City across the river in a westerly direction from the first floor reception room. Spanning three floors, the accommodation comprises an integrated garage and home office / bedroom four to the lower floor, a spacious lounge / diner with balcony and river views to the first floor and three bedrooms with two bathrooms on the second floor. Externally there is a private rear garden and driveway to the front. The property has been in the same family for almost 30 years and requires some cosmetic modernisation, but could become a stunning family home in a unique corner of Rotherhithe.

- Three / Four Bedrooms
- First Floor Reception with River Views
- Two Bathrooms & D/S WC
- Rear Garder and River Facing Balcony
- Integrated Garage
- Loft Conversion Potential

South East London
020 7231 5050

Email southeast@o-j.co.uk

229-231 Lower Road, London, SE16 2LW



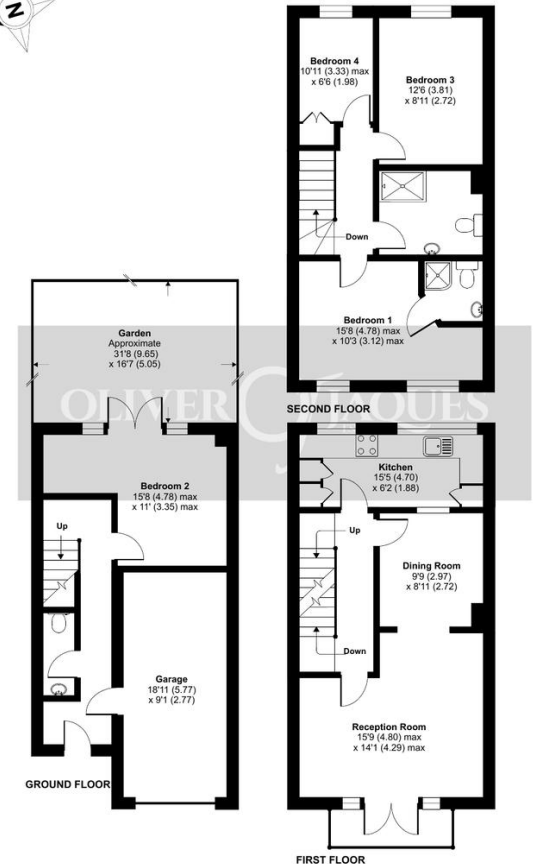
web www.o-j.co.uk

Every care has been taken with the preparation of this brochure but it is for general guidance only and complete accuracy cannot be guaranteed. If there is any point, which is of importance professional verification should be sought. This brochure does not constitute a contract or part of a contract. We are not qualified to verify tenure of property. Prospective purchasers should seek clarification from their solicitor or verify the tenure of this property for themselves by visiting www.gov.uk/government/organisations/land-registry. The mention of any appliances, fixtures or fittings does not imply they are in full working order. Photographs are reproduced for general information and it cannot be inferred that any item shown is included in the sale. All dimensions are approximate. Walking times are taken from Google Maps and measured from the centre of the postcode, which may differ from the individual property. We routinely refer clients to Chancery Mortgage Services Ltd. It is your decision whether you choose to deal with Chancery Mortgage Services Ltd. In making that decision, you should know that we receive an annual payment benefits from Chancery Mortgage Services Ltd, equating to approximately £220 per referral

Princes Riverside Road, London, SE16

Approximate Area = 1418 sq ft / 131.7 sq m (includes garage)

For identification only - Not to scale



Floor plan produced in accordance with RICS Property Measurement Standards incorporating International Property Measurement Standards (IPMS2 Residential). © richcom 2022. Produced for Oliver Jacques. REF: 626084

- **Tenure:** Freehold
- **Ground Rent:** n/a
 - Fixed
- **Service Charge:** £2,000 pa
- **Lease Expires:** n/a
- **Shared Ownership:** No
- **Council Tax Band:** Southwark G
 - £2,657.57