

Location:

Key points:

# Do Better:

Aston Rowe

**Acton:**  
E acton@astonrowe.co.uk  
103-105 Churchfield Road,  
London W3 6AH  
T 020 8992 3600

**Brook Green & Hammersmith:**  
E brookgreen@astonrowe.co.uk  
82 Shepherds Bush Road,  
London W6 7PH  
T 020 7871 6997

UNIT 2

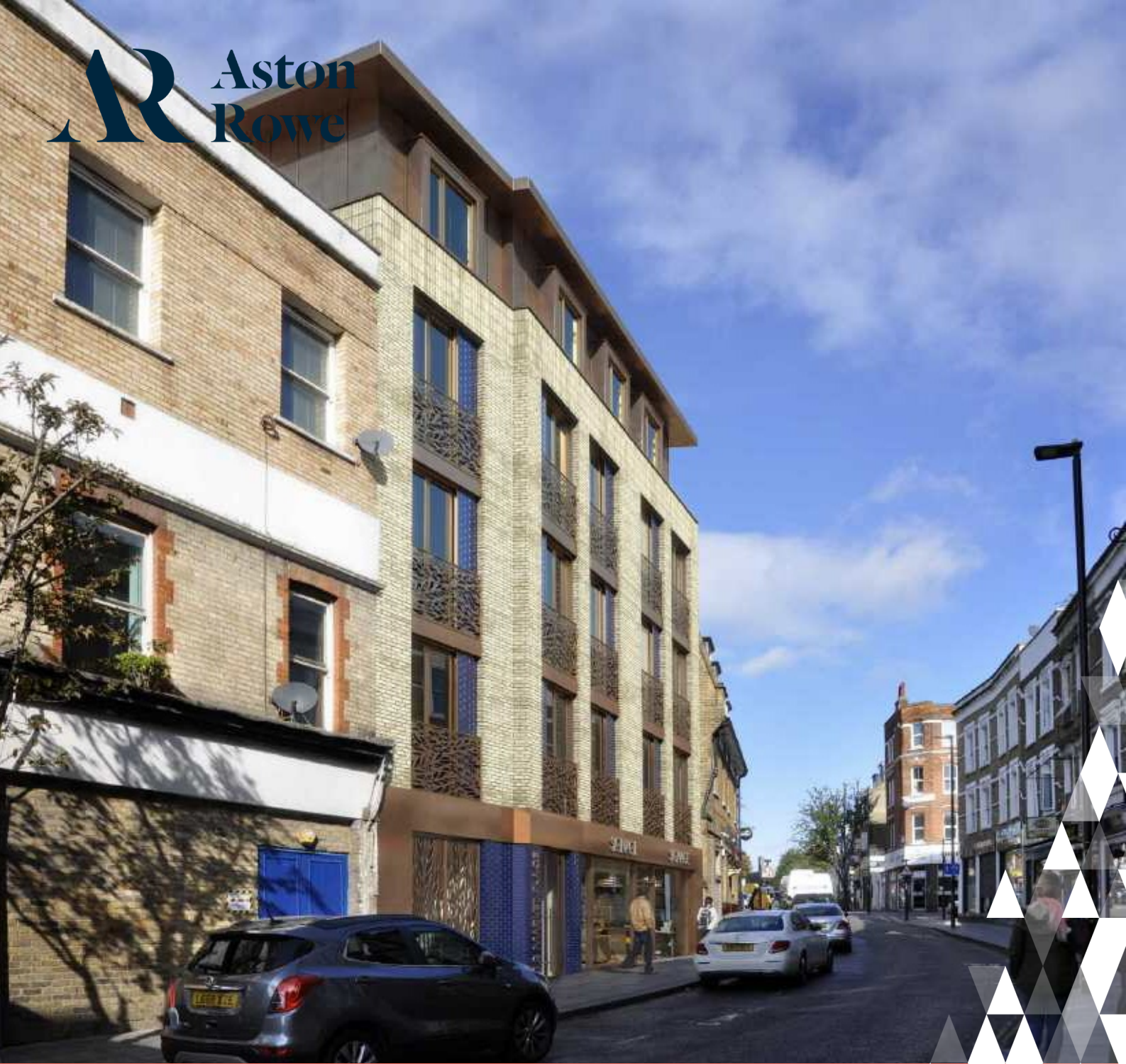
FIRST FLOOR

ONE BEDROOM FLAT

Help to Buy

Backed by HM Government

<b>TOTAL AREA</b> <i>Excludes terrace</i>	50 sqm	535 sqft
<b>KITCHEN + LIVING</b>	5.7m x 5.3m	18'9" x 17'4"
<b>BEDROOM</b>	5.2m x 2.9m	11'10" x 8'11"
<b>BATHROOM</b>	2.5m x 1.8m	7'7" x 5'5"
<b>HALLWAY</b>	2.0m x 1.8m	4'0" x 2'10"
<b>TERRACE</b>	3.5m x 1.7m	26'11" x 4'7"



**Asking price £435,000**  
Market Place,  
London W3 6QS

- 1 Reception rooms
- 1 Bedrooms
- 1 Bathrooms



The current owner says:

HELP TO BUY AVAILABLE! OVER 40% OF THE DEVELOPMENT SOLD!

Prices starting from £415,000!

FLAT 1 - Set on the first floor this one bedroom apartment has an open planned living/kitchen area and benefits from a double bedroom with modern en-suite. The apartment also benefits from a private balcony. Market Place is a sophisticated development of one and two bedroom luxury apartments in a contemporary and elegantly designed building. Each apartment has been architecturally designed to create the perfect home in which to relax, unwind and entertain. Each apartment has the benefit of its own juliet balcony or



What's better:

