



Gipsy Road SE27
£585,000

0208 702 9333
pedderproperty.com

pedder



In general

- Stunning church conversion
- En suite shower room
- 1172sq ft / 108.9 sq m
- 31ft reception room
- Mezzanine
- Open kitchen with breakfast bar
- Brimming with features
- Convenient for transport links

In detail

A rarely available and visually stunning two bedroom, two bathroom split level property forming part of a church conversion, nearby Gipsy Hill rail links.

The space is flooded with natural light and includes a wealth of features such as intricately finished stained glass windows, a vaulted ceiling, exposed beams, and mezzanine.

The twelve-window reception room extends to 31 ft and includes a well appointed kitchen with fitted appliances, granite surfaces and a breakfast bar.

Other prominent aspects include solid oak flooring, two double bedrooms (one en suite), fitted storage, and well maintained common areas.

Gipsy Road offers immediate access to amenities and transport options, as well central Crystal Palace, Norwood Park and West Dulwich.

An exceptional property that should be viewed to be appreciated.

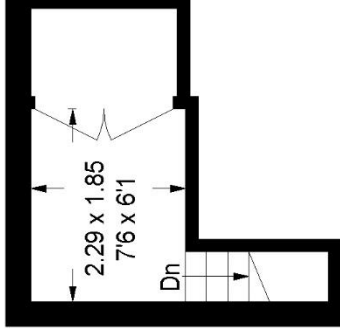
EPC: C



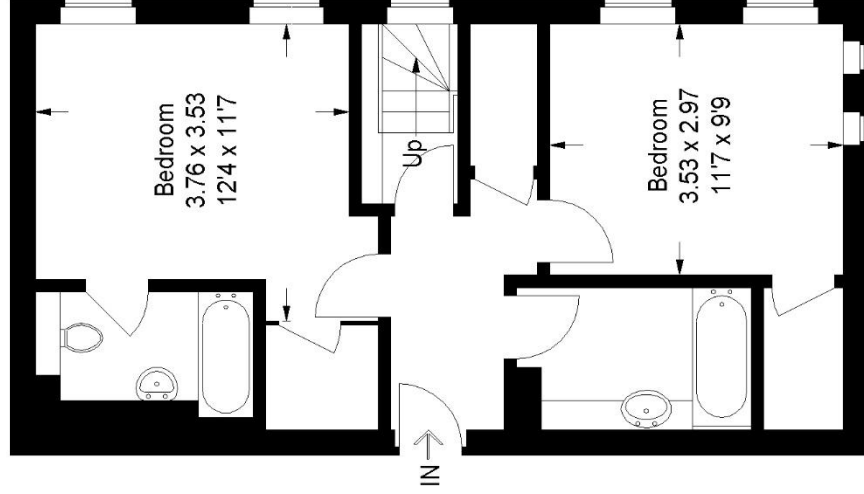
Floorplan

Gipsy Road, SE27

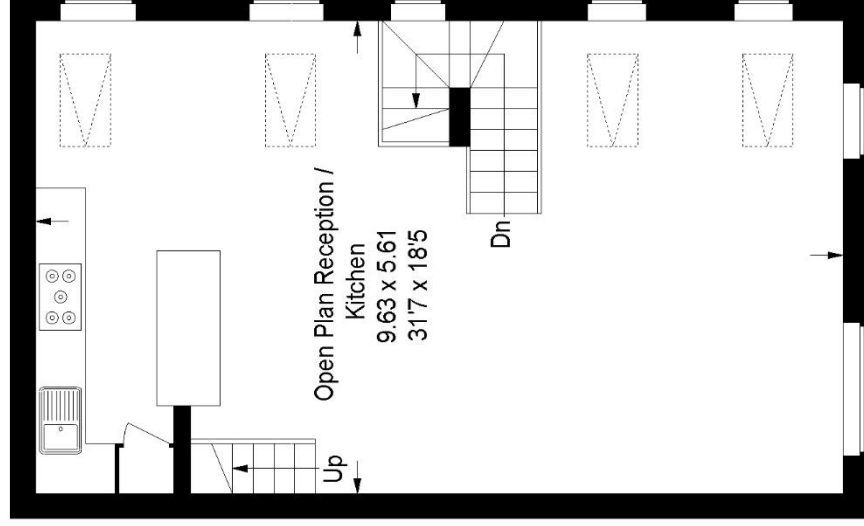
Approximate Gross Internal Area
First Floor = 47.0 sq m / 506 sq ft
Second Floor = 54.5 sq m / 587 sq ft
Third Floor = 7.4 sq m / 79 sq ft
Total = 108.9 sq m / 1172 sq ft



Third Floor



First Floor



Second Floor

Copyright www.pedderproperty.com © 2021

These plans are for representation purposes only as defined by RICS - Code of Measuring Practice. Not drawn to Scale. Windows and door openings are approximate. Please check all dimensions, shapes and compass bearings before making any decisions reliant upon them.

Score	Energy rating	Current	Potential
92+	A		
81-91	B		
69-80	C	74 c	76 c
55-68	D		
39-54	E		
21-38	F		
1-20	G		

Pedder Property Ltd trading as Pedder for themselves and for the vendor/landlord of this property whose agents they are, give notice that (1) these particulars do not constitute any part of an offer or contract, (2) all statements contained within these particulars are made without responsibility on the part of Pedder or the vendor/landlord, (3) whilst made in good faith, none of the statements contained within these particulars are to be relied upon as a statement of representation or fact, (4) any intending purchaser/tenant must satisfy him/herself by inspection or otherwise as to the correctness of each of the statements contained within these particulars, (5) the vendor/landlord does not make or give either Pedder or any person in their employment any authority to make or give representation or warranty whatsoever in relation to this property.