

WAYNE & SILVER



248 Kilburn High Road

Kilburn, London, NW6 2BS

Asking Price £750,000

Built with enormous attention to detail and enlightened design, these carefully cultivated homes provide unique pockets of serenity for those ready to shape their next chapter.

Enjoying striking views over Kilburn Grange Park, on the cusp of central London, The Arbor Collection offers superbly designed homes infused by the eclectic energy of the local neighbourhood around it and inspired by a life lived on the park.

Perfectly placed between West Hampstead, Queen's Park and Maida Vale and a mere 15 minutes from Bond Street, a home at The Arbor Collection offers close proximity to the varied richness of London's most delightful suburbs as well as easy accessibility to Central London.

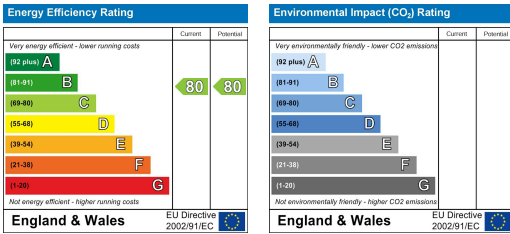
Viewing

Please contact our Wayne & Silver Sales Office on 020 7431 4488 if you wish to arrange a viewing appointment for this property or require further information.

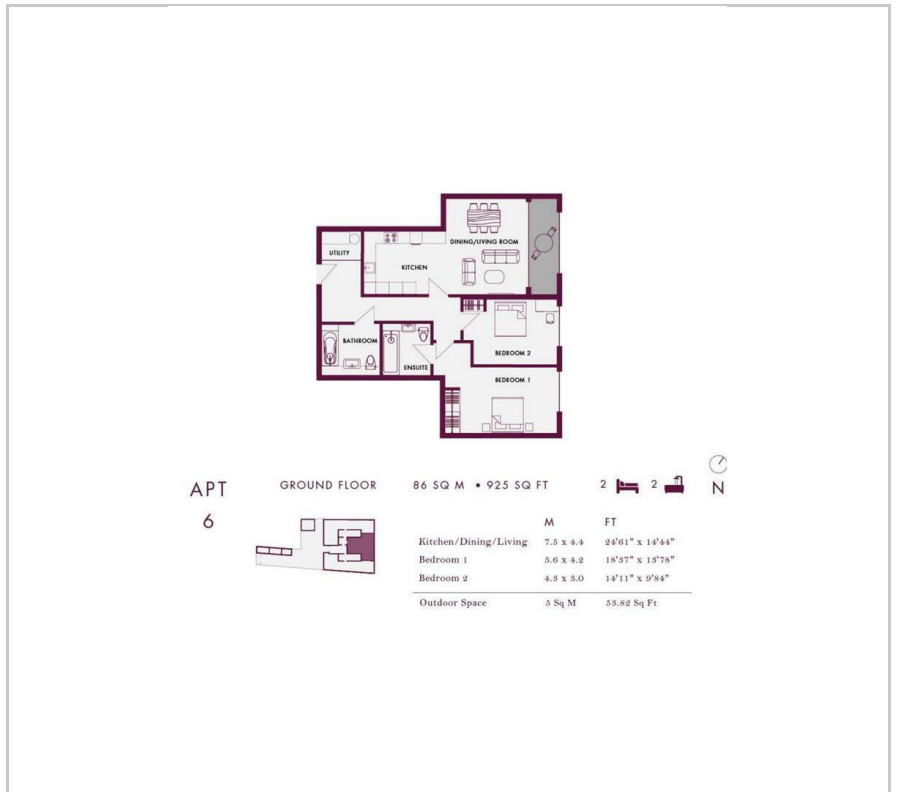




Energy Efficiency Graph



Floor Plan



Area Map



These particulars, whilst believed to be accurate are set out as a general outline only for guidance and do not constitute any part of an offer or contract. Intending purchasers should not rely on them as statements of representation of fact, but must satisfy themselves by inspection or otherwise as to their accuracy. No person in this firm's employment has the authority to make or give any representation or warranty in respect of the property.