

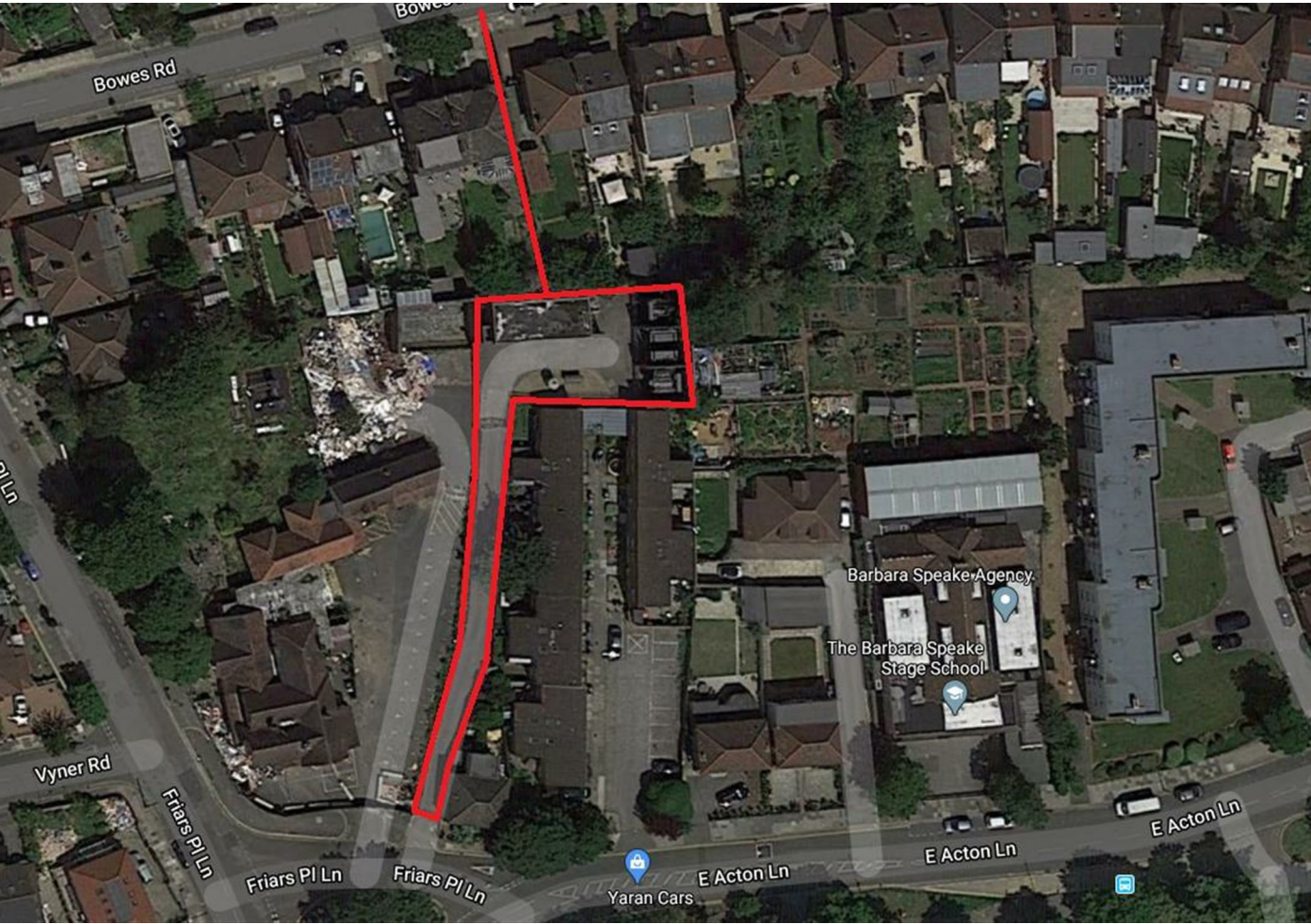


18 Old Oak Common Lane  
Acton  
London  
W3 7EL  
T: 020 8749 9798  
E: sales@churchillmathesons.com  
www.churchillmathesons.com

Churchill&Mathesons

East Acton Lane, London, W3 7ER

Asking Price £1,350,000 Freehold



KEY FEATURES:

- Excellent Location
- Excellent Transport Links
- Total of 9278sqft
- Asking Price: £1,350,000
- Enquire Within For More Info

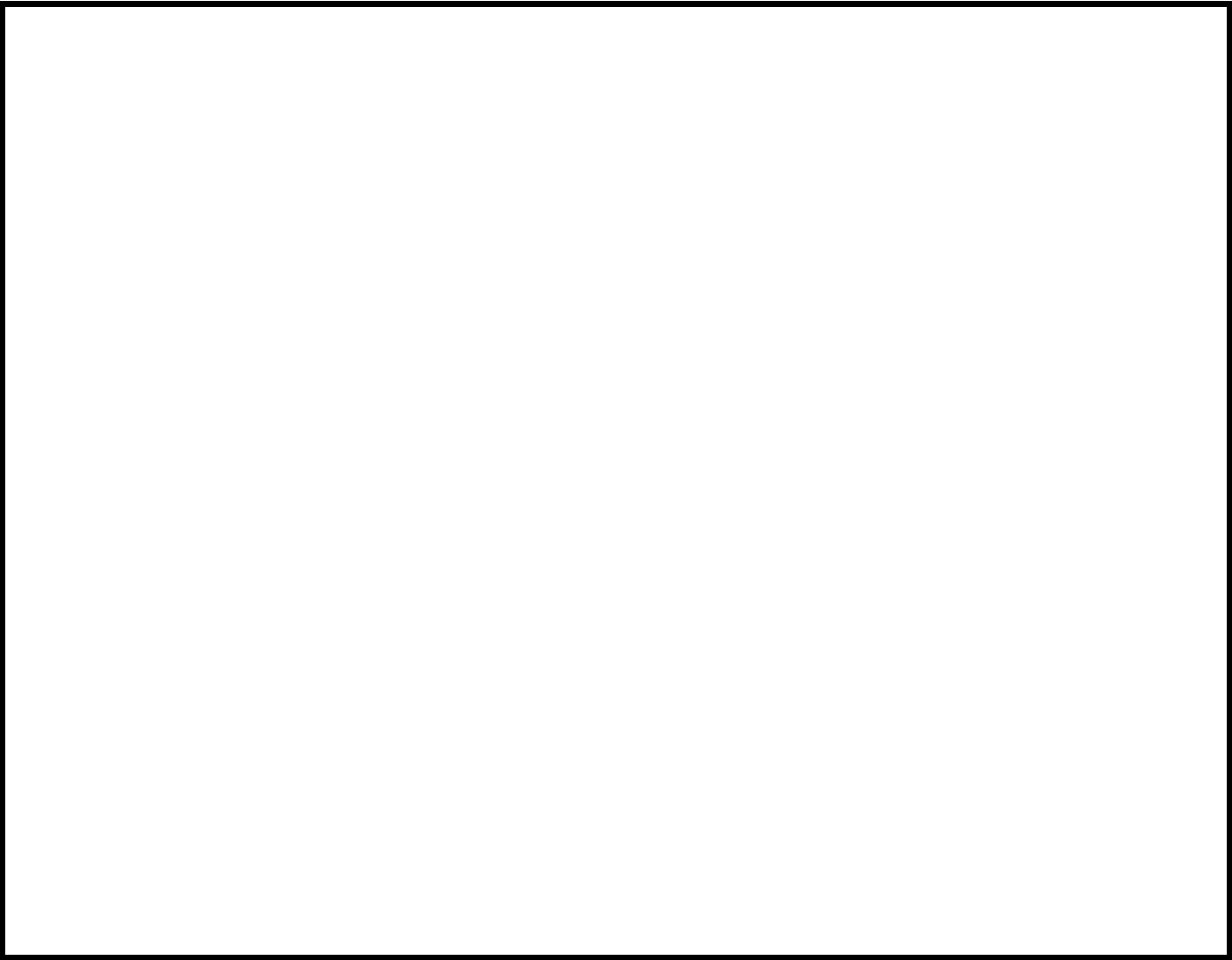
Churchill Estate Agents are proud to present this piece of land for sale, which has a total of 9278 sqft and is enclosed by fencing.


This land is located at the end of East Acton Lane and can also be accessed from Bowes Road. Situated within a 10 minute walk from East Acton station (Central Line) and also a stone's throw away from the Western Avenue (A40).


Planning permission must be obtained by the buyer.

For more information please enquire within.





Energy Efficiency Rating		
	Current	Potential
Very energy efficient - lower running costs		
(92 plus) A		
(81-91) B		
(69-80) C		
(55-68) D		
(39-54) E		
(21-38) F		
(1-20) G		
Not energy efficient - higher running costs		
England & Wales	EU Directive 2002/91/EC	

Environmental Impact (CO <sub>2</sub> ) Rating		
	Current	Potential
Very environmentally friendly - lower CO <sub>2</sub> emissions		
(92 plus) A		
(81-91) B		
(69-80) C		
(55-68) D		
(39-54) E		
(21-38) F		
(1-20) G		
Not environmentally friendly - higher CO <sub>2</sub> emissions		
England & Wales	EU Directive 2002/91/EC	

Whilst every effort is made to give a fair description, the accuracy of these particulars is not guaranteed, neither do they constitute an offer or contract.

**CHURCHILL & MATHESONS ESTATE AGENTS** have not tested any apparatus, equipment, fitting or services and so cannot verify that they are in working order. The buyer is advised to obtain verification from their solicitor or surveyor. Measurements are correct to within+/-6 A sonic tape is used. None of the statements contained in these particulars or any of our properties are to be relied upon as a representation of fact.