



Cleveland Road, London, W4 5HP

Guide Price £425,000

WHITMAN & CO.

SALES · LETTINGS · COMMERCIAL

- Period conversion flat
- Kitchen/breakfast room
- Bright reception room
- Private west facing garden
- 2.88m high ceilings
- Close to numerous amenities

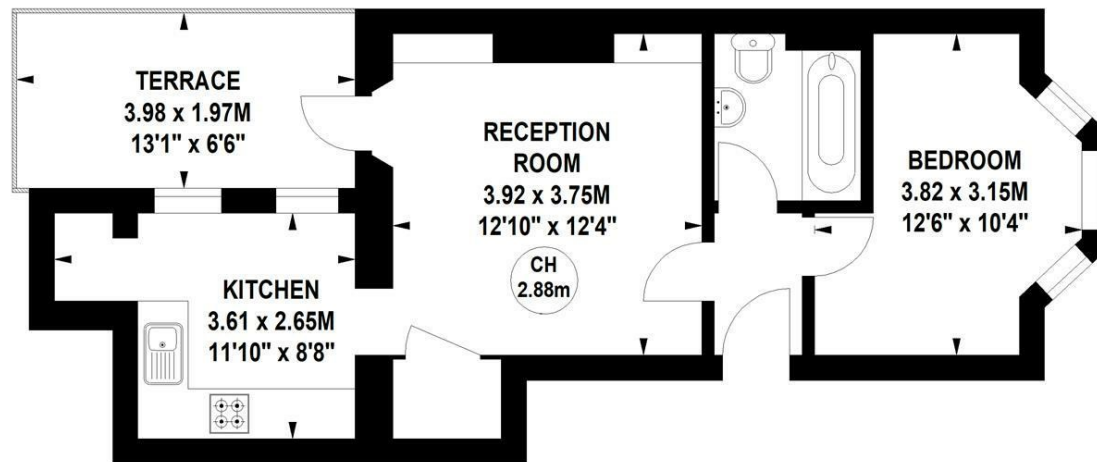
Tenure - Leasehold with share in the freehold
 Lease length - 954 years remaining
 Ground rent - None
 Maintenance charge - £50 pcm
 Local authority - Ealing
 Council Tax - Band C

Aston Court, Cleveland Road, W4

Approximate gross internal area

41.06 sq m / 442 sq ft

Key :
CH - Ceiling Height



Ground Floor

Not to scale, for guidance only and must not be relied upon as a statement of fact.
 All measurements and areas are approximate only

THE PROPERTY

A superb one bedroom period conversion flat with a private garden located on this quiet residential street close to numerous amenities. The flat would make a perfect first time buy or pied-à-terre with the accommodation comprising a bright reception room with french doors onto a private west facing patio, kitchen/breakfast room, double bedroom with bay window, bathroom, 2.88m high ceilings, store cupboard, front garden and share in the freehold. The flat is located close to local parks, gastro pubs and Chiswick High Road's shops, cafes and restaurants. Transport links include Chiswick Park and Turnham Green tube stations, South Acton Overground station, local bus routes and the A4/M4 for routes in and out of London.

SITUATION



5-7 Turnham Green Terrace, Chiswick, London, W4 1RG

Tel 020 8747 8800

E-mail sales@whitmanandco.com

Website www.whitmanandco.com