



St Louis Road SE27
£1,400 pcm

0208 702 9888
pedderproperty.com

pedder



In general

- Split level maisonette
- Two bedrooms
- Modern Kitchen
- Gated development
- Neutrally decorated throughout

In detail

We are delighted to bring to the market this 2 bedroom split level maisonette within this impressive period building to let on St Louis Road, SE27.

Neutrally decorated throughout, the accommodation comprises good size reception, separate kitchen, two bedrooms and a modern bathroom, the kitchen having a range of modern wall and base units. There is a communal front garden.

St Louis Road offers easy access into The City and West End via nearby West Norwood station and Gipsy Hill station as well as bus connections into the neighbouring Herne Hill, Dulwich and Crystal Palace.

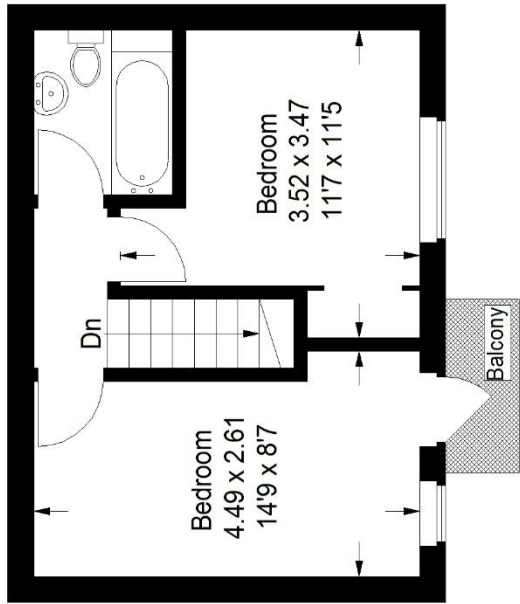
There are excellent amenities, schools and parks nearby with Brockwell Park to the north, Dulwich and Belair Park to the north east and both Norwood Park and Tivoli Park to the south.



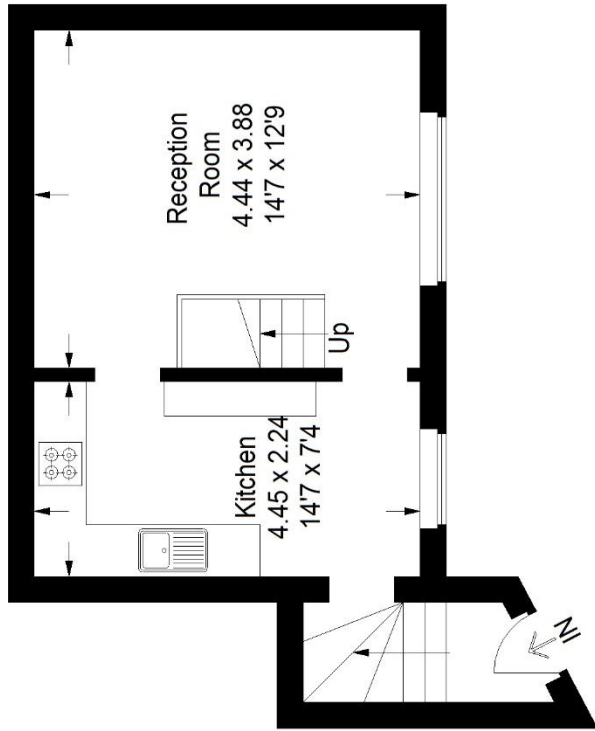
Floorplan

St Louis Road SE27

Approximate Gross Internal Area
First Floor = 31.6 sq m / 340 sq ft
Second Floor = 28.2 sq m / 304 sq ft
Total = 59.8 sq m / 644 sq ft



Second Floor



First Floor

Copyright www.pedderproperty.com © 2021
These plans are for representation purposes only as defined by RICS - Code of Measuring Practice. Not drawn to Scale. Windows and door openings are approximate. Please check all dimensions, shapes and compass bearings before making any decisions reliant upon them.

Score	Energy rating	Current	Potential
92+	A		
81-91	B		
69-80	C		
55-68	D	64 D	76 C
39-54	E		
21-38	F		
1-20	G		

Pedder Property Ltd trading as Pedder for themselves and for the vendor/landlord of this property whose agents they are, give notice that (1) these particulars do not constitute any part of an offer or contract, (2) all statements contained within these particulars are made without responsibility on the part of Pedder or the vendor/landlord, (3) whilst made in good faith, none of the statements contained within these particulars are to be relied upon as a statement of representation or fact, (4) any intending purchaser/tenant must satisfy him/herself by inspection or otherwise as to the correctness of each of the statements contained within these particulars, (5) the vendor/landlord does not make or give either Pedder or any person in their employment any authority to make or give representation or warranty whatsoever in relation to this property.