






Michleham Down, London N12 7JJ

WAYNE
& SILVER

Michleham Down, London N12 7JJ

A highly sought-after semi-detached family home (approx. 1,927 sqFt) situated in this desirable turning in Woodside park. The property has huge potential to extend in order to increase accommodation to the ground floor (subject to local planning consent). Set over three floors the property comprises of a large entrance hall, a large double reception room with separate kitchen, guest WC, 4 double bedrooms of which two feature en-suite bathrooms and dressing areas / built in storage plus a family bathroom. Further benefits include a large south facing garden with stunning green views, a separate modernised and converted garage/study, off street parking for 2 cars and an abundance of storage throughout. The property is conveniently located for Woodside Park Northern Line tube station, local shops, cafes, parkland and within the catchment area for Woodridge Primary School.



   EPC
4 3 1 D

Guide price: £1,150,000

Tenure: Freehold

Service Charge: Add text here

Local Authority: Barnet

Council Tax Band: G



Features include:

WAYNE
& SILVER



WAYNE
SILVER

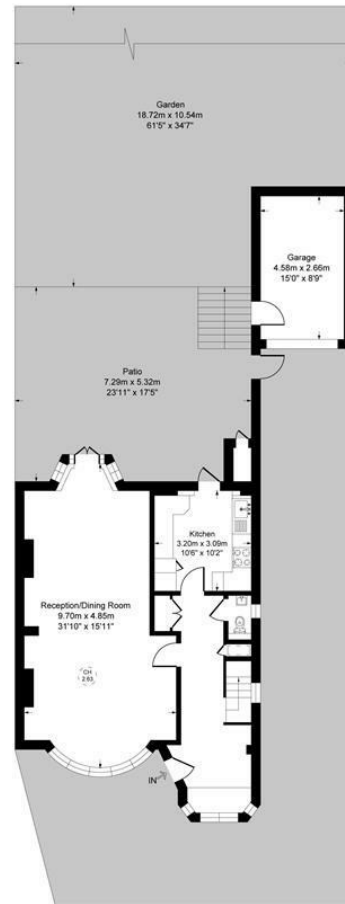


Michleham Down N12

Approximate Gross Internal Area = 166.8 sq m / 1796 sq ft

Garage Area = 12.1 sq m / 131 sq ft

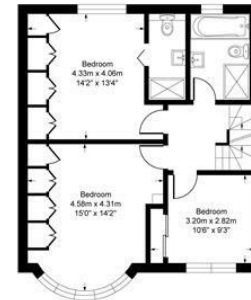
Total Area = 179.0 sq m / 1927 sq ft



Ground Floor



Second Floor



First Floor

This Plan is for layout guidance only. Not drawn to scale unless stated. Windows and door openings are approximate. Whilst every care is taken in the preparation of this plan, please check all dimensions, shapes and compass bearings before making any decisions reliant upon them.

41 Heath Street
Hampstead
London
NW3 6UA

We would be delighted to tell you more
020 7431 4488
info@wayne-silver.com

wayne-silver.com