



Westwood Hill SE26
£425,000

0208 702 9777
pedderproperty.com

pedder



In general

- Stunning first floor apartment
- High ceilings
- Vast reception room (16' x 15'8)
- 2 bedrooms
- Beautifully refurbished bathroom
- Utility cupboard
- Communal gardens
- Share of Freehold
- Close to Crystal Palace Park
- Great transport links

In detail

A beautifully presented, charming and characterful, two bedroom apartment, enviably located close to Crystal Palace Park.

Arranged across the first floor of an attractive, detached, Victorian build, the property offers a wealth of features, exceptional ceiling height and proportions and large sash windows allowing for plenty of natural light.

Comprising a spacious reception of 16' x 15'8, separate kitchen, two bedrooms and a stunning newly refurbished bathroom with high quality fittings and utility cupboard. To the rear is a large communal garden.

Westwood Hill is well placed for rail links at both Sydenham and Sydenham Hill stations, shopping facilities on both Sydenham High Street and Crystal Palace Triangle, as well as local leisure facilities.

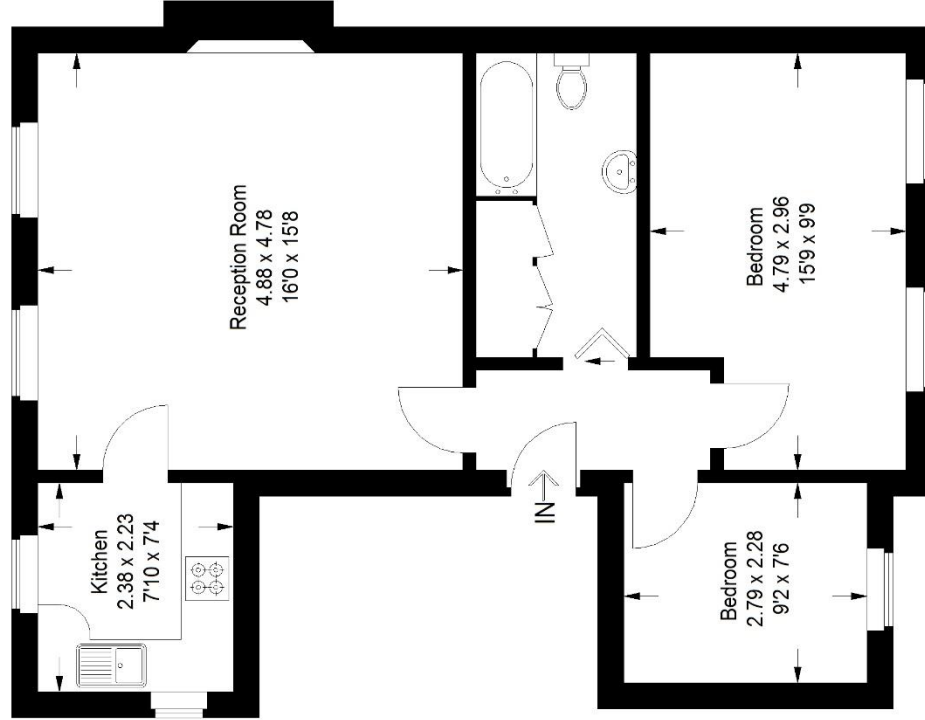
EPC - D



Floorplan

Westwood Hill SE26

Approximate Gross Internal Area
60.8 sq m / 654 sq ft



First Floor

Copyright www.pedderproperty.com © 2021

These plans are for representation purposes only
as defined by RICS - Code of Measuring Practice.

Not drawn to Scale. Windows and door openings are
approximate. Please check all dimensions, shapes and
compass bearings before making any decisions reliant upon them.

Score	Energy rating	Current	Potential
92+	A		
81-91	B		
69-80	C		
55-68	D	55 D	60 D
39-54	E		
21-38	F		
1-20	G		

Pedder Property Ltd trading as Pedder for themselves and for the vendor/landlord of this property whose agents they are, give notice that (1) these particulars do not constitute any part of an offer or contract, (2) all statements contained within these particulars are made without responsibility on the part of Pedder or the vendor/landlord, (3) whilst made in good faith, none of the statements contained within these particulars are to be relied upon as a statement of representation or fact, (4) any intending purchaser/tenant must satisfy him/herself by inspection or otherwise as to the correctness of each of the statements contained within these particulars, (5) the vendor/landlord does not make or give either Pedder or any person in their employment any authority to make or give representation or warranty whatsoever in relation to this property.