



Bloomfield Road, West Cheshunt



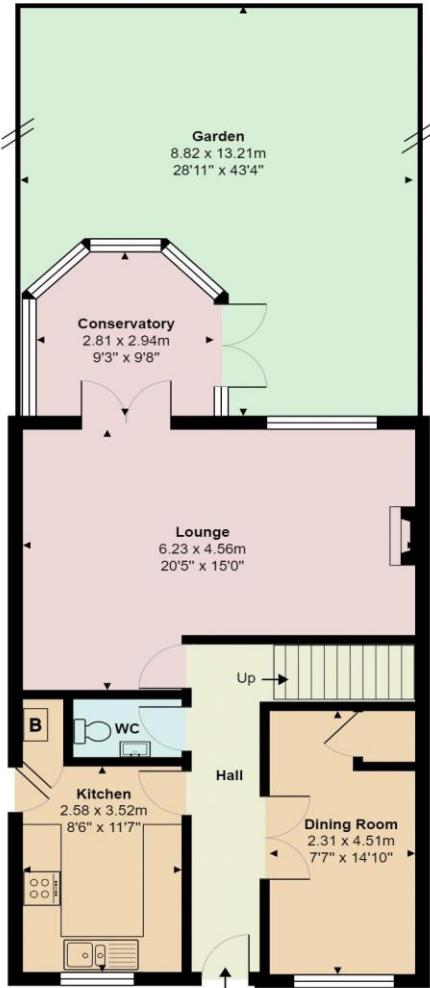
- QUIET TURNING
- 3 RECEPTION ROOMS
- 4 BEDROOMS
- EN-SUITE SHOWER ROOM
- FAMILY BATHROOM
- PLENTY OF OFF STREET PARKING
- CLOSE TO SHOPS
- VENDOR FOUND



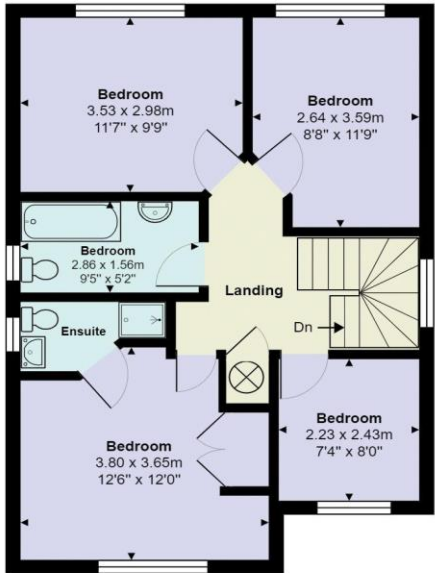
Bloomfield Road  
Cheshunt EN7 6WJ

Set in a quiet turning just off Hammond Street Road you will find this 4 bedroom detached family home. The property benefits from 3 reception rooms, 4 bedrooms and 2 bathrooms and lots of off-street parking. Accommodation consists of: Entrance hallway, living room/dining room, playroom, conservatory, kitchen and downstairs wc. Upstairs there are 4 bedrooms with the master bedroom having an en-suite shower, 3 further bedrooms and a family bathroom. The rear garden is mainly laid to lawn, side access.

Ideally situated for access to both Cheshunt and Cuffley station with their direct links to London Liverpool Street and London Moorgate. There is an excellent choice of schooling in the local area including Flamstead End JMI and Goffs Academy. Shops and local amenities are close by at the Brookfield Farm and Goffs Oak village centre and there is an abundance of countryside and woodland walks to be enjoyed just a short distance from the property.



Ground Floor  
Area: 65.8 m² ... 709 ft²



First Floor  
Area: 56.4 m² ... 607 ft²



Score	Energy rating	Current	Potential
92+	A		
81-91	B		
69-80	C		
55-68	D	66   D	80   C
39-54	E		
21-38	F		
1-20	G		



Bloomfield Road, Cheshunt, EN7 6WJ

Total Area: 122.2 m² ... 1316 ft² (excluding garden)

All measurements are approximate and for display purposes only