



149 Upper Richmond Road, Putney, London, SW15 2TX

t: 0208 788 8822

e: [putney@allanfuller.co.uk](mailto:putney@allanfuller.co.uk)

[www.allanfuller.co.uk](http://www.allanfuller.co.uk)

## Ringwood Gardens London, SW15

A bright three bedroom, terraced house, located within a peaceful, but handy position overlooking Richmond Park. This modern style house has been cleverly designed to ensure that every room has natural light and comprises of a bright reception room with direct access to the private patio garden, eat-in kitchen and a downstairs cloakroom on the ground floor, with three bedrooms and family bathroom on the first floor.

The property does require updating and benefits from well-kept communal gardens to both front and rear of the property, a garage en-bloc and no onward chain.

Ringwood Gardens is a small private development of modern houses, located just off Alton Road and within easy access to the A3, Wimbledon Common and Richmond Park.

Local town centres of Putney, Wimbledon, Sheen and Barnes are easily accessible by car and there are frequent bus services along Alton Road.

EPC - D



£495,000

Freehold



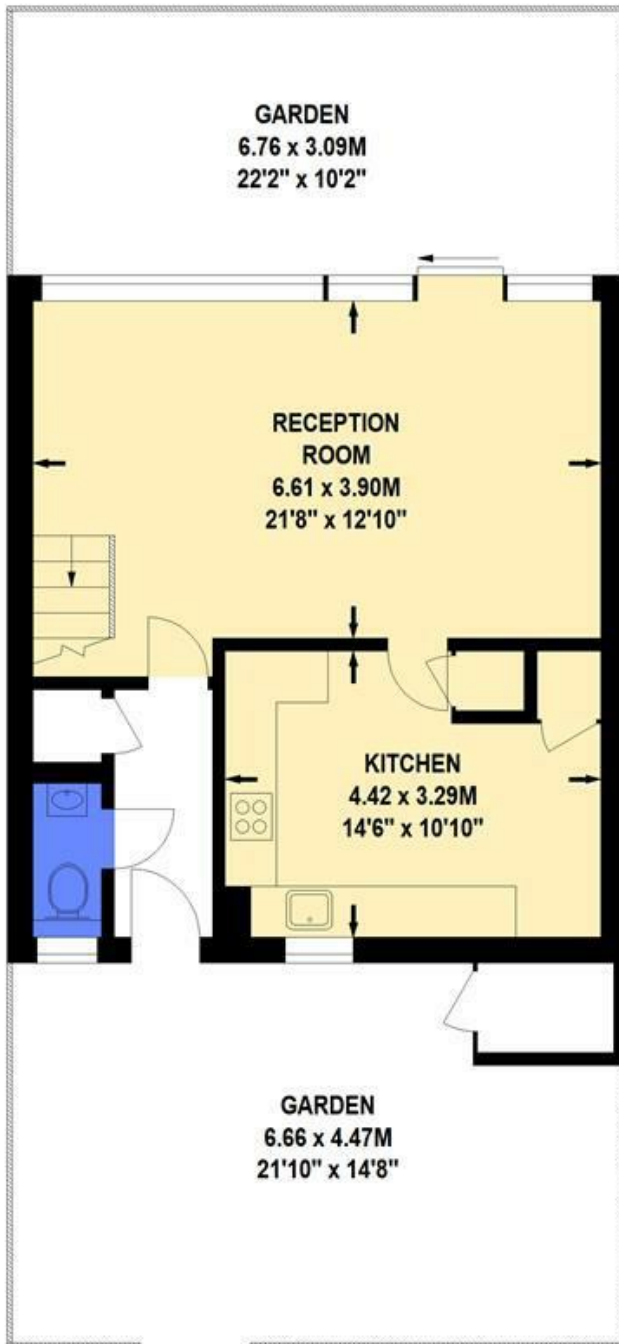




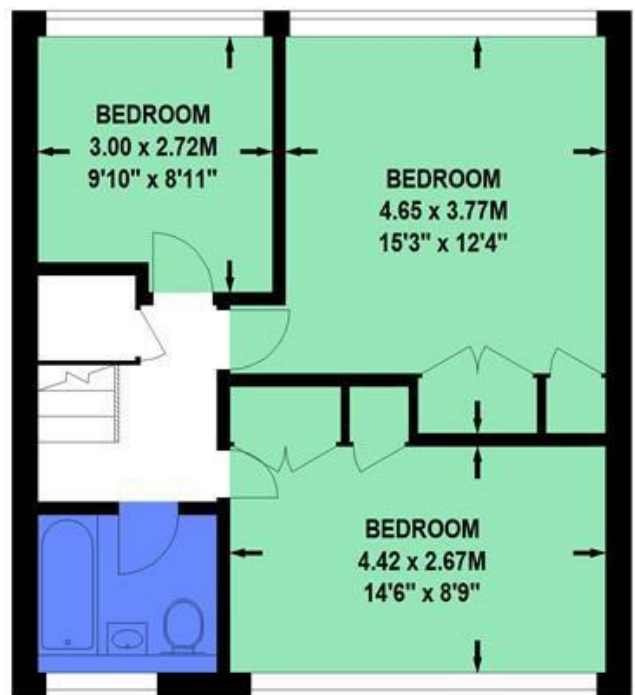
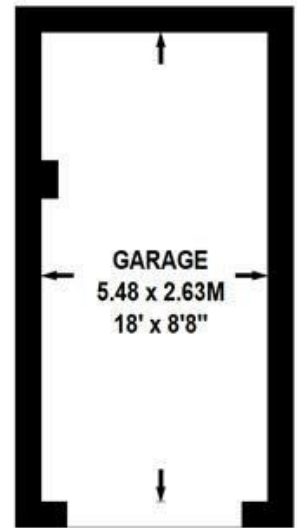


# Ringwood Gardens, SW15

Approximate Gross Internal Area 99 sq.m / 1066 sq.ft  
(Excluding Garage 15 sq.m / 161 sq.ft)



**Ground Floor**



**First Floor**

Floor Plan produced for Allan Fuller by Mays Floorplans © . Tel 020 3397 4594

Illustration for identification purposes only, not to scale

All measurements are maximum, and include wardrobes and window bays where applicable

With regards to any information supplied by us in relation to lease, ground rent and service charge it is essential that you have this information checked by your solicitor. We have transmitted information supplied to us by the vendor of the property but we have not been able to inspect the lease to check its accuracy. Please note that we have not tested any of the equipment or utilities at this property, nothing in these particulars shall be deemed a statement that the property is in good condition or otherwise nor that any of the services or facilities are in good working order. Measurements are approximate they were taken with a sonic tape, are as accurate as possible and usually measured from the widest point of any room. Description provided herein represents the opinion of the author, is given in good faith but should not be constructed as statements of fact. The particulars and photograph are for guidance only.