



Waylett Place SE27
£525,000

0208 702 9888
pedderproperty.com

pedder



In general

- Two bedrooms
- Two bathrooms
- Split level
- Over 1000 Sq Ft
- Excellent condition
- Chain Free
- EPC Rating A

In detail

Absolutely gorgeous split-level, two-bedroom, two bathroom modern apartment with private balcony and high ceilings in the heart of West Norwood.

Ideally located off Norwood Road for easy access into both Tulse Hill station and West Norwood station for the speedy 26-minute service to London Victoria, 23-mins to London Bridge.

Set amongst the trendy bars, restaurants, shops and amenities - including the brand new Picture house Cinema, library and Leisure Centre. Boasting over 1091 Sq Ft, the 2016 -built apartment has two double bedrooms with a large en-suite to the master and built-in storage.

A A21.4 x 16.7Sq. Ft open plan kitchen reception which includes high ceilings allowing natural light to flow throughout. The lower floor enjoys wide hallways, separate downstairs toilet and plenty of storage.

EPC: A



Floorplan

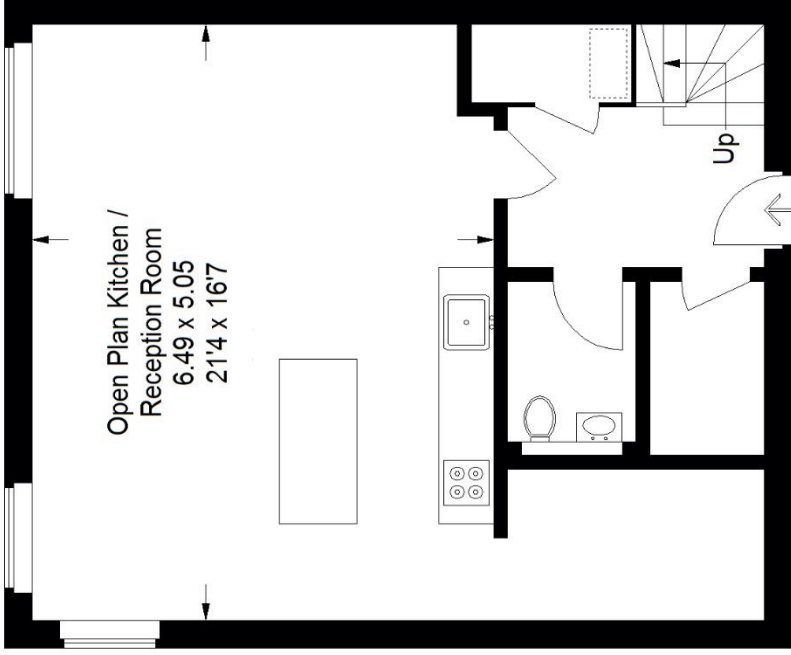
Score	Energy rating	Current	Potential
92+	A	101 JA	101 JA
81-91	B		
69-80	C		
55-68	D		
39-54	E		
21-38	F		
1-20	G		

Waylett Place SE27

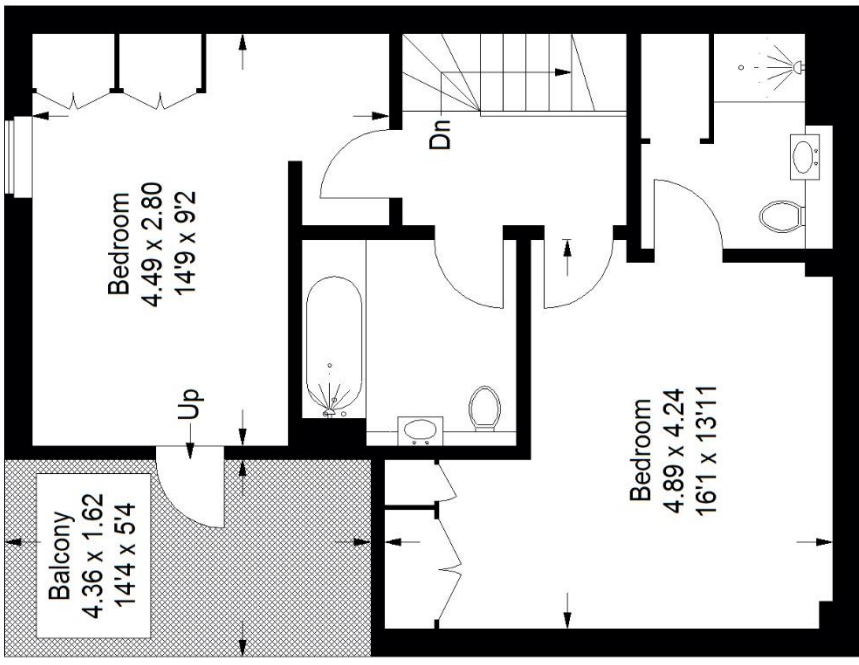
Approximate Gross Internal Area
First Floor = 52.2 sq m / 562 sq ft
Second Floor = 49.2 sq m / 529 sq ft
Total = 101.4 sq m / 1091 sq ft



 = Reduced headroom
 below 1.5 m / 5'0"



First Floor



Second Floor

Copyright www.pedderproperty.com © 2021

These plans are for representation purposes only as defined by RICS - Code of Measuring Practice. Not drawn to Scale. Windows and door openings are approximate. Please check all dimensions, shapes and compass bearings before making any decisions reliant upon them.

Pedder Property Ltd trading as Pedder for themselves and for the vendor/landlord of this property whose agents they are, give notice that (1) these particulars do not constitute any part of an offer or contract, (2) all statements contained within these particulars are made without responsibility on the part of Pedder or the vendor/landlord, (3) whilst made in good faith, none of the statements contained within these particulars are to be relied upon as a statement of representation or fact, (4) any intending purchaser/tenant must satisfy him/herself by inspection or otherwise as to the correctness of each of the statements contained within these particulars, (5) the vendor/landlord does not make or give either Pedder or any person in their employment any authority to make or give representation or warranty whatsoever in relation to this property.