

WAYNE & SILVER



20 Parklands Drive, London, N3 3HA

Asking Price £2,250,000





Asking Price £2,250,000

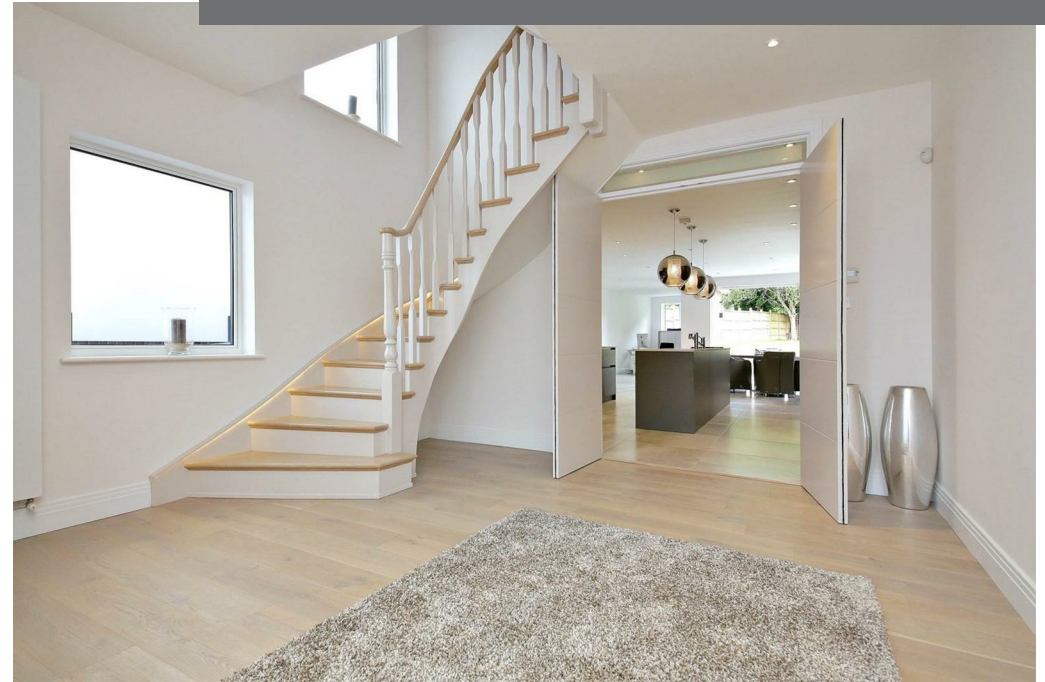
20 Parklands Drive

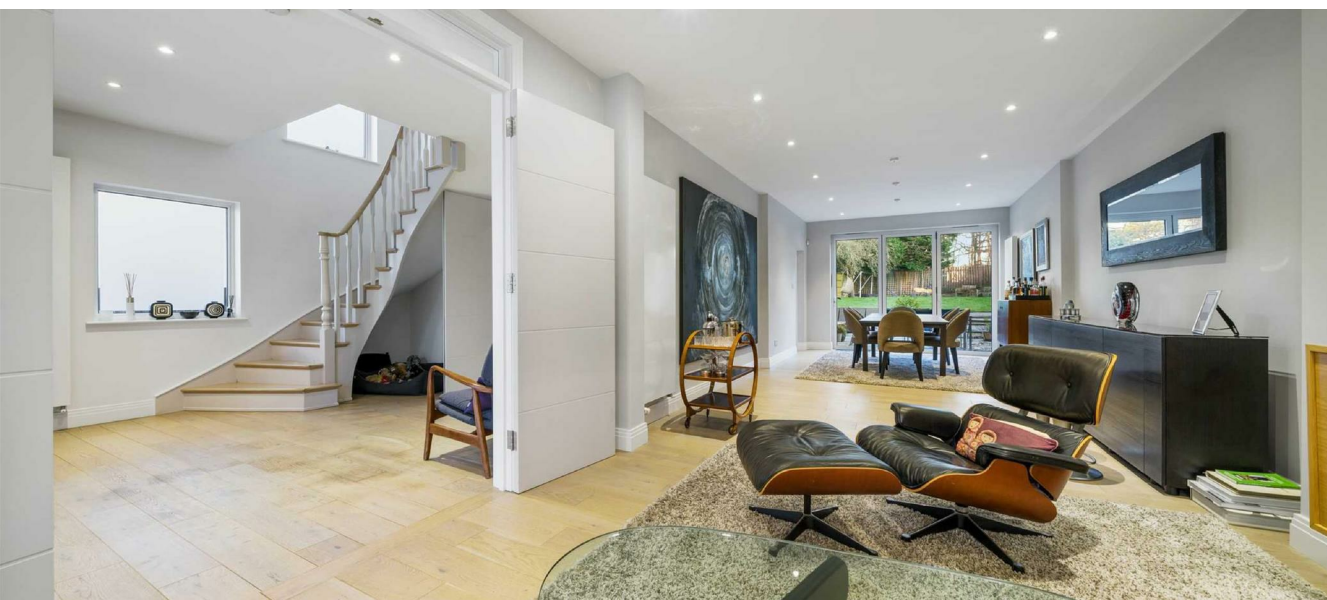
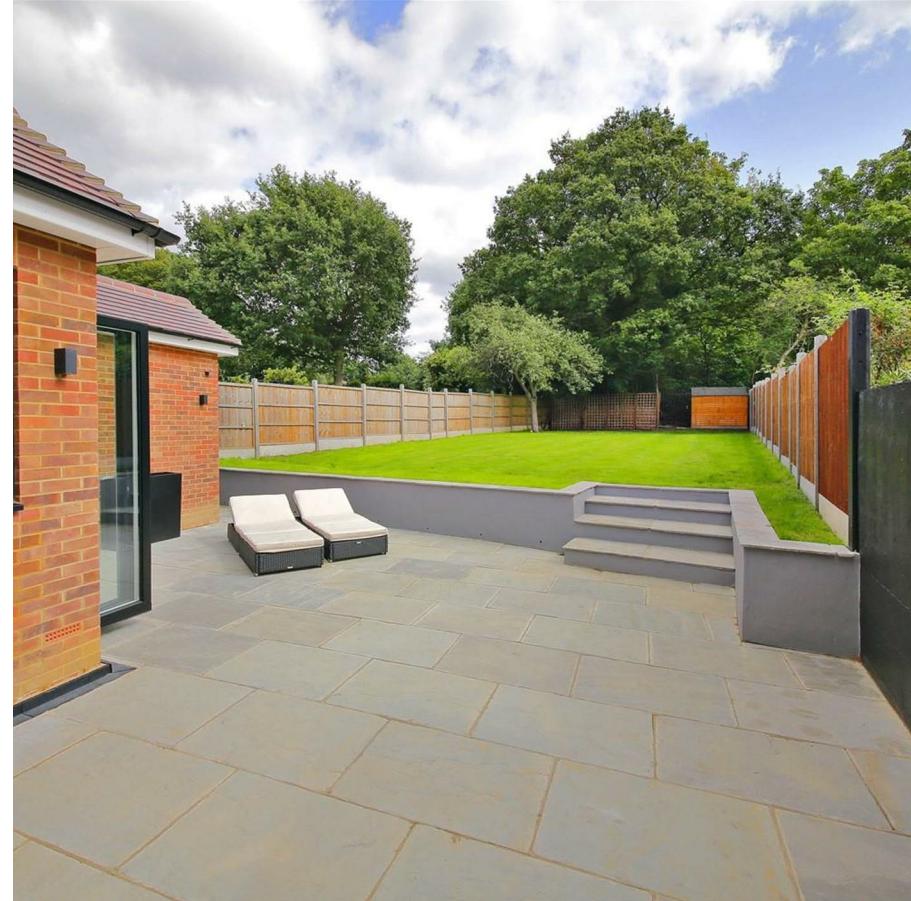
London, N3 3HA

A detached five bedroom residence situated in a highly sought after turning in Finchley. The property has been finished to the highest of standards throughout and provides approx 2,940 sq ft of accommodation over three floors.

The property offers spacious accommodation throughout and comprises of a large double reception room, an open plan kitchen with top of the range appliances and utility room, five double bedrooms (3 with en-suite), separate family bathroom and a 100ft garden. Further benefits include under floor heating, driveway for 3/4 cars and CCTV.

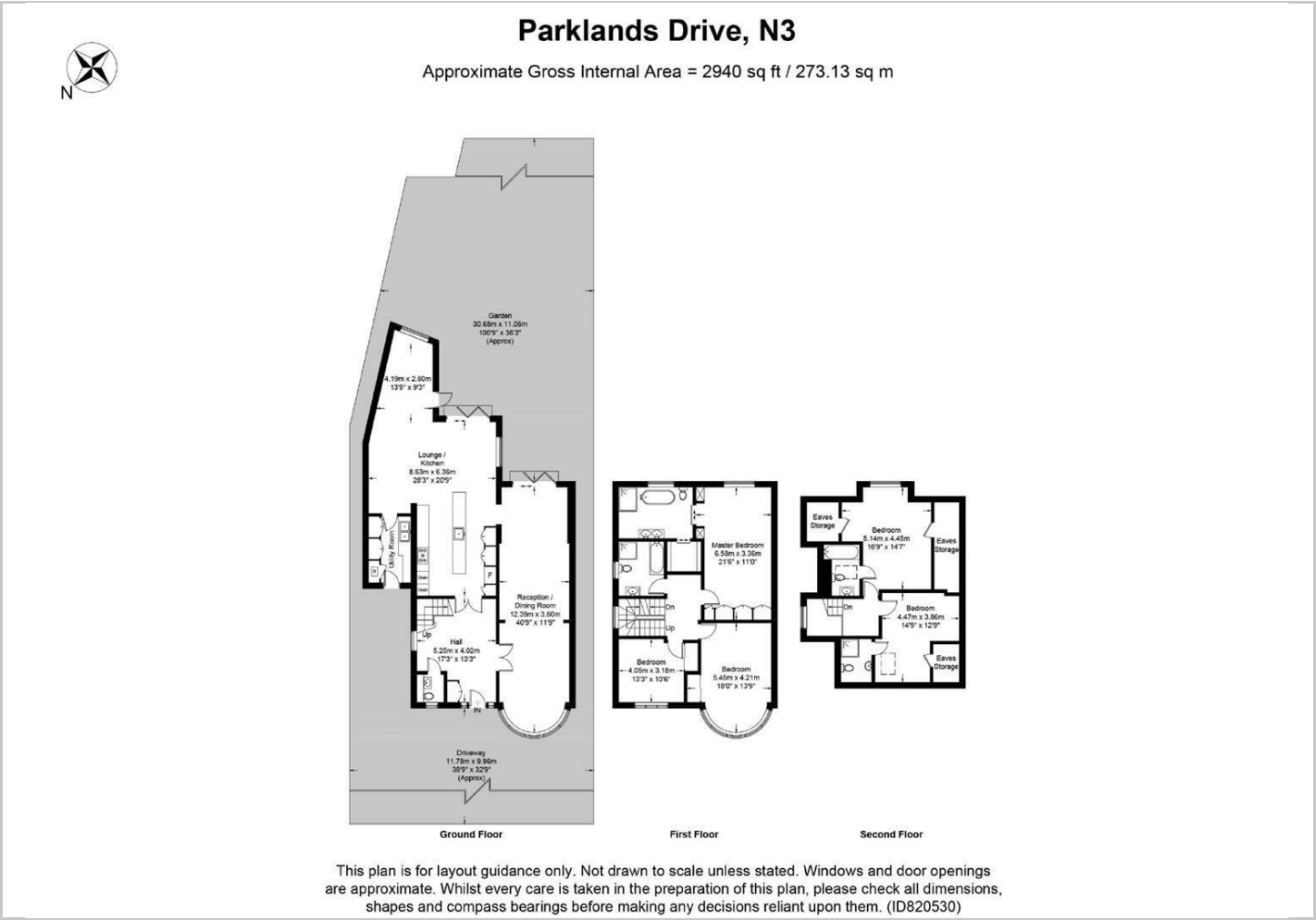
Parklands Drive is located off Crooked Usage, a short distance from all of the local amenities and travel links that both Finchley and Temple Fortune high streets afford.







Floor Plans



Viewing

Please contact our Hampstead Sales Office on 020 7431 4488 if you wish to arrange a viewing appointment for this property or require further information.

The particulars are set out as a general outline only for the guidance of intended purchasers or lessees, and do not constitute, any part of a contract. Nothing in these particulars shall be deemed to be a statement that the property is in good structural condition or otherwise nor that any of the services, appliances, equipment or facilities are in good working order. Purchasers should satisfy themselves of this prior to purchasing.

41 Heath Street, Hampstead, London, NW3 6UA
Tel: 020 7431 4488 Email: info@wayne-silver.com wayne-silver.com

Location Map



Energy Performance Graph

