



www.dpsestates.co.uk



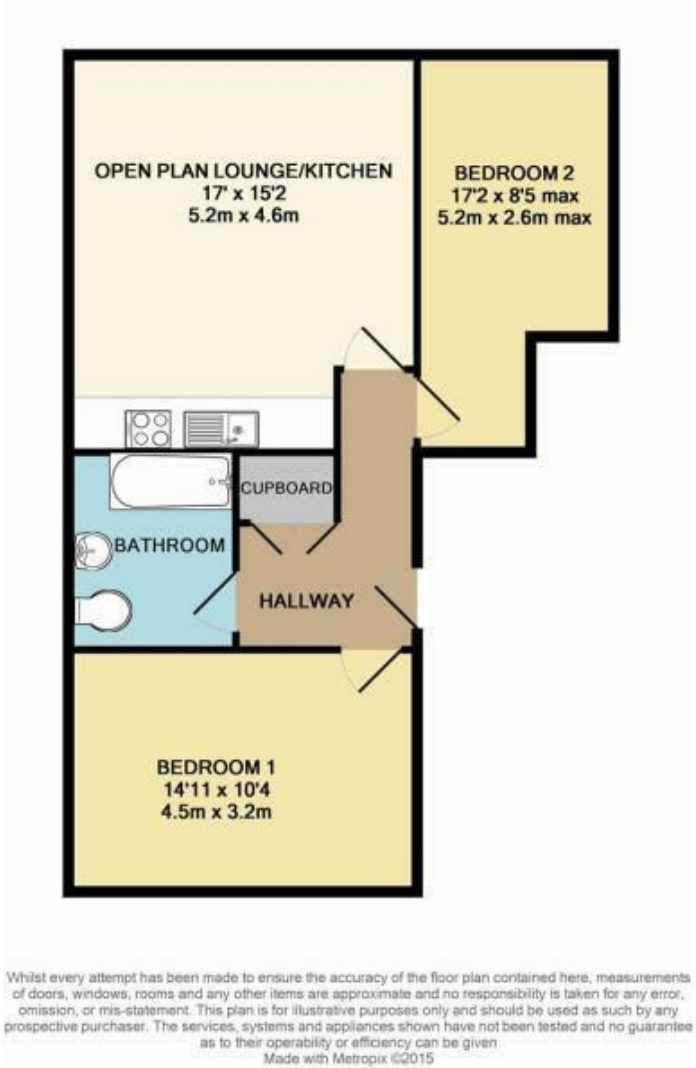
23 Maidstone Road, Norwich, NR1 1EA

£1,350 Per month

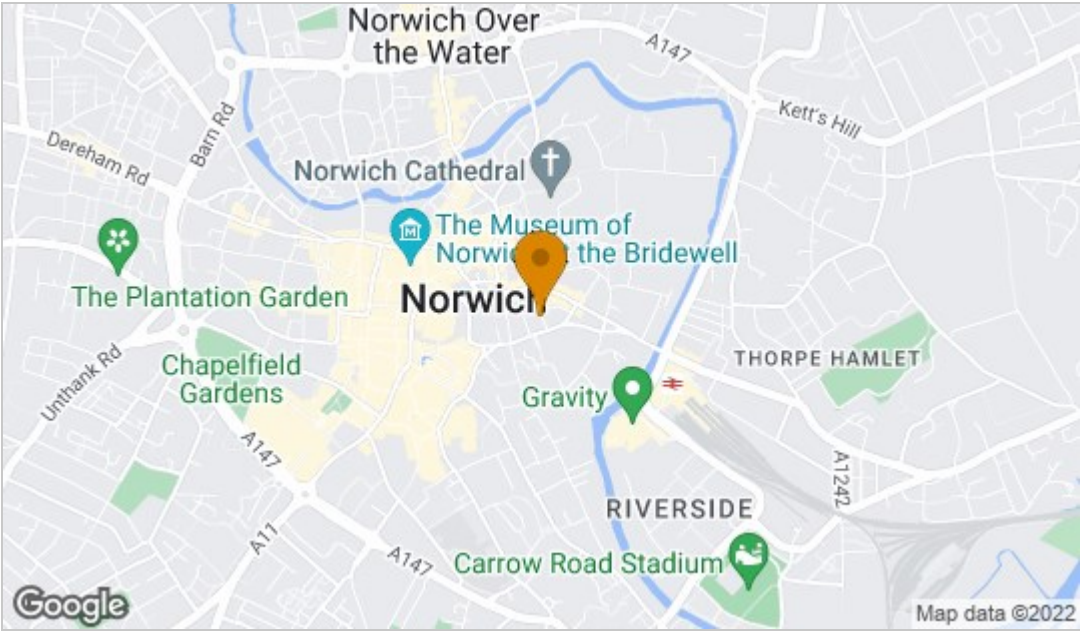
Fully furnished two bedroom apartment situated in the heart of the City Centre. Boasting an open plan kitchen/ling space with vaulted ceilings, two double bedrooms, large bathroom, laundry cupboard and is let with secure under ground parking.



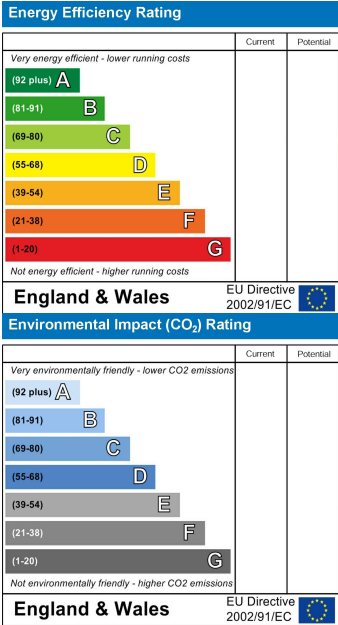
Floor Plan



Area Map



Energy Efficiency Graph



These particulars, whilst believed to be accurate are set out as a general outline only for guidance and do not constitute any part of an offer or contract. Intending purchasers should not rely on them as statements of representation of fact, but must satisfy themselves by inspection or otherwise as to their accuracy. No person in this firm's employment has the authority to make or give any representation or warranty in respect of the property.