



## Mulberry House, London, W4 3UH

A newly renovated two bedroom flat occupying the ground floor of this beautiful period detached house situated within a short walking distance of the River Thames with its very popular pubs, restaurants and eating houses and delightful riverside walks along the original towpath. The accommodation provides: two large bedrooms each with en-suite. Lovely new fitted kitchen and gas fired central heating. Local transport links include both Kew Bridge & Chiswick mainline stations (20 minutes to Waterloo) numerous local bus routes with convenient vehicular access via A4/M4 to Central London, Heathrow & The West. The property is available immediately and is available furnished. All Bills Included +£250pcm

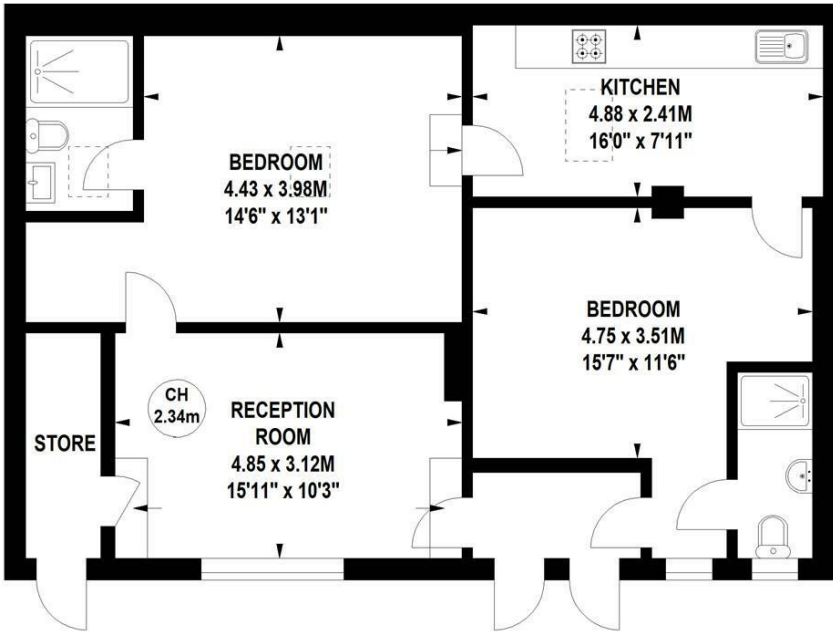
- Two large bedroom
- Newly renovated
- 2 en-suite bedrooms
- Beautiful Grove Park Location
- Good for transport links
- Furnished
- CPZ Parking
- All Bills Included +£250pcm
- Available Now

**£1,750 Per Month**

# Mulberry House, W4

Approximate gross internal area  
81.38 sq m / 876 sq ft

Key :  
CH - Ceiling Height



## Ground Floor

Not to scale, for guidance only and must not be relied upon as a statement of fact.  
All measurements and areas are approximate only

Energy Efficiency Rating		
	Current	Potential
Very energy efficient - lower running costs		
(92 plus) A		
(81-91) B		
(69-80) C		
(55-68) D		
(39-54) E		
(21-38) F		
(1-20) G		
Not energy efficient - higher running costs		
England & Wales		
EU Directive 2002/91/EC		

Environmental Impact (CO <sub>2</sub> ) Rating		
	Current	Potential
Very environmentally friendly - lower CO <sub>2</sub> emissions		
(92 plus) A		
(81-91) B		
(69-80) C		
(55-68) D		
(39-54) E		
(21-38) F		
(1-20) G		
Not environmentally friendly - higher CO <sub>2</sub> emissions		
England & Wales		
EU Directive 2002/91/EC		

5-7 Turnham Green Terrace, Chiswick, London, W4 1RG  
Tel 020 8747 8800  
E-mail [lettings@whitmanandco.com](mailto:lettings@whitmanandco.com)  
Website [www.whitmanandco.com](http://www.whitmanandco.com)