

Greyhound Road

Hammersmith, London, W6

 LAWSONRUTTER

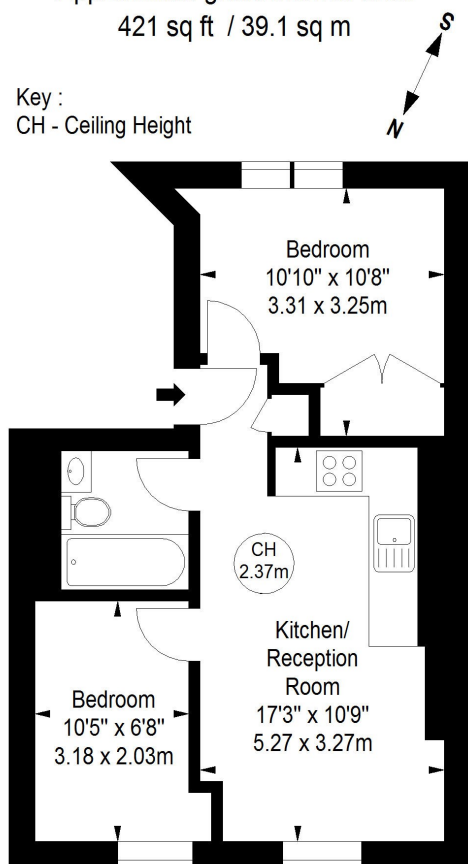




Greyhound Road, W6

Approximate gross internal area
421 sq ft / 39.1 sq m

Key :
CH - Ceiling Height



Second Floor

Illustration For Identification Purposes Only. Not To Scale
*Floorplan Drawn According To RICS Guidelines

Greyhound Road

Hammersmith, London, W6

Price Guide: £379,950

A very well presented, second floor two bedroom apartment that is not to be missed. Offering a light and airy open plan kitchen/reception room with fully integrated appliances and a modern white bathroom suite, this charming property is the ideal home for a first time buyer or as a buy to let investment.

The property is located within a 10 minute walk of Hammersmith and Barons Court underground stations and within a stone's throw away from the River Thames towpath and all the local bars and shops on the Fulham Palace Road. Offered with no chain and a long lease early viewings are highly recommended.

Very well presented two bedroom apartment

Light & airy open plan kitchen/reception room with integrated appliances

Ideal first time buy/rental investment | Short walk to Hammersmith & Barons Court stations

Long lease | Leasehold | 421 Sq. Ft. (39.1 Sq. M.)

All viewings by appointment
through our **Hammersmith Office**:

T: 020 7385 7000

E: hammersmith@lawsonrutter.com

192 Fulham Palace Road, London
W6 9PA

In accordance with the Property Misdescription Act 1991, we wish to emphasise that the information given in these particulars is intended to help you decide whether you wish to view this property. Whilst every care is taken to ensure the accuracy of these particulars please note that all measurements are approximate and we are, for the accuracy of other information, reliant on what the seller has provided. We strongly recommend that you rely on your own inspections and those of your advisors to establish the details of any aspects which are of particular importance. Please note that we have not undertaken any survey of the property or the appliances within it and the buyer must rely on their own investigations prior to exchange of contracts.

