



149 Upper Richmond Road, Putney, London, SW15 2TX

t: 0208 788 8822

e: putney@allanfuller.co.uk

www.allanfuller.co.uk

## Westleigh Avenue London, SW15

Situated in one of Putney's most sought-after roads, just moments from Putney High Street and Putney Heath, this two bedroom, purpose-built apartment is offered with no onward chain.

Located on the raised ground floor and offering spacious accommodation throughout, with a dual aspect reception room, modern kitchen with granite worktops, two bedrooms with built in storage to the main bedroom and modern bathroom with under-floor heating.

The flat also benefits from ample built-in storage as well as an external separate storage rooms for an additional rent, access to communal gardens and four off street parking permits.

Located in an excellent position for access to Putney High Street with brilliant commuter services from Putney train station, East Putney tube station which are all within 0.7 miles as well as the green open spaces of Putney Heath. EPC – C Council Tax: Band D



**Guide Price £450,000**

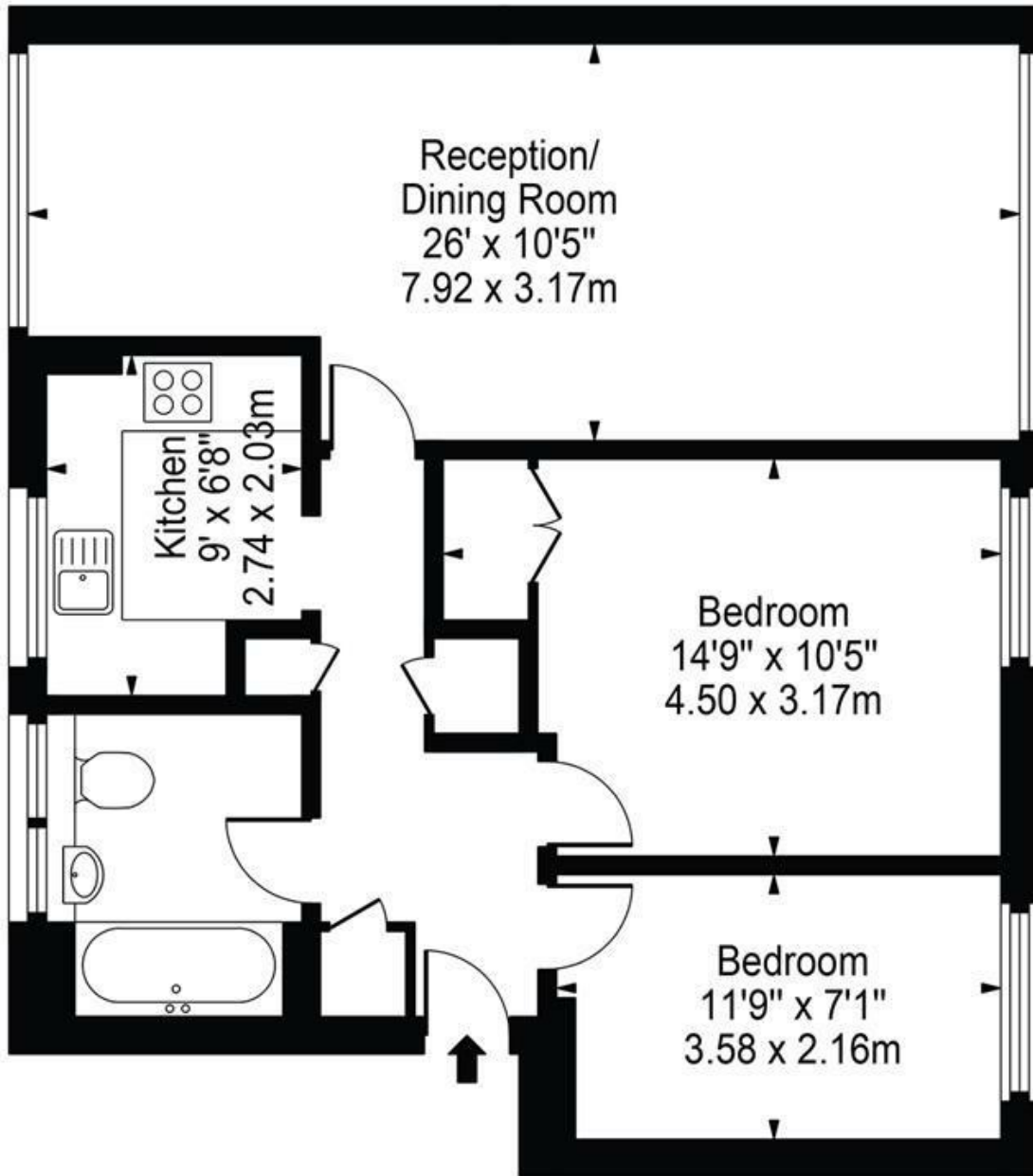
**Leasehold**





# Westleigh Avenue, SW15

Approx. Gross Internal Area 694 Sq Ft - 64.47 Sq M



Ground Floor

ALLAN FULLER  
EST. 1983

©

For Illustration Purposes Only - Not To Scale Floor Plan by Mira Nikolova Photography

This floor plan should be used as a general outline for guidance only and does not constitute in whole or in part an offer or contract. Any intending purchaser or lessee should satisfy themselves by inspection, searches, enquiries and full survey as to the correctness of each statement. Any areas, measurements or distances quoted are approximate and should not be used to value a property or be the basis of any sale or let.

With regards to any information supplied by us in relation to lease, ground rent and service charge it is essential that you have this information checked by your solicitor. We have transmitted information supplied to us by the vendor of the property but we have not been able to inspect the lease to check its accuracy. Please note that we have not tested any of the equipment or utilities at this property, nothing in these particulars shall be deemed a statement that the property is in good condition or otherwise nor that any of the services or facilities are in good working order. Measurements are approximate they were taken with a sonic tape, are as accurate as possible and usually measured from the widest point of any room. Description provided herein represents the opinion of the author, is given in good faith but should not be constructed as statements of fact. The particulars and photographs are for guidance only.