



Red Post Hill, SE24
£950,000

020 8702 8111
[pedderproperty.com](https://www.pedderproperty.com)

pedder



In general

- An attractive 3 bedroom semi-detached house situated in this highly sought after residential road just a short distance from Dulwich Village and Herne Hill.
- Extended and upgraded to a high standard
- 3 bedrooms
- Large reception room, study/2nd reception room
- Open-plan kitchen/dining room
- Modern bathroom, downstairs cloakroom
- Lovely 55' south facing rear garden
- Beautifully presented throughout
- Highly sought after location

In detail

An attractive 3-bedroom semi-detached house situated in this highly sought-after residential road just a short distance from Dulwich Village and Herne Hill.

This lovely property has been extended on the ground floor and upgraded to a high standard creating a very well presented interior. Situated within the popular "Homes for Heroes" development, the property comprises of 3 bedrooms, large reception room, study/2nd reception room, open-plan kitchen/dining room, downstairs cloakroom and a modern bathroom. Externally to the rear there is a delightful south facing rear garden measuring 55'.

The property is well located for access to nearby Herne Hill and Dulwich Village with their excellent schools, popular parks, numerous cafes and restaurants. Rail links to central London are from nearby North Dulwich (London Bridge) and Herne Hill (London Victoria/Blackfriars via Thameslink). Local bus stops are also moments from the front door. (Route P4 to Brixton & Lewisham and 42 to Liverpool St).

Internal viewing of this beautifully presented property is advised.

EPC: TBC | Council Tax Band: D | Leasehold



Floorplan

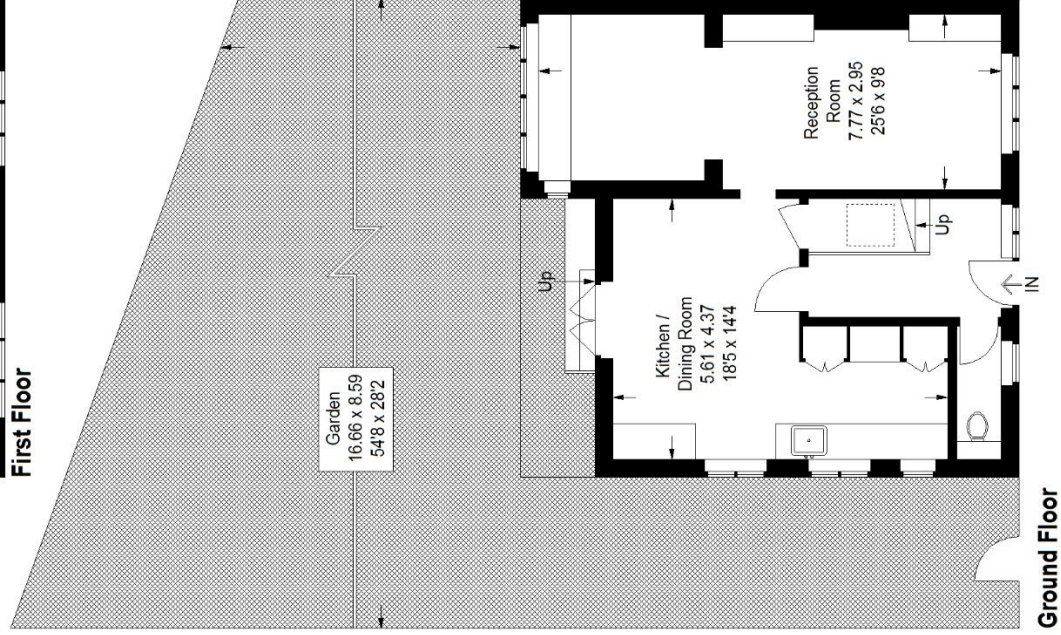
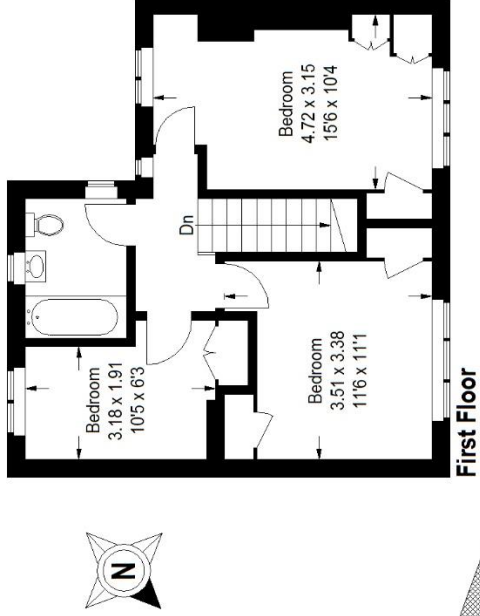
Red Post Hill, SE24

Approximate Gross Internal Area

Ground Floor = 53.1 sq m / 572 sq ft

First Floor = 44.7 sq m / 481 sq ft

Total = 97.8 sq m / 1053 sq ft



..... = Reduced headroom below 1.5 m / 5'0"

Copyright www.pedderproperty.com © 2022
These plans are for representation purposes only as defined by RICS - Code of Measuring Practice. Not drawn to Scale. Windows and door openings are approximate. Please check all dimensions, shapes and compass bearings before making any decisions reliant upon them.

Pedder Property Ltd trading as Pedder for themselves and for the vendor/landlord of this property whose agents they are, give notice that (1) these particulars do not constitute any part of an offer or contract, (2) all statements contained within these particulars are made without responsibility on the part of Pedder or the vendor/landlord, (3) whilst made in good faith, none of the statements contained within these particulars are to be relied upon as a statement of representation or fact, (4) any intending purchaser/tenant must satisfy him/herself by inspection or otherwise as to the correctness of each of the statements contained within these particulars, (5) the vendor/landlord does not make or give either Pedder or any person in their employment any authority to make or give representation or warranty whatsoever in relation to this property.