



Dulwich Wood Avenue SE19
£325,000

0208 702 9333
pedderproperty.com

pedder



In general

- No onward chain
- Garage
- Top floor
- Pleasant outlook
- Long lease
- Juliette balcony
- Well placed for transport links

In detail

A light and bright top floor apartment forming a popular low rise development on the sought after Dulwich Estate moments from Gipsy Hill station and various amenities.

This property is available for sale with no onward chain and offers a blank canvas for a new owner to make their own mark.

The elevated position benefits from pleasant views overlooking Long Meadow from a Juliette balcony, which is ideal on sunny days. Other highlights include a separate kitchen, fitted bedroom storage, a garage, and a long lease.

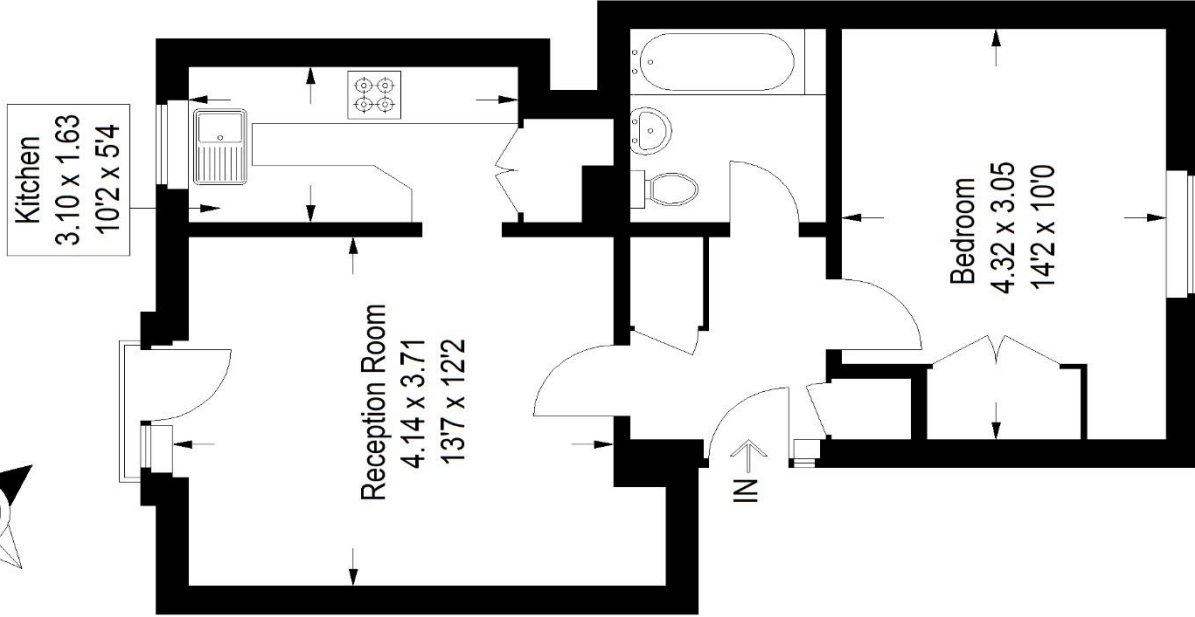
Dulwich Wood Avenue is positioned on the fringes of Crystal Palace / Dulwich Village and enables ease of access to shopping and leisure options at Gipsy Parade, the Crystal Palace Triangle, and West Dulwich.

EPC: E



Floorplan

Hunters Meadow SE19
Approximate Gross Internal Area
45.3 sq m / 488 sq ft



Second Floor

Copyright www.pedderproperty.com © 2021
These plans are for representation purposes only as defined by
RICS - Code of Measuring Practice. Not drawn to Scale.
Windows and door openings are approximate.
Please check all dimensions, shapes and compass
bearings before making any decisions reliant upon them.

Score	Energy rating	Current	Potential
92+	A		
81-91	B		
69-80	C		
55-68	D		
39-54	E		
21-38	F		
1-20	G		

51 E	77 C
--------	--------

Pedder Property Ltd trading as Pedder for themselves and for the vendor/landlord of this property whose agents they are, give notice that (1) these particulars do not constitute any part of an offer or contract, (2) all statements contained within these particulars are made without responsibility on the part of Pedder or the vendor/landlord, (3) whilst made in good faith, none of the statements contained within these particulars are to be relied upon as a statement of representation or fact, (4) any intending purchaser/tenant must satisfy him/herself by inspection or otherwise as to the correctness of each of the statements contained within these particulars, (5) the vendor/landlord does not make or give either Pedder or any person in their employment any authority to make or give representation or warranty whatsoever in relation to this property.