



## Hendon Way, Golders Green, NW2

£290 Per week

 2 Bedroom |  1 Reception |  2 Bathroom |  null

\*A video tour available\*

Rockstone London is delighted to offer this beautiful and newly decorated 2 double bedroom apartment on the first of a house conversion in the Golders Green / Child's Hill area. The flat offers 2 bedrooms (one double room and one single), bright living room with an open plan kitchen, wooden floors throughout with modern décor and furnishings. There is also a fully tiled bathroom, off street parking for 1 car. Hendon Way is located close to local shops and amenities on Cricklewood Lane and Finchley Road, while all transport links are within easy reach with Cricklewood Thames Link and Golders Green tube station both a short walk away.

Available now and offered furnished.

- Newly decorated 2 bedroom apartment
- Bright reception
- An open plan kitchen
- Fully tiled bathroom
- Off street parking for 1 car
- Modern decor
- Recently repainted
- Double glazed windows
- No Admin Fees For Tenants
- Video Tour Available

Contact us about this property

281A Finchley Road, London, NW3 6ND

E: [info@rockstone.london](mailto:info@rockstone.london)

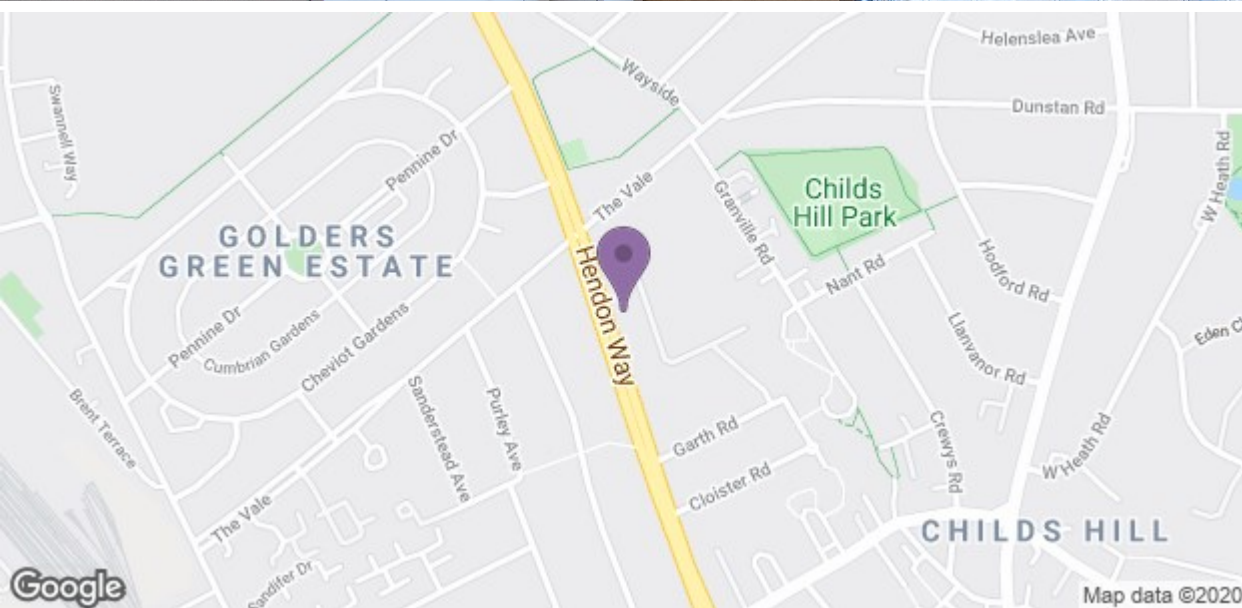
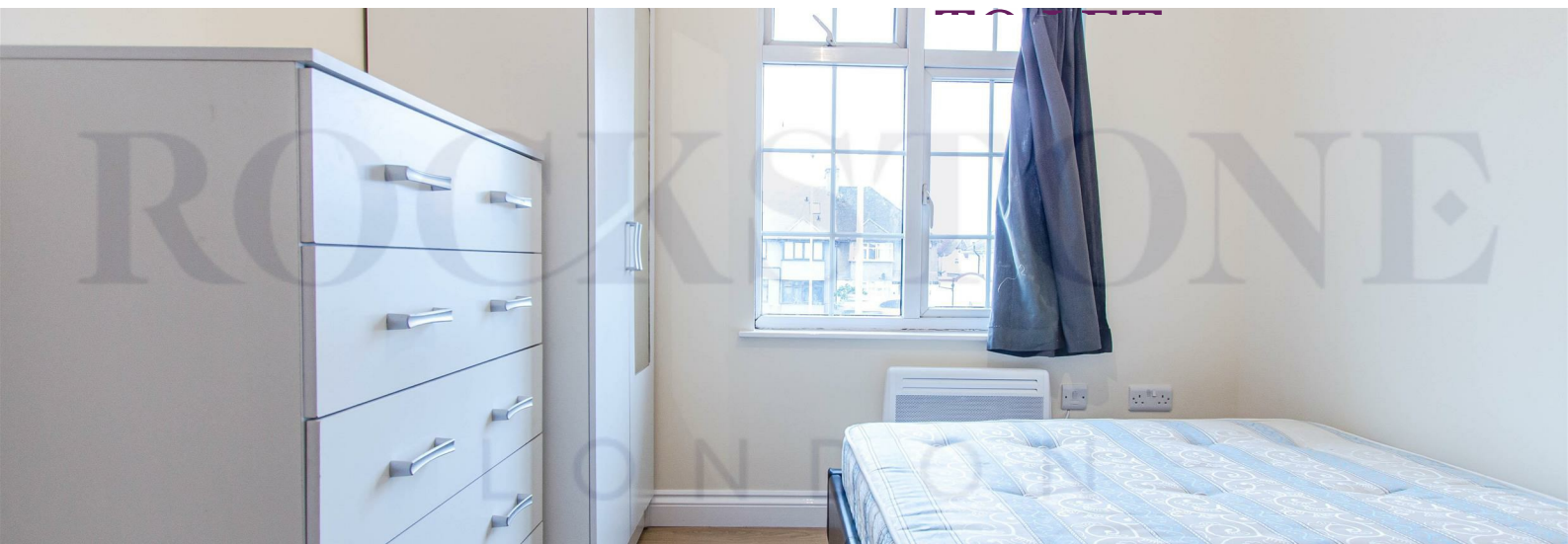
T: 02034905950

[www.rockstone.london](http://www.rockstone.london)

# ROCKSTONE

L O N D O N

# TO LET



Energy Efficiency Rating		
	Current	Potential
Very energy efficient - lower running costs		
(92 plus) <b>A</b>		
(81-91) <b>B</b>		
(69-80) <b>C</b>		
(55-68) <b>D</b>		
(39-54) <b>E</b>		
(21-38) <b>F</b>		
(1-20) <b>G</b>		
Not energy efficient - higher running costs		
England & Wales EU Directive 2002/91/EC		
Environmental Impact (CO <sub>2</sub> ) Rating		
	Current	Potential
Very environmentally friendly - lower CO <sub>2</sub> emissions		
(92 plus) <b>A</b>		
(81-91) <b>B</b>		
(69-80) <b>C</b>		
(55-68) <b>D</b>		
(39-54) <b>E</b>		
(21-38) <b>F</b>		
(1-20) <b>G</b>		
Not environmentally friendly - higher CO <sub>2</sub> emissions		
England & Wales EU Directive 2002/91/EC		

Contact us about this property  
281A Finchley Road, London, NW3 6ND  
E: [info@rockstone.london](mailto:info@rockstone.london)  
T: 02034905950

[www.rockstone.london](http://www.rockstone.london)

