



18 Old Oak Common Lane
Acton
London
W3 7EL
T: 020 8749 9798
E: sales@churchillmathesons.com
www.churchillmathesons.com

Churchill&Mathesons

Clock Tower Road, Isleworth, London TW7 6DT

£5,000 Per Calendar Month



KEY FEATURES:

- Excellent Location
- Transport Links in the Area
- 9 Parking Spaces Allocated
- Approx. 5000sqft of Area
- £60,000pa+VAT
- Located in Isleworth Industrial Area
- M & F Toilets
- Kitchenette
- Ground Floor & Mezzanine

Accommodation:

The unit comprises of a ground floor space and a mezzanine level, which was installed by the tenants.

Total Area of approximately 5000sqft.

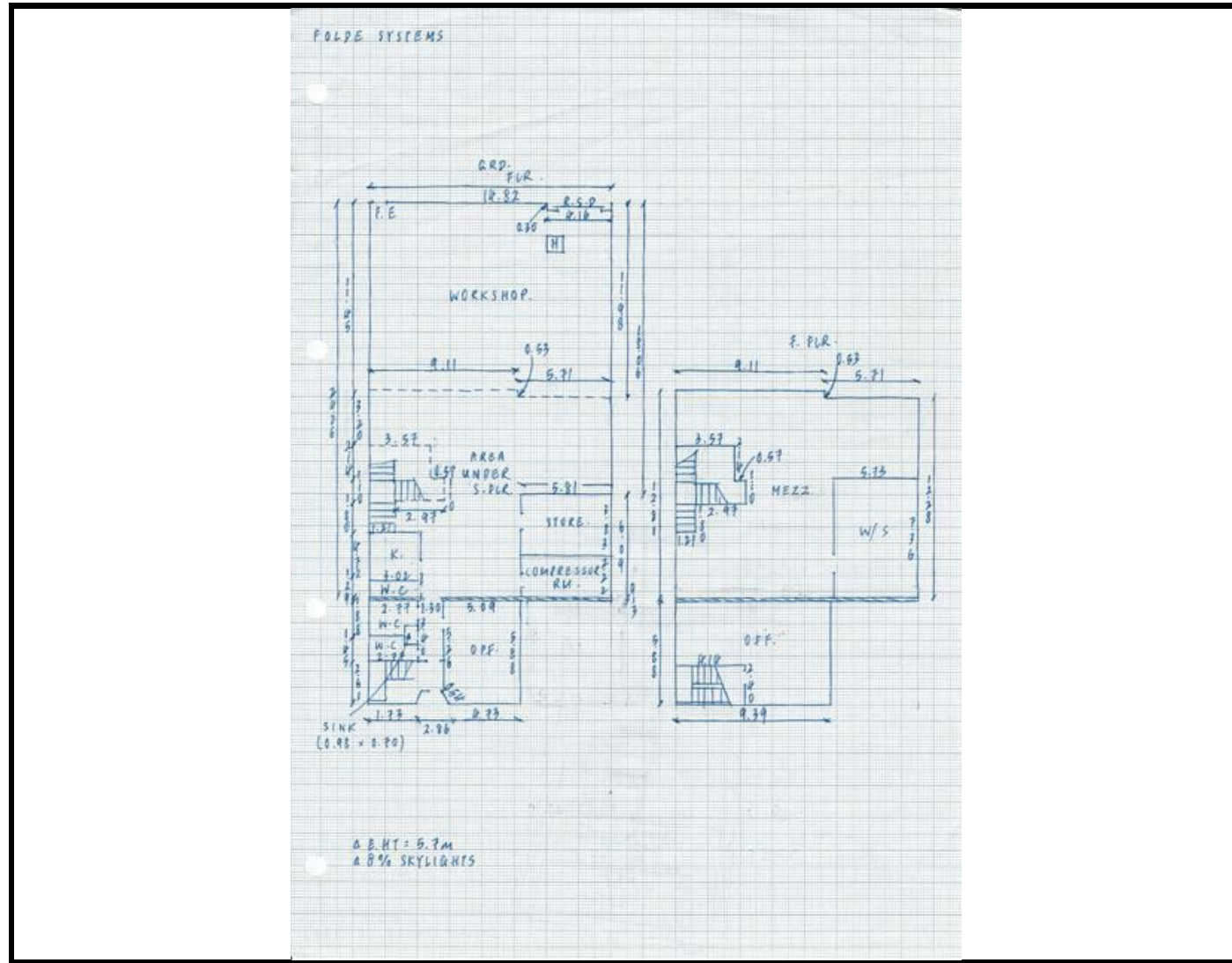
Amenities:

- Allocated parking for 9 cars minimum
- 3 Phase Electric Power
- 24-hour access
- M & F Toilets, Disabled Toilet & Kitchen
- 2 Private Offices

Location:

The property is prominently positioned on Clock Tower Road which is located at the centre of the Isleworth industrial estate. This location has excellent access to Richmond, Twickenham, Brentford, A4 and A316. There are also a number of transport links around the area which includes Isleworth train station (15 min walk) which serves the South Western Railway.

For more information please enquire within.



Energy Efficiency Rating

	Current	Potential
Very energy efficient - lower running costs		
(92 plus) A		
(81-91) B		
(69-80) C		
(55-68) D		
(39-54) E		
(21-38) F		
(1-20) G		
Not energy efficient - higher running costs		
England & Wales	EU Directive 2002/91/EC	

Environmental Impact (CO₂) Rating

	Current	Potential
Very environmentally friendly - lower CO ₂ emissions		
(92 plus) A		
(81-91) B		
(69-80) C		
(55-68) D		
(39-54) E		
(21-38) F		
(1-20) G		
Not environmentally friendly - higher CO ₂ emissions		
England & Wales	EU Directive 2002/91/EC	

Whilst every effort is made to give a fair description, the accuracy of these particulars is not guaranteed, neither do they constitute an offer or contract.

CHURCHILL ESTATE AGENTS have not tested any apparatus, equipment, fitting or services and so cannot verify that they are in working order. The buyer is advised to obtain verification from their solicitor or surveyor. Measurements are correct to within +/- 6 A sonic tape is used. None of the statements contained in these particulars or any of our properties are to be relied upon as a representation of fact.