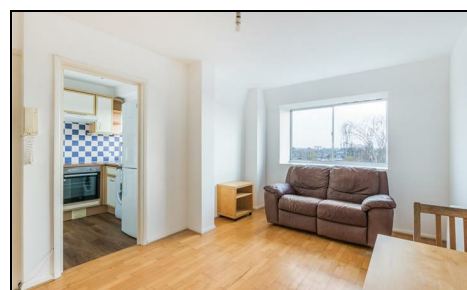


**110 Worple Road
Wimbledon, SW19 4JB**

£330,000 Leasehold



**Top Floor one bed flat with a garage, large communal gardens and amazing south facing views.
Double Bedroom, Reception room with amazing views, fitted Kitchen also with south facing
views**

**Bathroom, very long lease. Located in the convenient position between Wimbledon & Raynes
Park Centres**

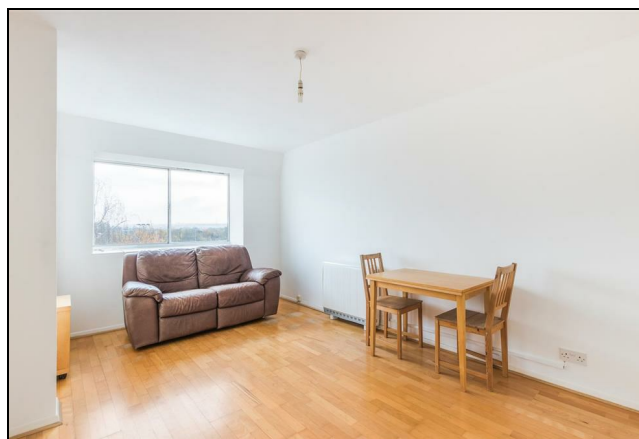
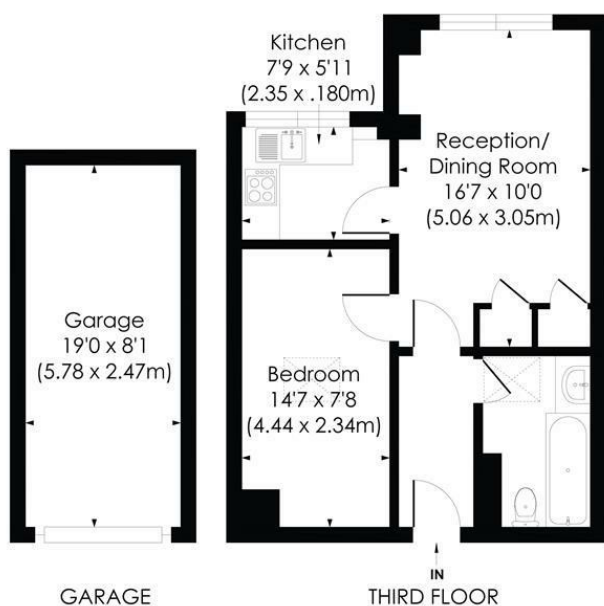
Ideal First time buy or buy to let.

STRET福德 COURT, SW19

Approx. Gross Internal Floor Area

432 Sq. ft/40.13 Sq. m Excluding Garage

154 Sq. ft/14.28 Sq. m Garage



pixangle
PROPERTY MARKETING

© Pixangle Property Marketing Ltd. info@pixangle.com Tel: 0208 870 2118

This floor plan has been prepared for the purpose of illustration only in accordance with the latest RICS code of measuring practice and is not to scale. All measurements and areas are approximate and whilst every effort has been made to ensure the accuracy of the plan contained here, no responsibility is taken for any error, omission or misstatement.

- Top Floor Flat
- Amazing horizon views
- Bright south facing aspect
- Double Bedroom
- Reception & Fitted Kitchen
- Bathroom
- Lease - 995 years remaining
- Service Charge £387 per quarter Ground Rent - 0
- EPC Rating E

Energy Efficiency Rating	
	Potential
Very energy efficient - lower running costs	
(92 plus) A	
(81-91) B	
(69-80) C	76
(55-68) D	
(39-54) E	50
(21-38) F	
(1-20) G	
Not energy efficient - higher running costs	
England & Wales	
EU Directive 2002/91/EC	

For Free Mortgage Quote and Best Mortgage Rates, call an Ellisons Mortgage Advisor on 020 8944 9494



Although these particulars are believed to be correct, their accuracy is not guaranteed and they do not form part of any contract.

Celebrating 30 years of successful Sales and Lettings in Merton

