



Eastbury Grove, London, W4 2JT
Guide Price £1,250,000

WHITMAN & CO.

SALES · LETTINGS · COMMERCIAL

- Extended period family home
- Four double beds/two baths
- Close to shops, cafes and restaurants
- West facing garden and roof terrace
- Double reception room and extended kitchen
- No chain

Tenure - Freehold
Local authority - Hounslow
Council tax - Band G

THE PROPERTY

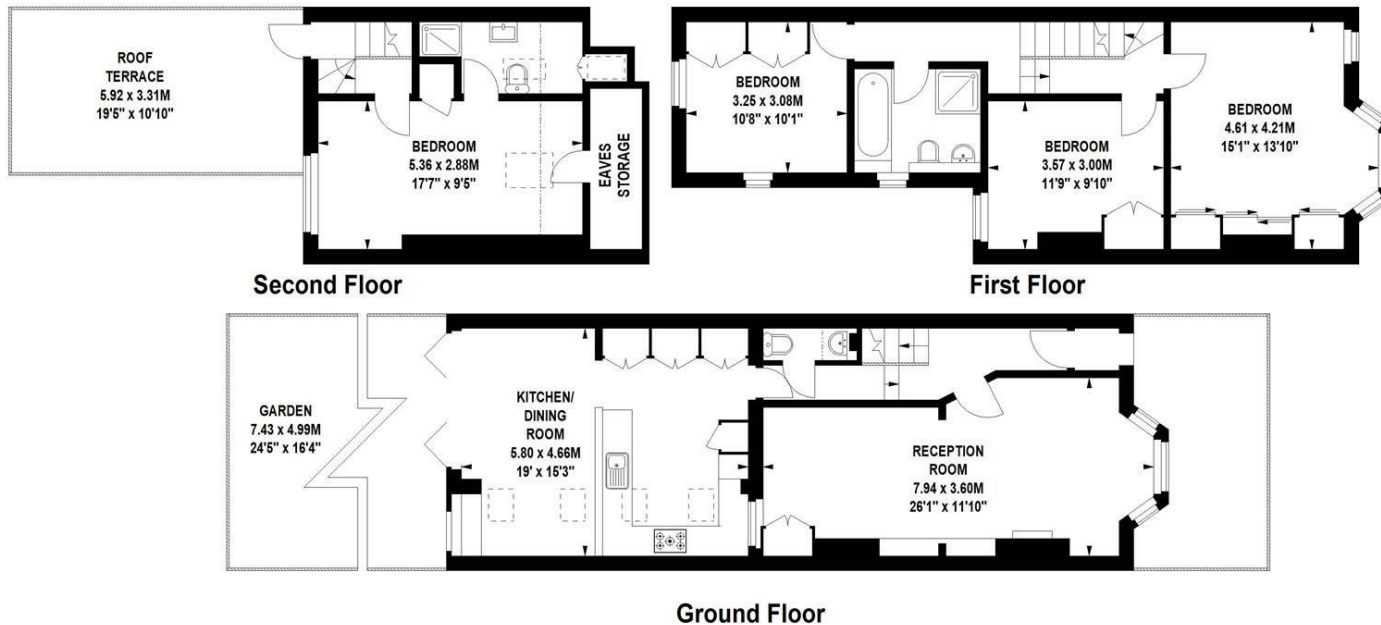
A well presented and extended period family home located on one of the popular alphabet streets within a short walk of Chiswick High Road and The River. The accommodation comprises a spacious double reception room, extended kitchen/breakfast room, west-facing garden, large west-facing roof terrace, four double bedrooms (all with fitted wardrobes), family bathroom with separate shower, ensuite shower room, cloakroom and eaves storage. Located at the favoured north end of the street, the house is within a few minutes' walk of Chiswick High Road's shops, cafes and restaurants, Homefield Park and the historic riverside of Chiswick Mall. Transport links include Turnham Green and Stamford Brook stations, local bus routes and the A4/M4 for routes in and out of London. No chain.

SITUATION



Eastbury Grove, Chiswick, W4

Approximate gross internal area
145.20 sq m / 1563 sq ft
(Including Eaves Storage)
Eaves Storage
3.44 sq m / 37 sq ft



Not to scale, for guidance only and must not be relied upon as a statement of fact.
All measurements and areas are approximate only

5-7 Turnham Green Terrace, Chiswick, London, W4 1RG

Tel 020 8747 8800

E-mail sales@whitmanandco.com

Website www.whitmanandco.com