



Highclere Street SE26
£575,000

0208 702 9777
pedderproperty.com

pedder



In general

- Characterful period home
- Wealth of features
- Through reception with wooden flooring
- Two bedrooms
- Ample storage in loft space
- Family bathroom
- Private west facing garden
- Residential location
- Excellent transport links

In detail

A characterful, Edwardian home, located on a much sought after residential street, close to excellent transport links, amenities and green open spaces.

This warm and inviting home enjoys a wealth of period features throughout, including beautiful fireplaces in every room, high ceilings, coving, plantation shutters and honey stained original floorboards. A treat for those who appreciate charming details.

Beautifully maintained and upgraded, the property now provides a comfortable home ready for an incoming purchaser to immediately enjoy.

Comprising a superb reception with a large square bay window, a recently refurbished kitchen with door leading to a landscaped west facing garden; a tranquil spot for al fresco dining. Upstairs are two bedrooms and an impressive family bathroom.

Highclere Street is a lovely residential road close to the amenities of Sydenham High Street, Mayow Park, and easy access to transport links including Sydenham and Lower Sydenham and good local schools.

EPC: D | Council Tax Band C



Floorplan

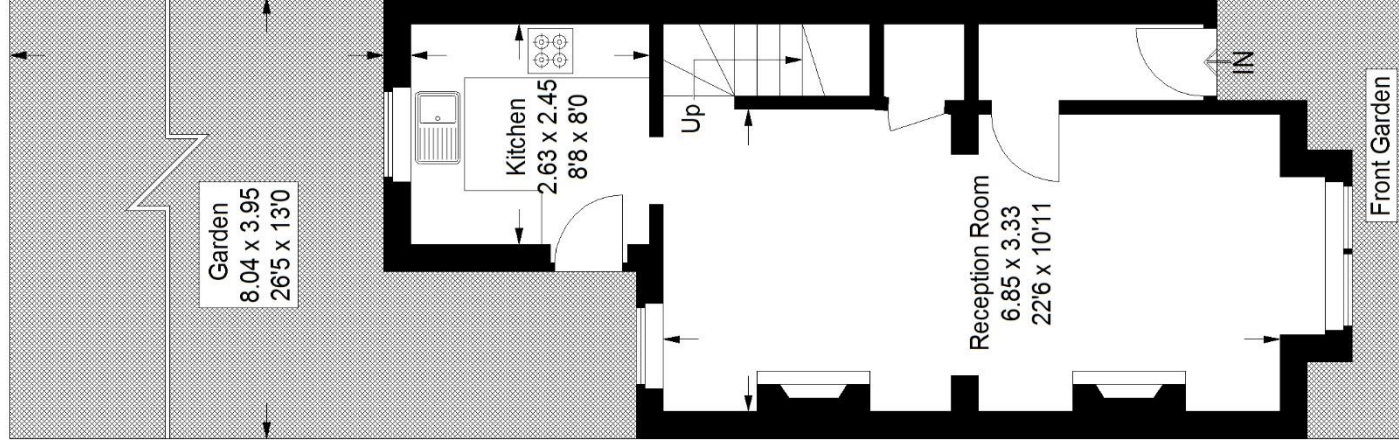
Highclere Street SE26

Approximate Gross Internal Area

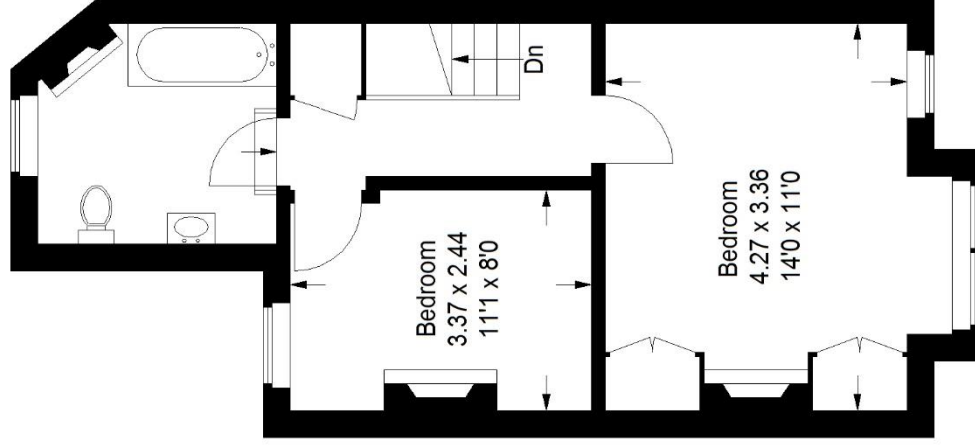
Ground Floor = 36.5 sq m / 393 sq ft

First Floor = 36.9 sq m / 397 sq ft

Total = 73.4 sq m / 790 sq ft



Ground Floor



First Floor

Copyright www.pedderproperty.com © 2022

These plans are for representation purposes only as defined by RICS - Code of Measuring Practice. Not drawn to Scale. Windows and door openings are approximate. Please check all dimensions, shapes and compass bearings before making any decisions reliant upon them.