



Cornwall Grove, London, W4 2LB

Guide Price £1,250,000

WHITMAN & CO.

SALES · LETTINGS · COMMERCIAL

- Over 1700 sq ft
- 24' Double reception room
- Fantastic location with great transport links
- Four double beds/three baths
- Private landscaped garden
- No chain

Tenure - Freehold
Local Authority - Hounslow
Council Tax - Band F

THE PROPERTY

A well presented and much extended four-bedroom Victorian house ideally located in this sought-after residential area offering close proximity to all amenities. This fantastic property comprises of four double bedrooms, three bathrooms, 24' double reception room, 24' fully integrated kitchen/breakfast room, cellar, private landscaped garden, underfloor heating, polished hardwood floors, independent pressurised water system. Ideally located within close proximity of Turnham Green tube station and the extensive bar, restaurant and shopping facilities on Chiswick High Road. No chain.

Cornwall Grove, W4

Approximate gross internal area

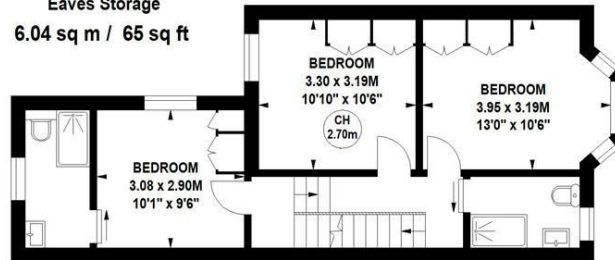
158.95 sq m / 1711 sq ft
(Including Eaves Storage)

Eaves Storage
6.04 sq m / 65 sq ft

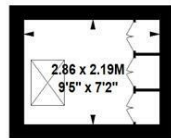
Key :
CH - Ceiling Height



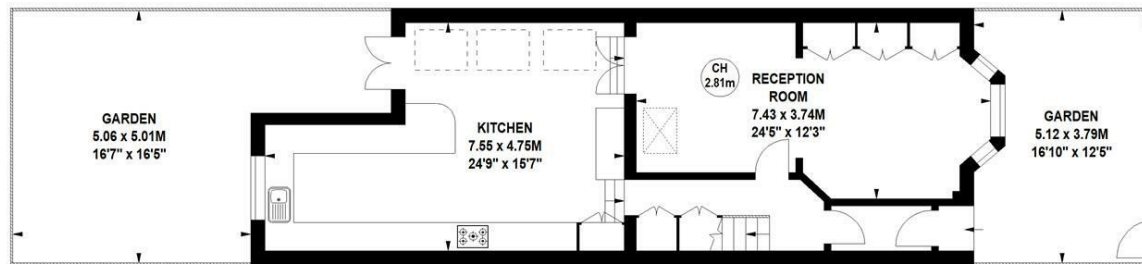
Second Floor



First Floor



Basement



Ground Floor

Not to scale, for guidance only and must not be relied upon as a statement of fact.
All measurements and areas are approximate only

SITUATION



5-7 Turnham Green Terrace, Chiswick, London, W4 1RG
Tel 020 8747 8800

E-mail sales@whitmanandco.com
Website www.whitmanandco.com