



Limekiln Place SE19
£1,100,000

0208 702 9333
pedderproperty.com

pedder



In general

- 2271 sq ft / 211 sq m
- Five bedrooms
- Four bathrooms
- Corner plot
- Secluded woodland development
- Residents parking

In detail

A characterful and generously proportioned five bedroom semi-detached house forming part of a secluded, gated development moments from central Crystal Palace.

This property is one of just a few finished in a gothic style, surrounded by woodland and lush greenery, also benefitting from a larger than average corner plot to the side.

The deceptively spacious accommodation is arranged over four levels and totals 2271 sq ft / 211 sq m- plenty of room for a young or growing family.

Other noteworthy features include a 16ft 6 guest suite with a walk-in wardrobe, shower room and a covered courtyard, a 17ft 4 reception room with two double door to patio, a large kitchen / diner with a utility room, two further en suite bedrooms, and residents parking.

This flexible space is well placed for Crystal Palace rail links, the park and lakes, and a variety of shopping and leisure facilities at the Triangle.

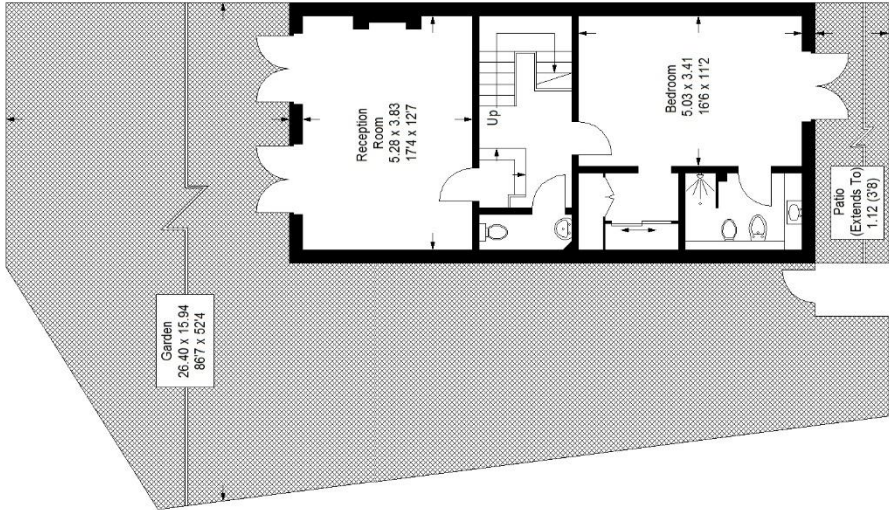
EPC: C



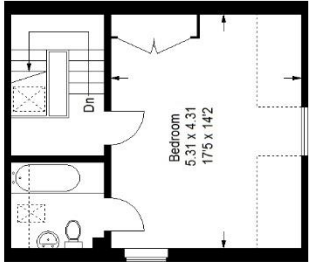
Floorplan

Auckland Road SE19

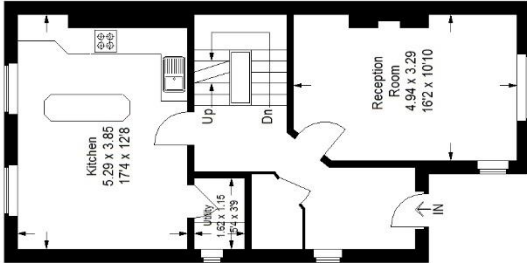
Approximate Gross Internal Area
Lower Ground Floor = 60.9 sq m / 656 sq ft
Ground Floor = 55.5 sq m / 597 sq ft
First Floor = 59.9 sq m / 644 sq ft
Top Floor = 34.7 sq m / 374 sq ft
Total = 211.0 sq m / 2271 sq ft



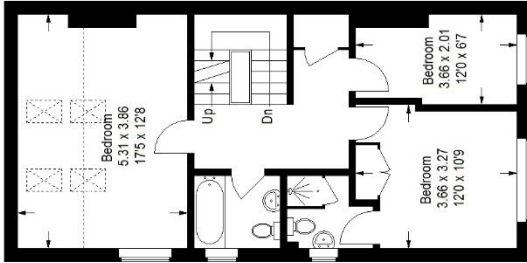
Reduced headroom
below 1.5m / 50



Top Floor



Ground Floor



First Floor

Lower Ground Floor

This plan is for layout guidance only. Not drawn to scale unless stated. Windows and door openings are approximate. Whilst every care is taken in the preparation of this plan, please check all dimensions, shapes and compass bearings before making any decisions reliant upon them. (ID727484)

Score	Energy rating	Current	Potential
92+	A		
81-91	B		81 B
69-80	C	72 C	
55-68	D		
39-54	E		
21-38	F		
1-20	G		

Pedder Property Ltd trading as Pedder for themselves and for the vendor/landlord of this property whose agents they are, give notice that (1) these particulars do not constitute any part of an offer or contract, (2) all statements contained within these particulars are made without responsibility on the part of Pedder or the vendor/landlord, (3) whilst made in good faith, none of the statements contained within these particulars are to be relied upon as a statement of representation or fact, (4) any intending purchaser/tenant must satisfy him/herself by inspection or otherwise as to the correctness of each of the statements contained within these particulars, (5) the vendor/landlord does not make or give either Pedder or any person in their employment any authority to make or give representation or warranty whatsoever in relation to this property.