

## **Aldercroft Close, Ipswich, Suffolk, IP1 6PN**

**Asking Price: £300,000**

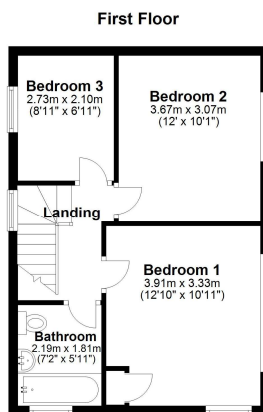
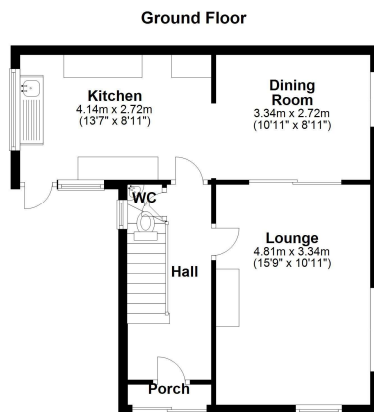


- No Onward Chain
- Semi-Detached House
- Three Bedrooms
- Two Separate Reception Rooms
- Lovely Corner Plot
- Garage & Parking to Rear

This extended three bedroom semi-detached house sits on a lovely corner plot in the much sought after Crofts area of Ipswich. This 1960s build is being sold with no onward chain and comes with garage and parking to the rear. Accommodation comprises front porch, entrance hall, ground floor cloakroom, lounge, dining room, kitchen, first floor landing, three bedrooms, and family bathroom.



The county town of Ipswich offers a range of local amenities including schools, university, shops, doctors, dental surgeries, hospital, two theatres, parks including the popular Orwell Country Park, recreational facilities, and mainline railway station providing direct links to London Liverpool Street Station. The town has also undergone an extensive rebuilding and a gentrification programme principally around the vibrant waterfront which now boasts some lovely bars and restaurants.



#### Disclaimer

Every attempt has been made to ensure accuracy, however these property particulars are approximate and for illustrative purposes only. They have been prepared in good faith and they are not intended to constitute part of an offer of contract. We have not carried out a structural survey and the services, appliances and specific fittings have not been tested. All photographs, measurements, floor plans and distances referred to are given as a guide only and should not be relied upon for the purchase of any fixture or fittings. Lease details, service charges and ground rent (where applicable) are given as a guide only and should be checked prior to agreeing a sale.