

# Greyhound Road

Hammersmith, London, W6







## Greyhound Road

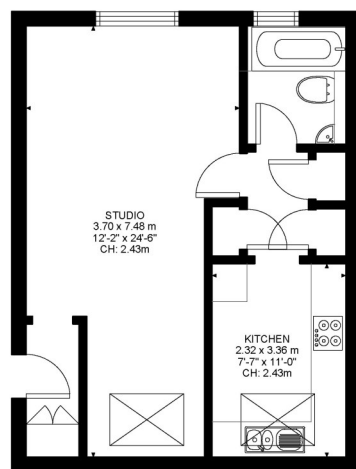
Hammersmith, London, W6

Price Guide: £365,000

A stunning studio/one bedroom apartment measuring 449 sq. ft located on the second floor of this popular and much sought after development. **THE MANAGEMENT COMPANY/FREEHOLDER IS WILLING TO ALLOW STUDIO FLATS TO BE CONVERTED TO ONE BEDROOM FLATS. (This is subject to acceptable plans and full compliance with Building Regulations).**

The flat which has been recently refurbished benefits from a stylish 11'0 x 7'7 eat in kitchen breakfast room with fully integrated appliances and space for dining table, a lovely three piece bathroom suite with overhead chrome power shower, a fabulous 24'6 x 12'2 studio room with wooden flooring and an extremely clever recessed bedroom area and excellent storage throughout.

The flat is within a 10 minute walk to both Barons Court and West Kensington underground stations and close to a variety of local amenities including Waitrose, Sainsburys, Café Nero and Pret. Length of lease 970 years.



Second Floor  
449 ft²

Greyhound Road, W6  
Approximate Gross Internal Area  
41.69 SQ.M / 449 SQ.FT

KEY: CH = Ceiling Height  
[Restricted Head Height]

Illustration for identification purposes only. Not to scale.  
Floor Plan Drawn According To RICS Guidelines.

Stunning studio/one bedroom apartment in much sought after development

Recently refurbished | Fabulous studio room | Eat-in kitchen with space for dining table

Extremely clever recessed bedroom | Excellent storage throughout | Long Lease 970 years

Close to transport & amenities | 449 Sq. Ft. (41.69 Sq. M.) Leasehold

All viewings by appointment  
through our **Hammersmith Office:**

T: 020 7385 7000  
E: [hammersmith@lawsonrutter.com](mailto:hammersmith@lawsonrutter.com)

192Fulham Palace Road, London  
W6 9PA

In accordance with the Property Misdescription Act 1991, we wish to emphasise that the information given in these particulars is intended to help you decide whether you wish to view this property. Whilst every care is taken to ensure the accuracy of these particulars please note that all measurements are approximate and we are, for the accuracy of other information, reliant on what the seller has provided. We strongly recommend that you rely on your own inspections and those of your advisors to establish the details of any aspects which are of particular importance. Please note that we have not undertaken any survey of the property or the appliances within it and the buyer must rely on their own investigations prior to exchange of contracts.

