

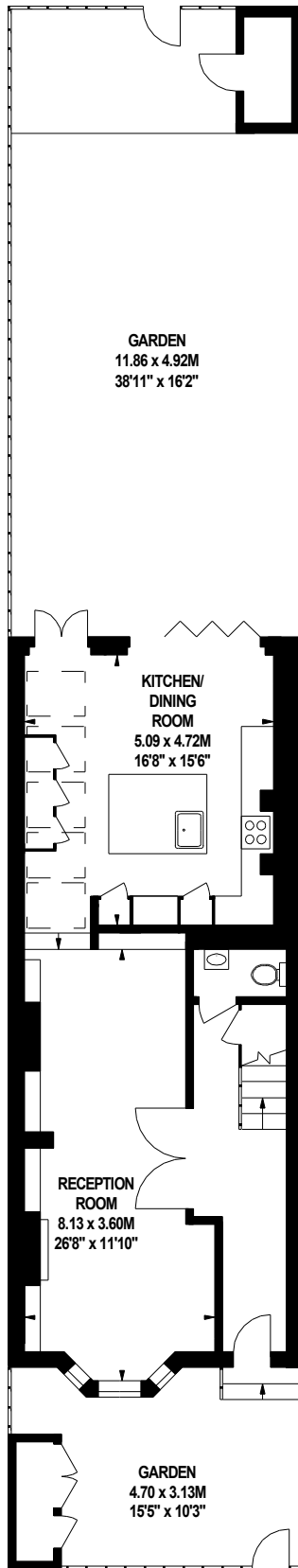
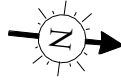
Beaumont Road, W4

Approximate gross internal area

211.90 sq m / 2281 sq ft
(Including Eaves Storage)

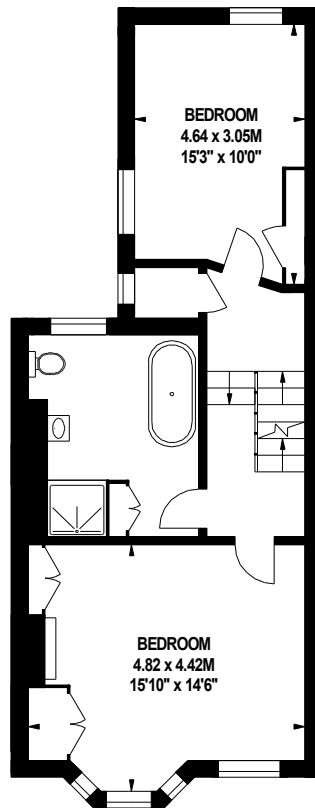
Eaves Storage

5.39 sq m / 58 sq ft



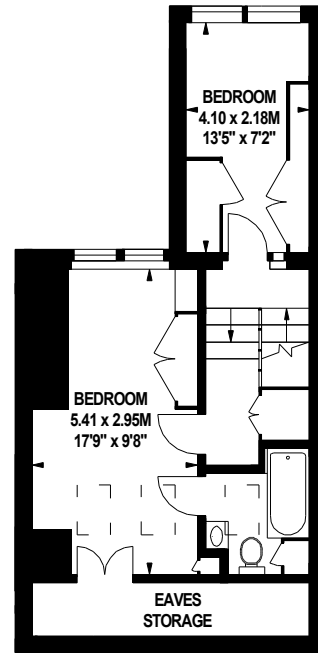
687 sq ft

Ground Floor



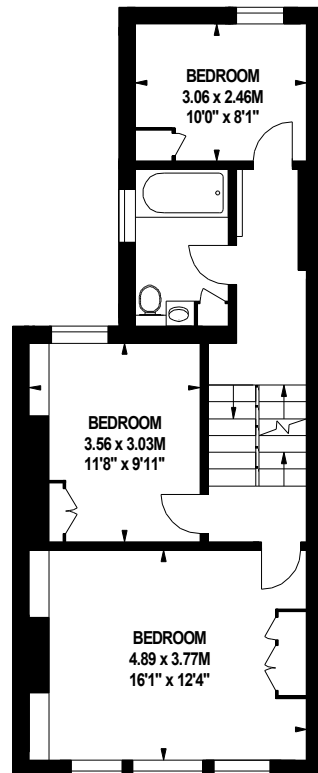
583 sq ft

First Floor



380 sq ft

Third Floor



573 sq ft

Second Floor

The floor plan is not to scale and measurements and areas shown are approximate and therefore should be used for illustrative purposes only. The plan has been prepared in accordance with the RICS code of Measuring Practice and whilst we have confidence in the information produced, it must not be relied on. If there is any aspect of particular importance, you should carry out or commission your own inspection of the property.
Copyright of FeaturePRO.