



Rainsborough Avenue, Deptford

Asking Price £350,000 Leasehold

OLIVER *OJ* JACQUES
EST. 1986



Rainsborough Avenue, Deptford

A newly refurbished three bedroom apartment on the top floor of Bence House, just an 11 minute stroll from Surrey Quays station. The property is positioned so all windows face south west, filling the space with light all afternoon, whilst a balcony running the full length of the apartment allows you to enjoy the outside space. Sandwiched between the new developments of Greenland Place and Deptford Landings with their many amenities strung along the scenic Grand Canal Avenue, the property offers an affordable opportunity to advantage from the large scale gentrification locally.

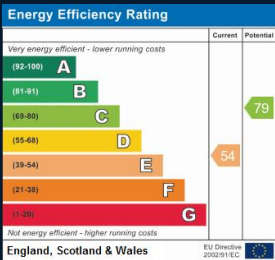
- Newly Refurbished Apartment
- Top Floor Position
- Two Double Bedrooms
- Serviced Lifts
- South West Facing Balcony
- 11 min Surrey Quays Station

South East London
020 7231 5050

Email southeast@o-j.co.uk

229-231 Lower Road, London, SE16 2LW

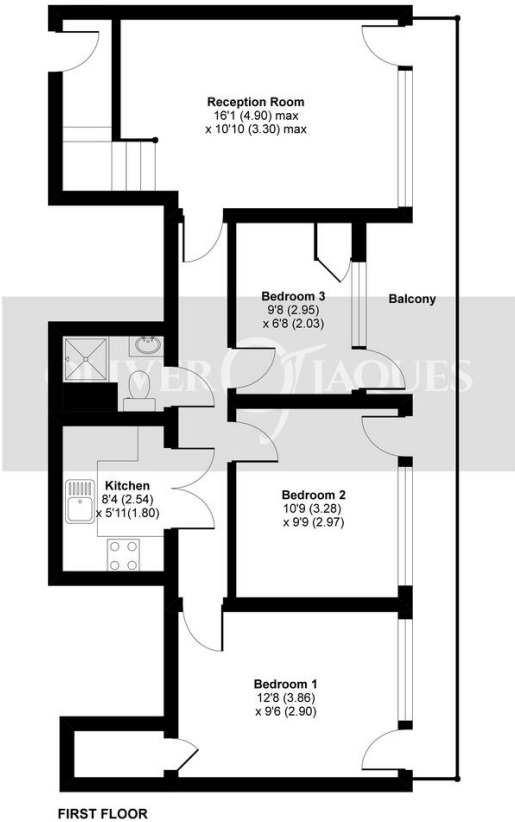
Every care has been taken with the preparation of this brochure but it is for general guidance only and complete accuracy cannot be guaranteed. If there is any point, which is of importance professional verification should be sought. This brochure does not constitute a contract or part of a contract. We are not qualified to verify tenure of property. Prospective purchasers should seek clarification from their solicitor or verify the tenure of this property for themselves by visiting www.gov.uk/government/organisations/land-registry. The mention of any appliances, fixtures or fittings does not imply they are in full working order. Photographs are reproduced for general information and it cannot be inferred that any item shown is included in the sale. All dimensions are approximate. Walking times are taken from Google Maps and measured from the centre of the postcode, which may differ from the individual property. We routinely refer clients to Chancery Mortgage Services Ltd. It is your decision whether you choose to deal with Chancery Mortgage Services Ltd. In making that decision, you should know that we receive an annual payment benefits from Chancery Mortgage Services Ltd, equating to approximately £220 per referral



web www.o-j.co.uk

Bence House, Rainsborough Avenue, London, SE8

Approximate Area = 691 sq ft / 64.2 sq m
For identification only - Not to scale



Certified Property Measurement
Floor plan produced in accordance with RICS Property Measurement Standards incorporating International Property Measurement Standards (IPMS2 Residential). © richcom 2021. Produced for Oliver Jacques - REF: 695789

- **Tenure:** Leasehold
- **Ground Rent:** £10 pa
 - Fixed
- **Service Charge:** £1,100 pa
- **Lease Expires:** 2124
- **Shared Ownership:** No
- **Council Tax Band:** Lewisham B
 - £1,356.15