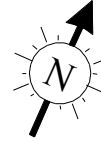
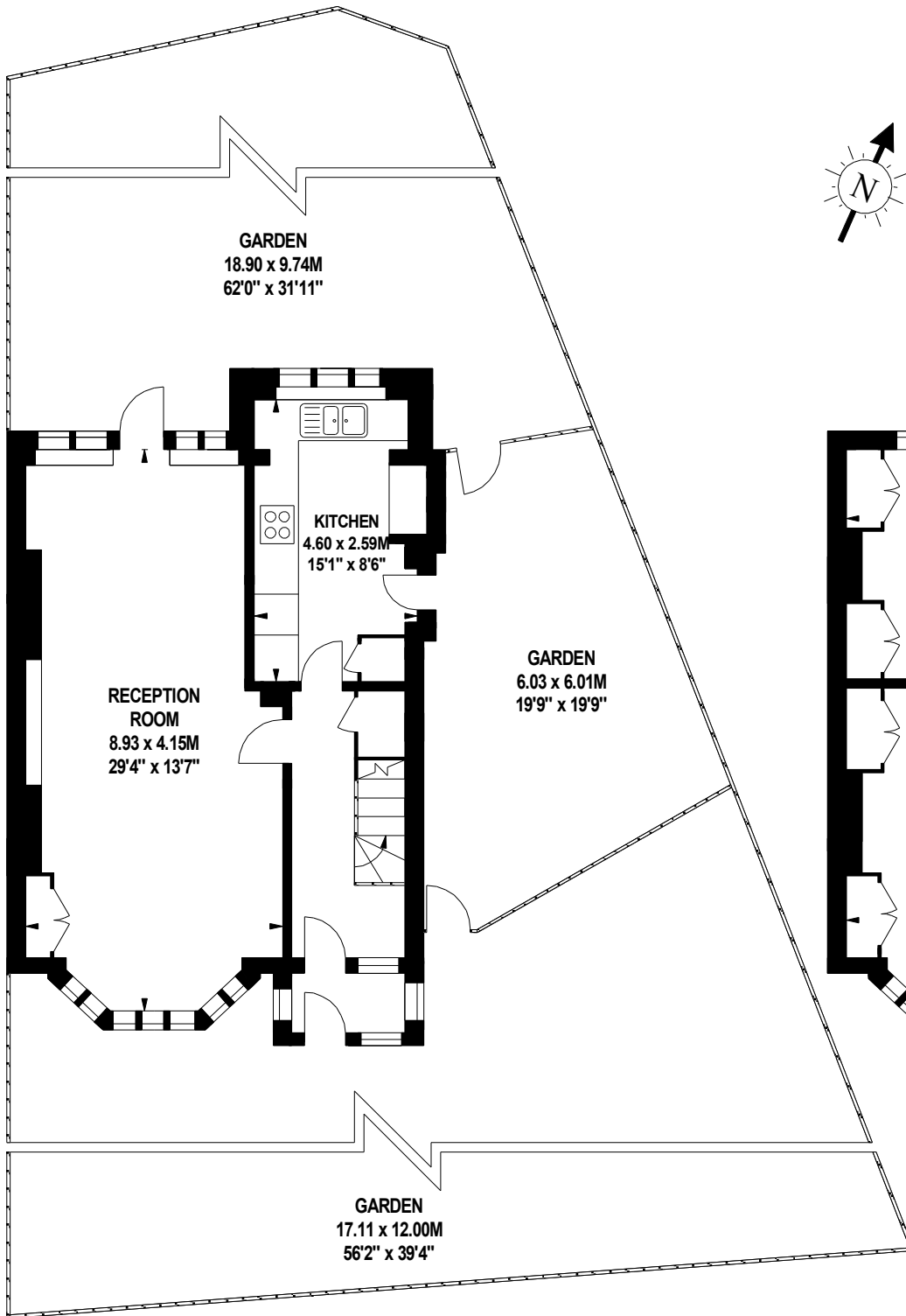


Park Road, W4

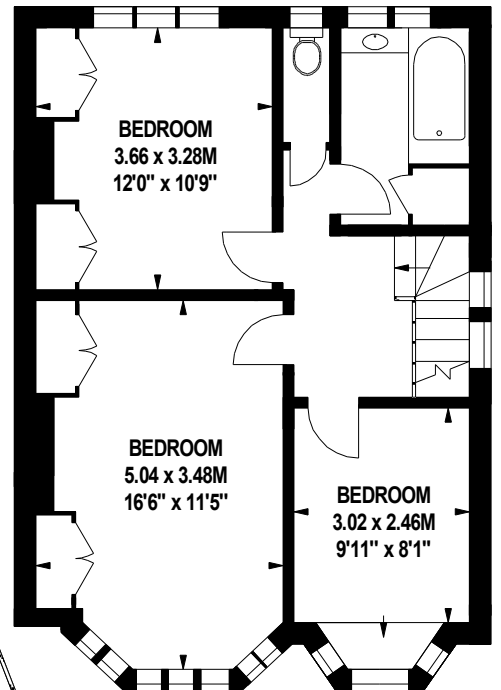
Approximate gross internal area

105.35 sq m / 1134 sq ft



Ground Floor

591 sq ft



First Floor

543 sq ft

The floor plan is not to scale and measurements and areas shown are approximate and therefore should be used for illustrative purposes only. The plan has been prepared in accordance with the RICS code of Measuring Practice and whilst we have confidence in the information produced, it must be not be relied on. If there is any aspect of particular importance, you should carry out or commission your own inspection of the property.
Copyright of FeaturePRO.